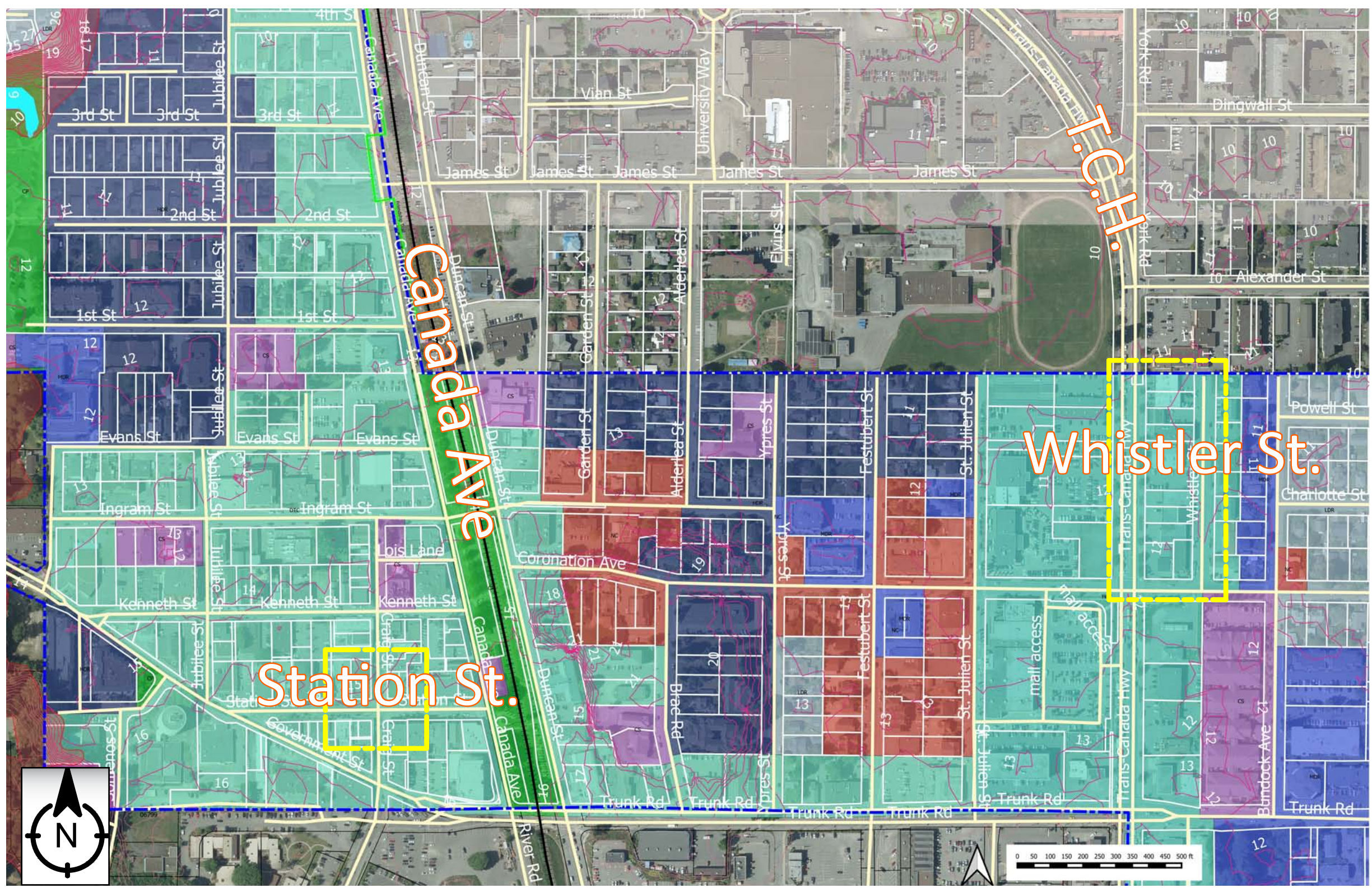


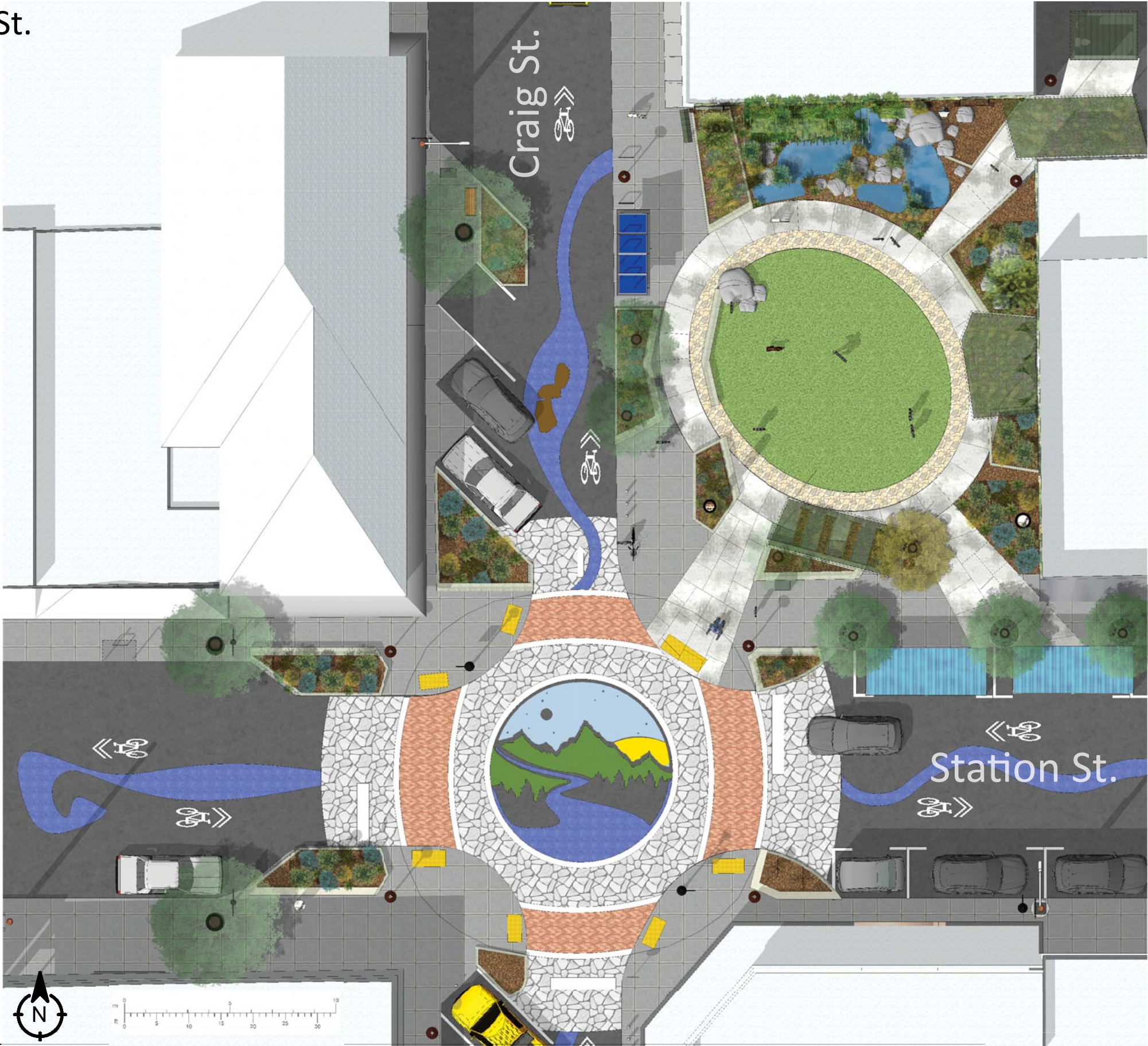


Perspective View of Station St.

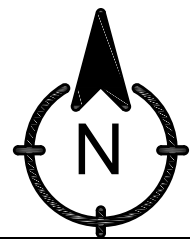
Duncan, BC Zoning Map- Areas of Focus



Plan View of Station St.



- Retractable Movie Screen w/ Trellis Above
- Info Sign or Community Bulletin Board
- Street Lighting
- Bike Staples
- Covered Bicycle Parking & Solar Powered E-Charging Station
- 20" High Walls Serve As Seating
- Cherries Ice Cream Parlor
- Rainwater Swale w/ Street Trees
- Existing Moveable Bollards
- Existing Totem Relocated
- Willow & Orchid
- Brick Paved Crosswalk
- Existing Post & Town Banner
- Mural On Pavement



Plan View of Station St.



- Trellises w/ Flowering Vines
- Public Washrooms (Self-Cleaning)
- Nature Play Area w/ Water Feature, Boulders for Seating & Climbing
- Green Roof Over Pedestrian Passage w/ Ferns
- Street Lighting
- Concrete Paths, Minimum 5' Wide with Radial Seams
- Covered Platform w/ Movable Tables & Chairs; Green Roof Above; Can Be Used As Stage
- Flagstone Path, 3'-0" Wide
- Waste/Recycling Receptacle
- Covered Picnic Area on Grade; Green Roof w/ Seedum Lawn
- Raised Planter w/ Pollinator Plants; 20" High Walls Serve As Seats
- Food Pods (2)

Elevations

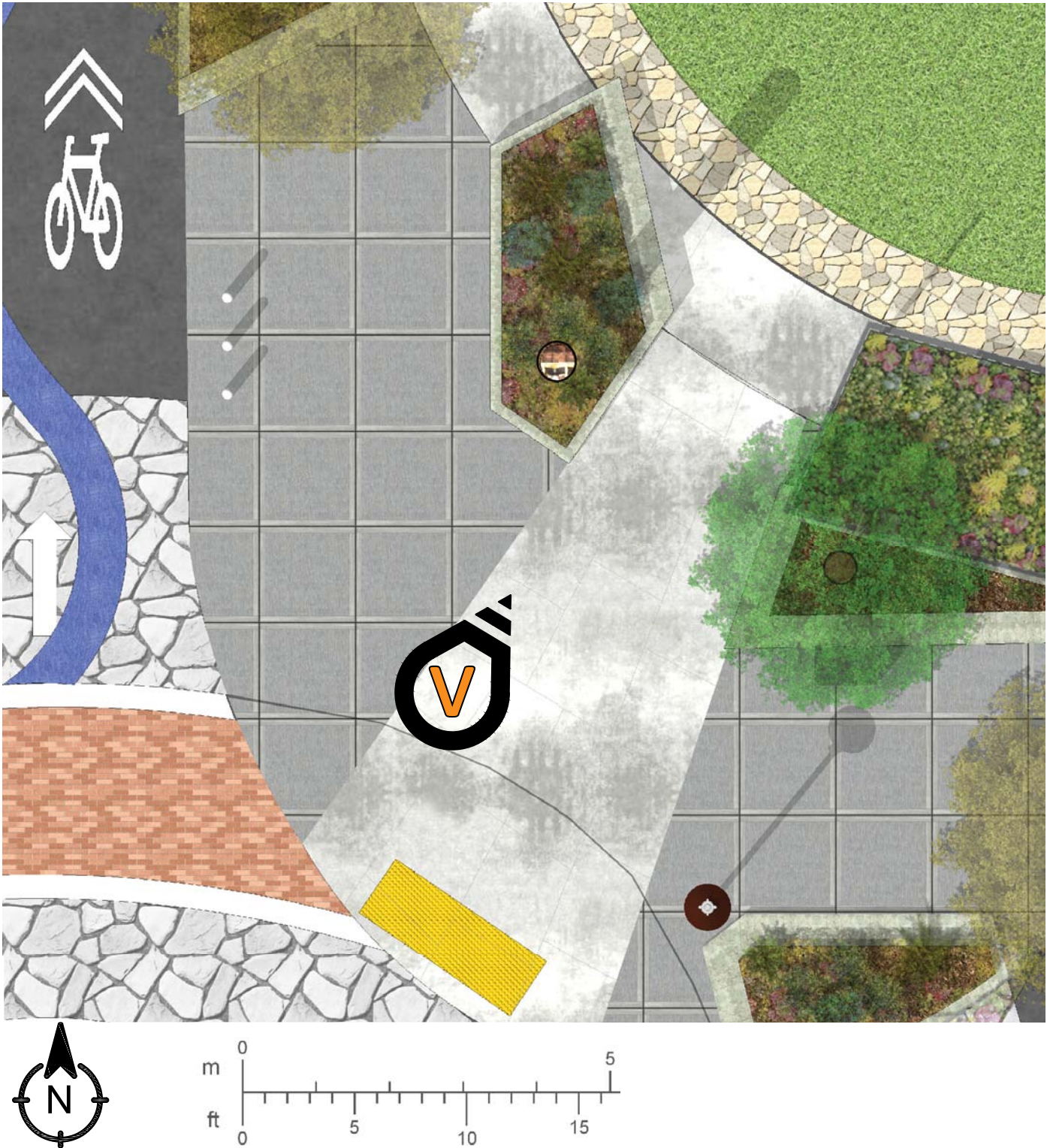


Station St.- Looking North



Station St.- Looking East

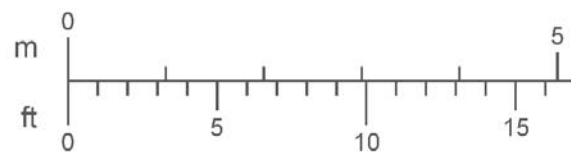




Floor Plan Detail- Station St. View 1



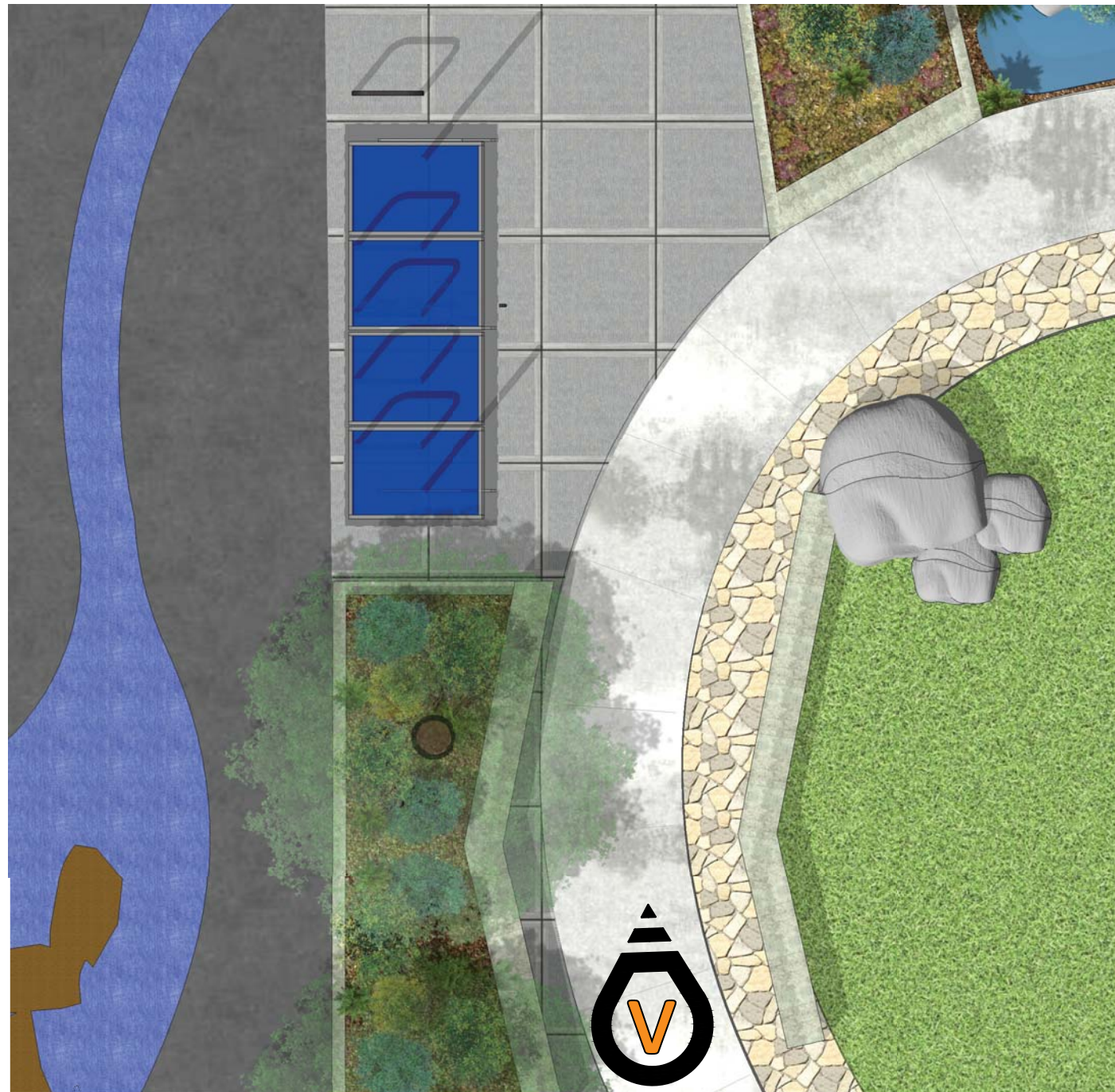
Perspective View 1 of Station St.



Floor Plan Detail- Station St. View 2



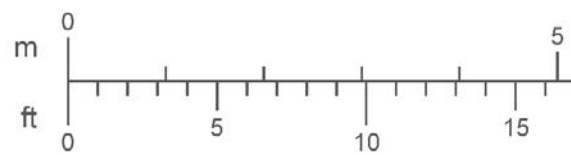
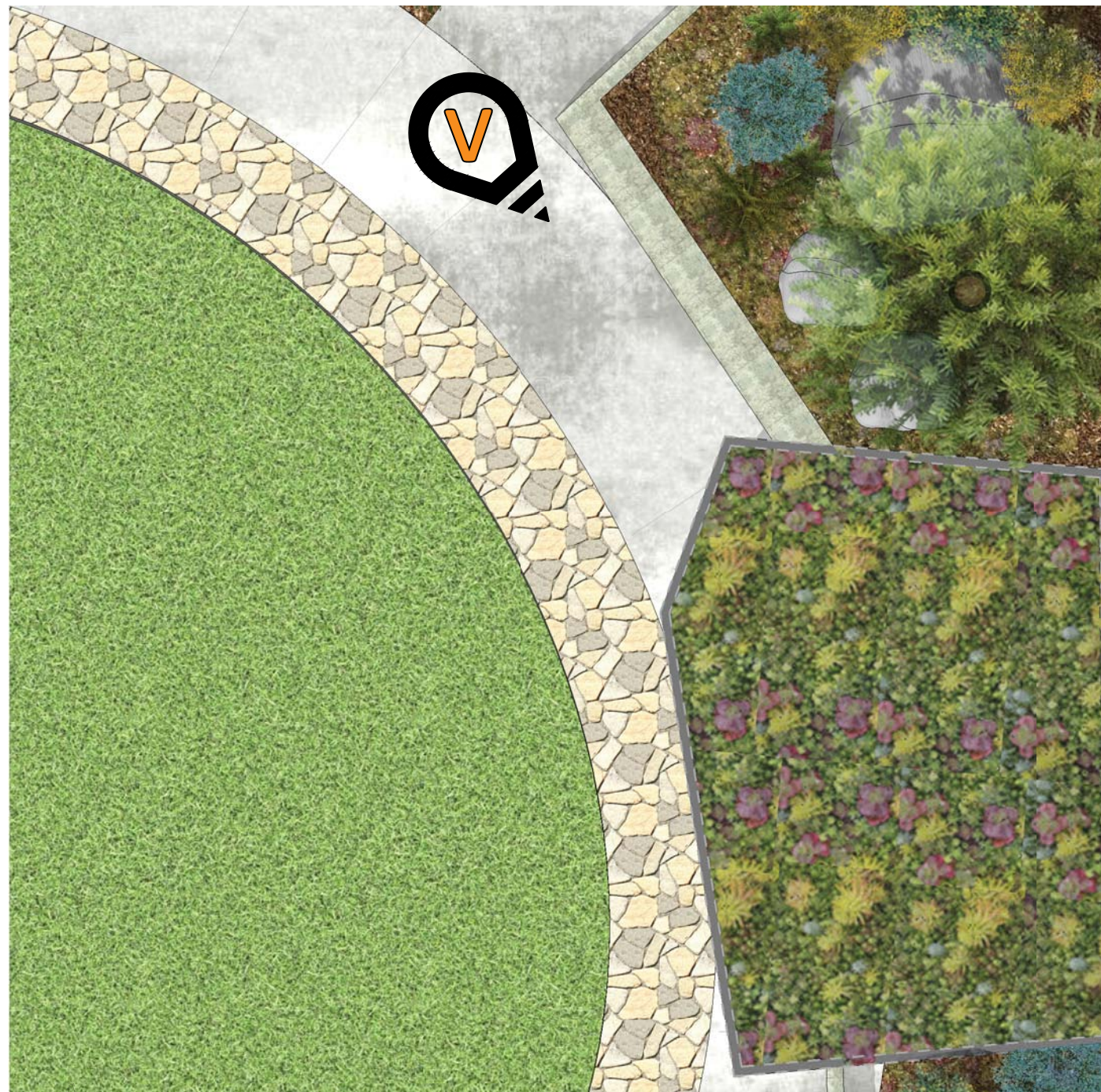
Perspective View 2 of Station St.



Floor Plan Detail- Station St. View 3



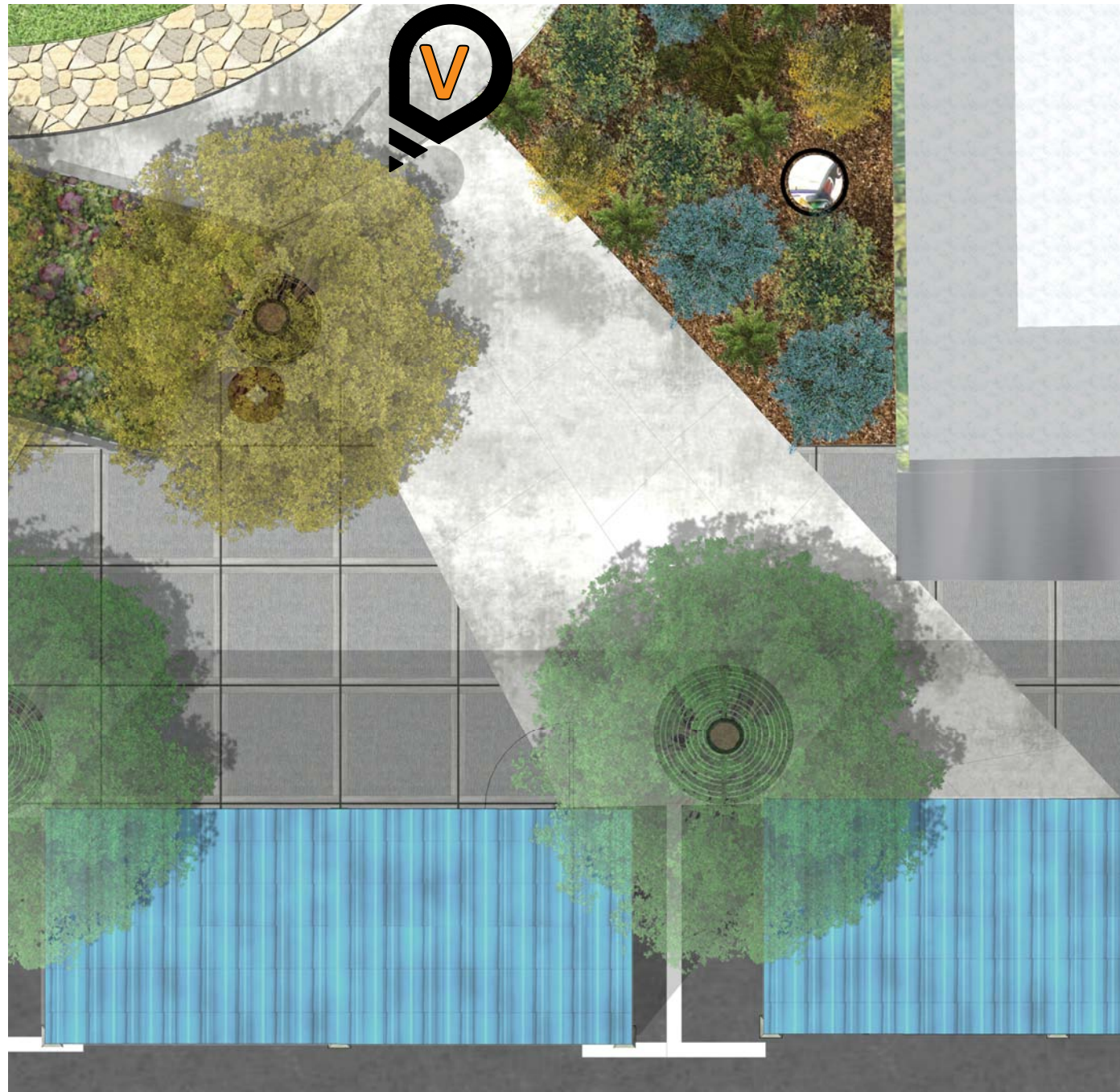
Perspective View 3 of Station St.





Floor Plan Detail- Station St. View 4



Perspective View 4 of Station St.



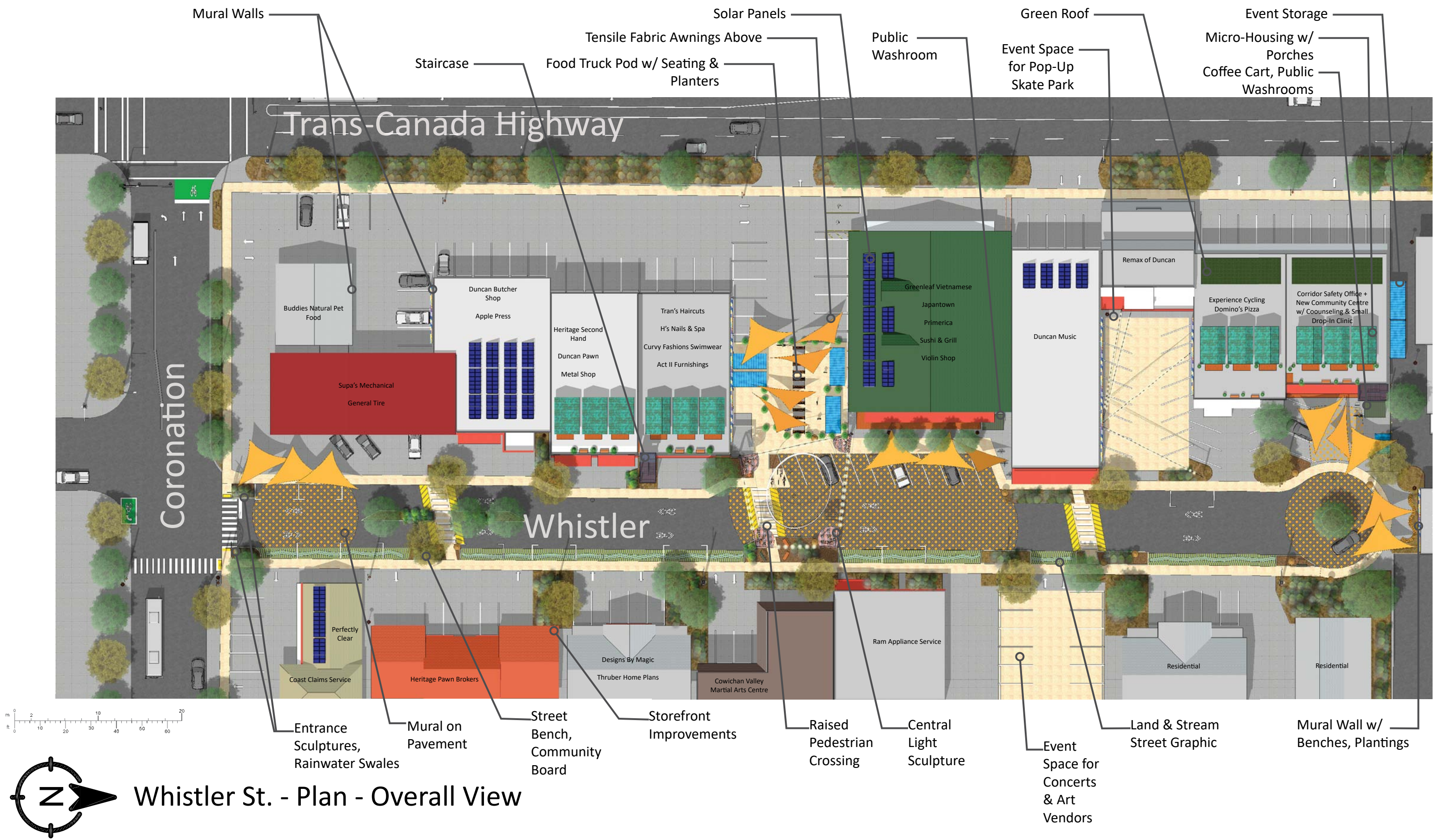


 Floor Plan Detail- Station St. View 5



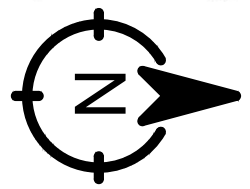
Perspective View 5 of Station St.

Birdseye View of Station St.

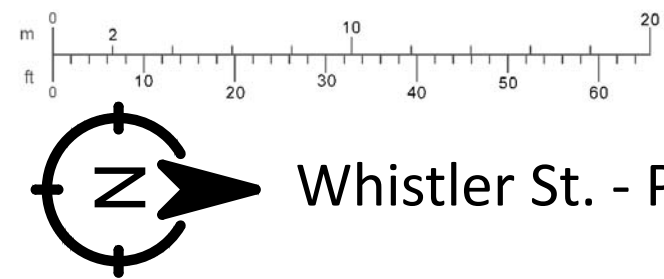




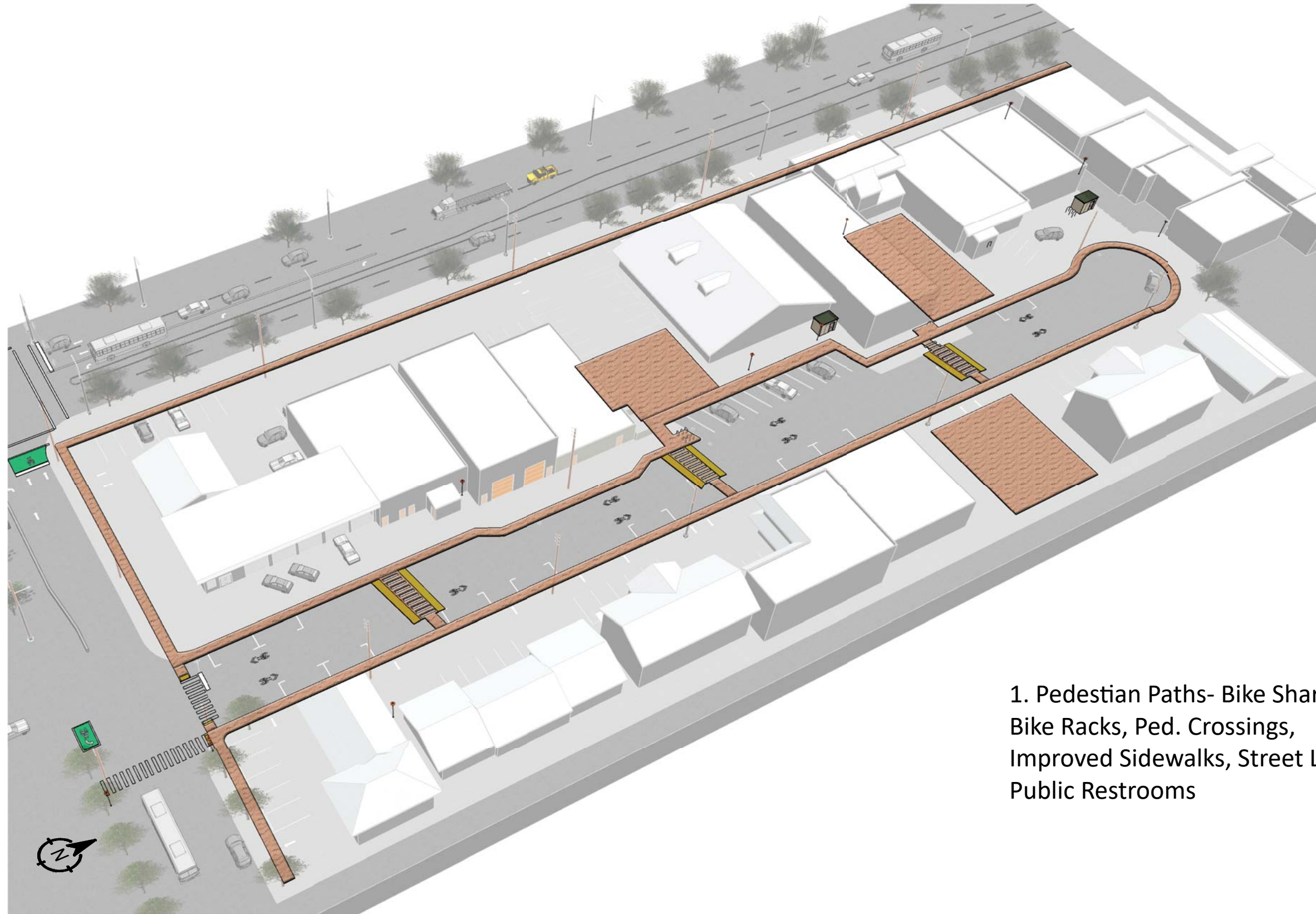
Whistler St. - Plan - Overall View



Whistler St. - Plan - South Half



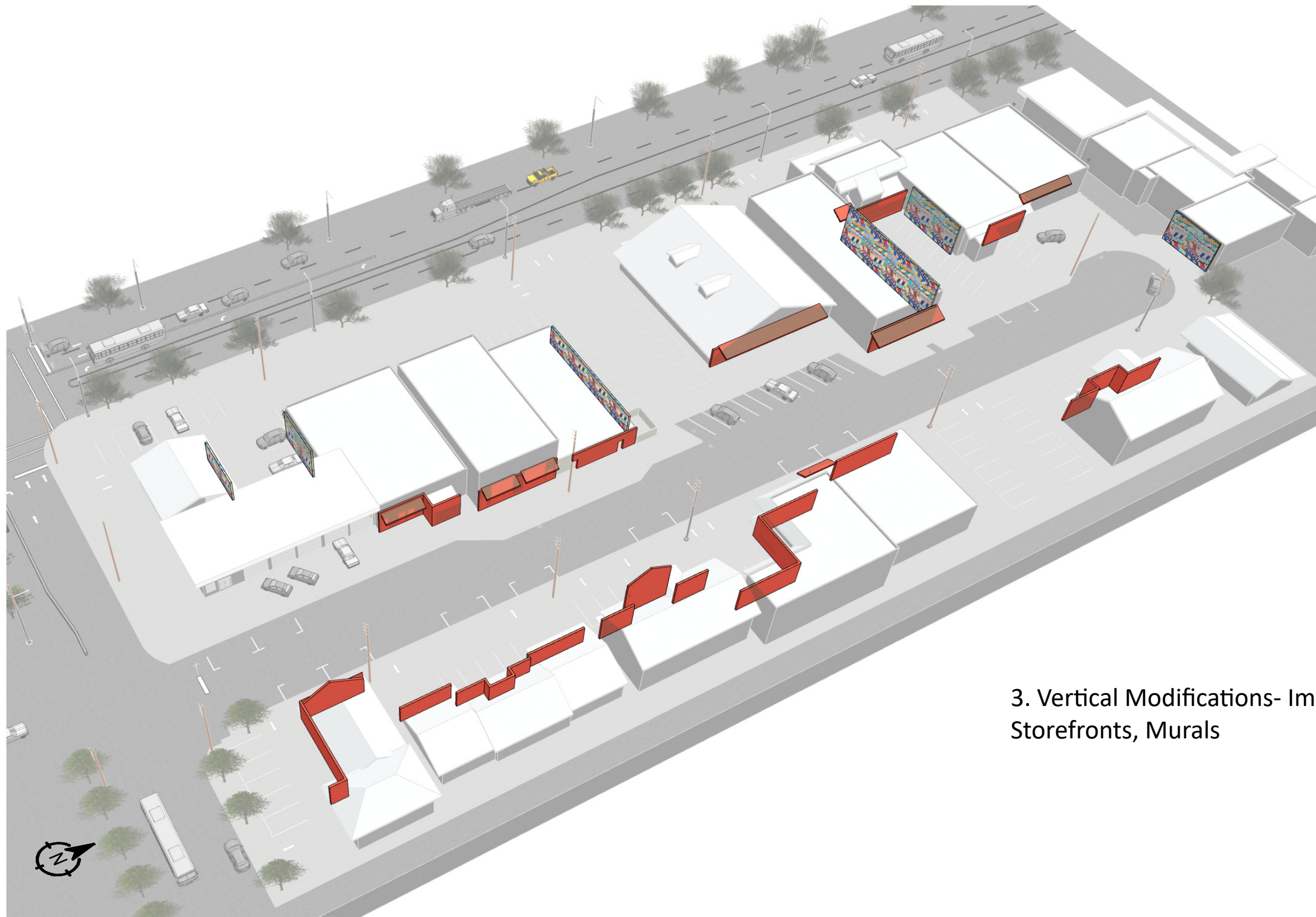
Whistler St. - Plan- North Half



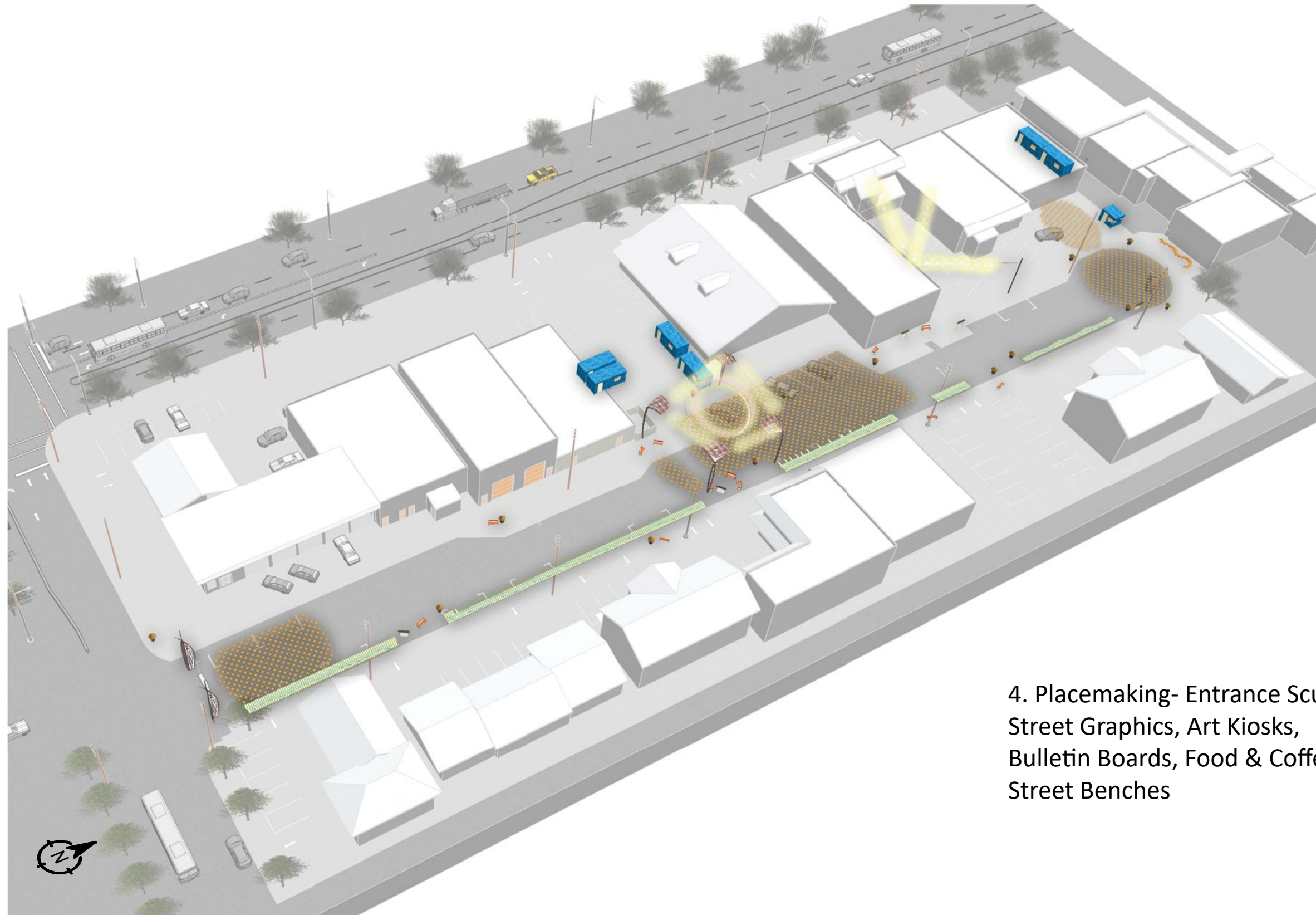
1. Pedestian Paths- Bike Sharrows,
Bike Racks, Ped. Crossings,
Improved Sidewalks, Street Lighting,
Public Restrooms



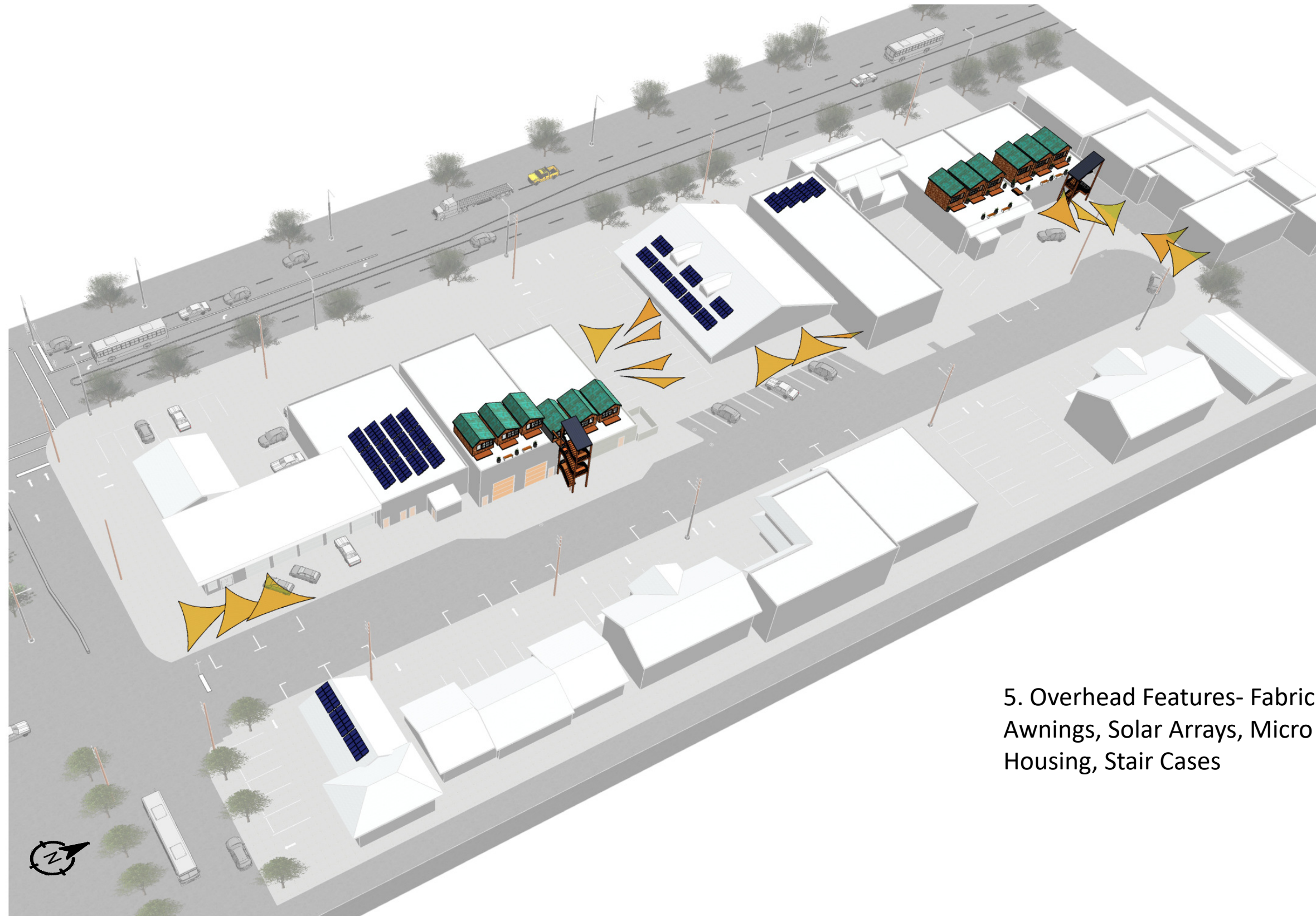
2. Vegetation- Rainwater Gardens,
Swales, Plantings, Street Trees,
Container Plantings, Green Roofs



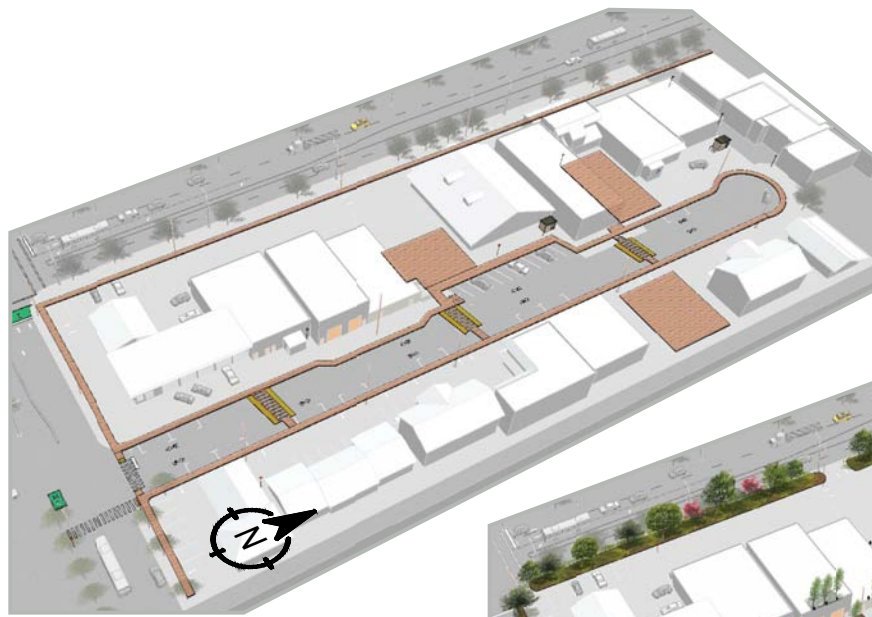
3. Vertical Modifications- Improved Storefronts, Murals



4. Placemaking- Entrance Sculptures,
Street Graphics, Art Kiosks,
Bulletin Boards, Food & Coffee Pods,
Street Benches



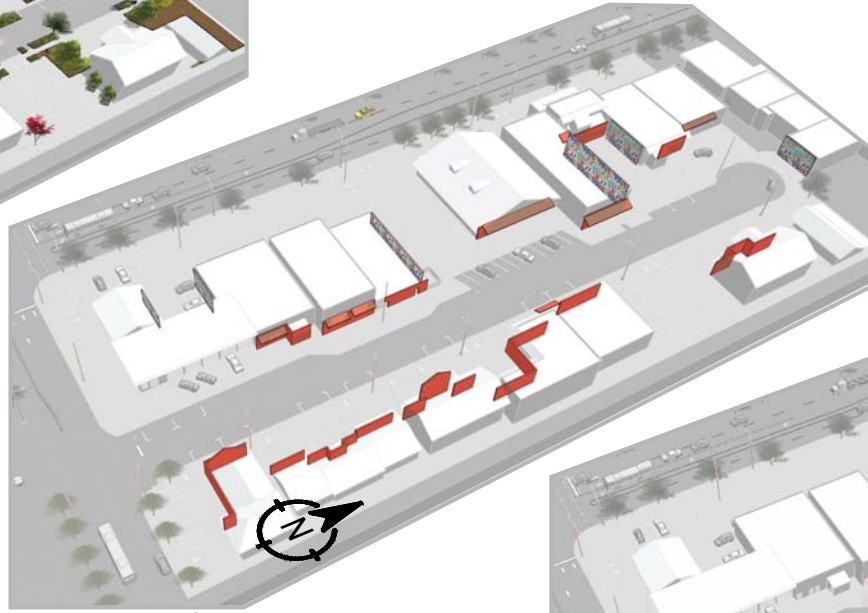
5. Overhead Features- Fabric Awnings, Solar Arrays, Micro Housing, Stair Cases



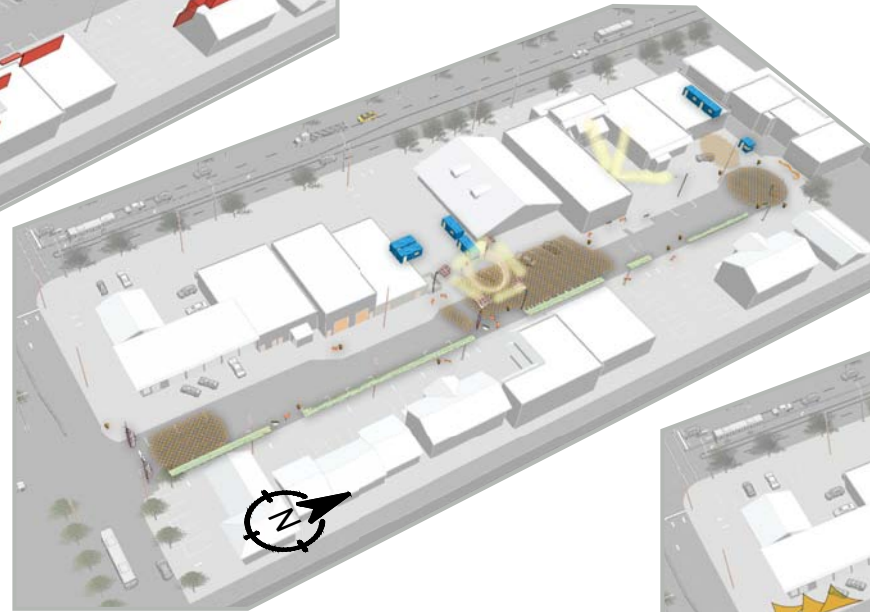
1. Pedestian Paths-
Bike Sharrows, Ped.
Crossings, Improved
Sidewalks, Public
Washrooms, Street
Lighting, Bike Racks



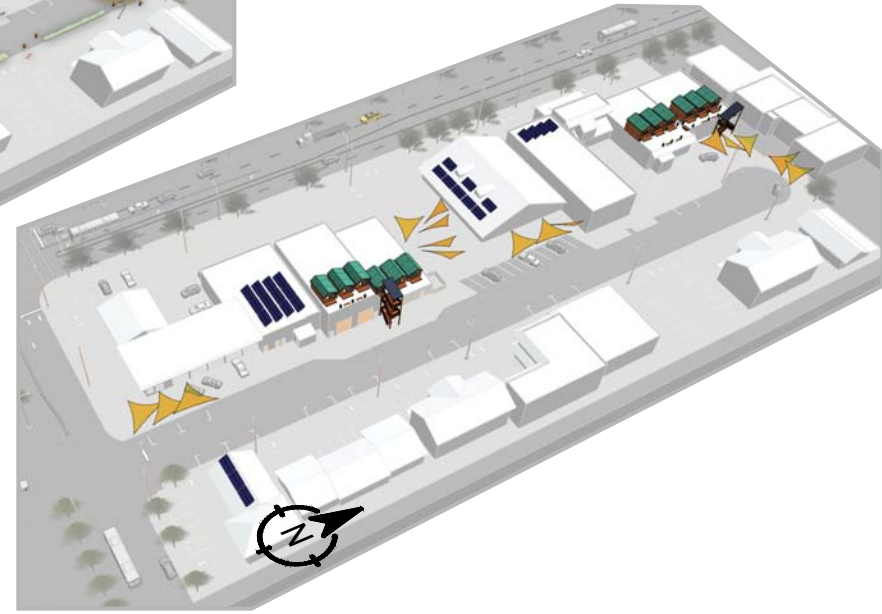
2. Vegetation-
Rainwater Gardens,
Swales, Street Trees,
Container Plantings,
Green Roofs



3. Vertical
Modifications-
Improved Storefronts,
Murals



4. Placemaking-
Entrance Sculptures,
Street Graphics, Art
Kiosks,
Bulletin Boards, Food
Pods, Benches

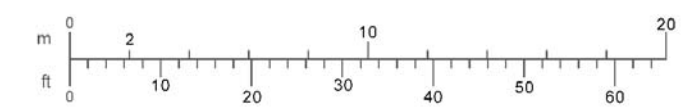


5. Overhead Features-
Fabric Awnings, Solar
Arrays, Micro Housing,
Stair Cases

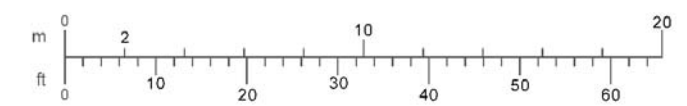
Whistler St. - Exploded Axonometric Drawings

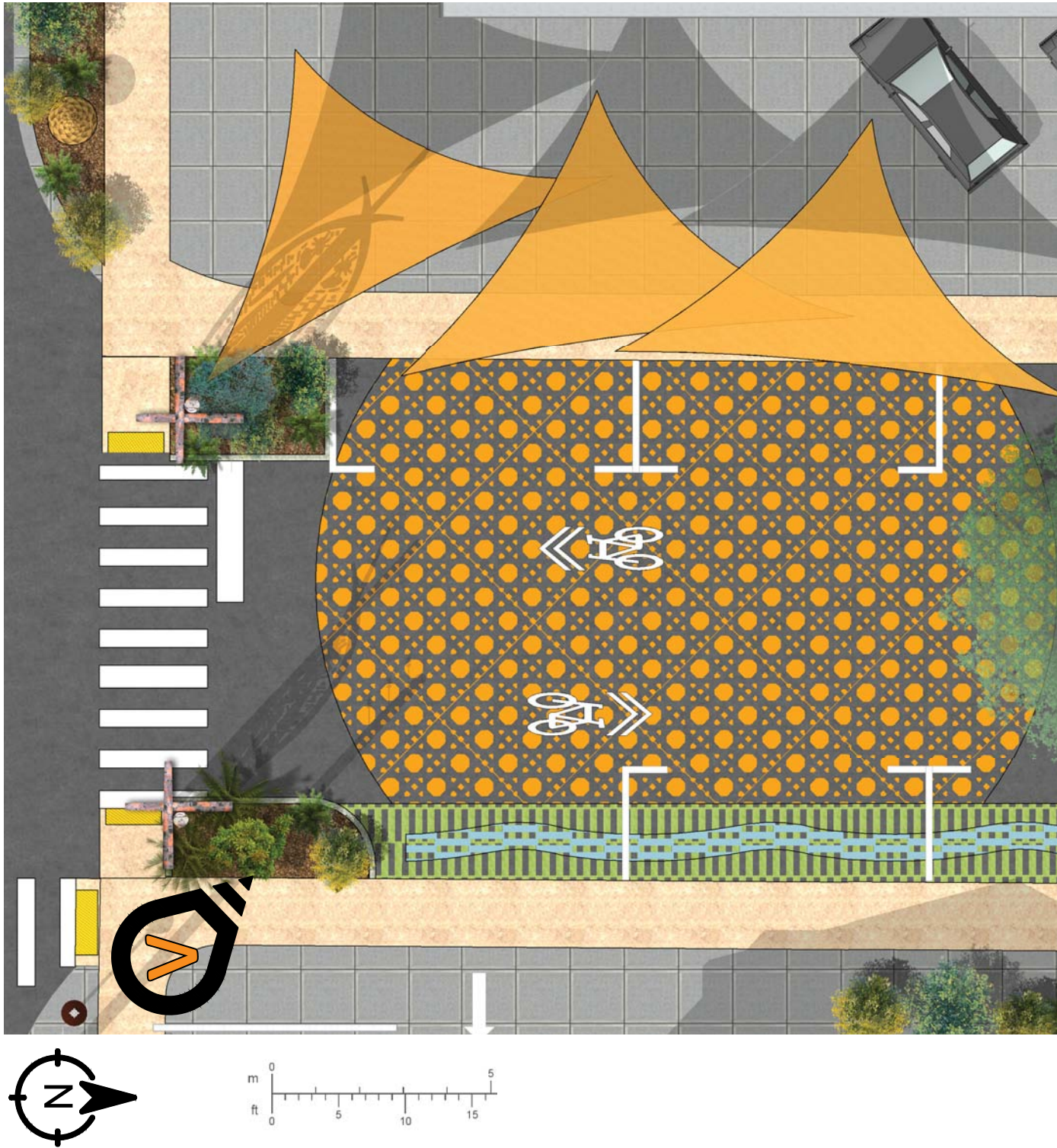


Whistler St. - Looking West at Coronation Intersection



Whistler St. - Looking West

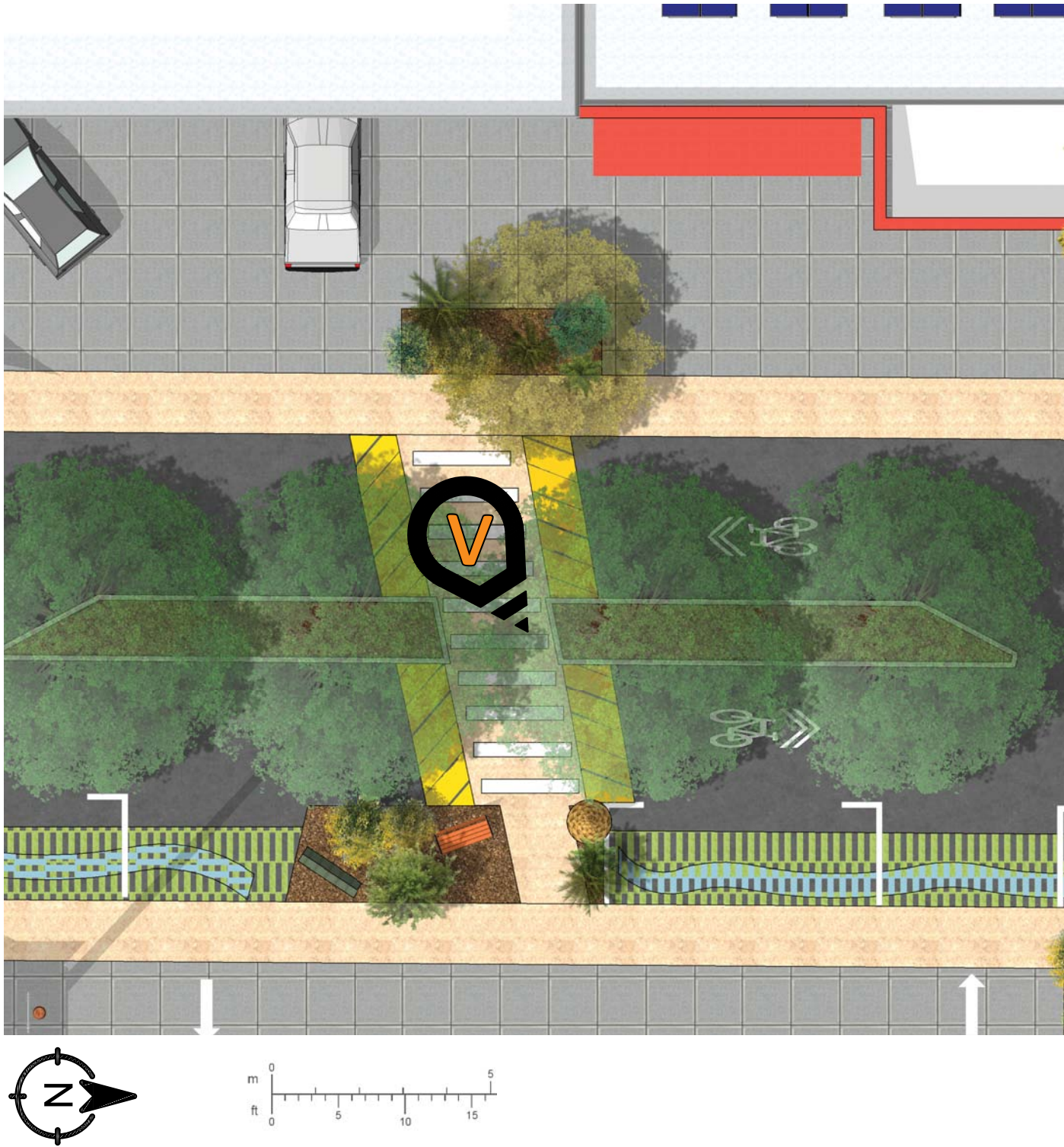




Plan Detail- Whistler St. View 1



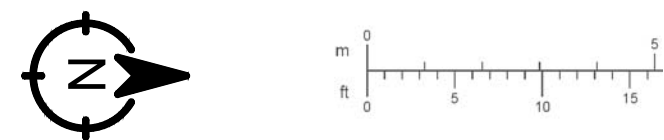
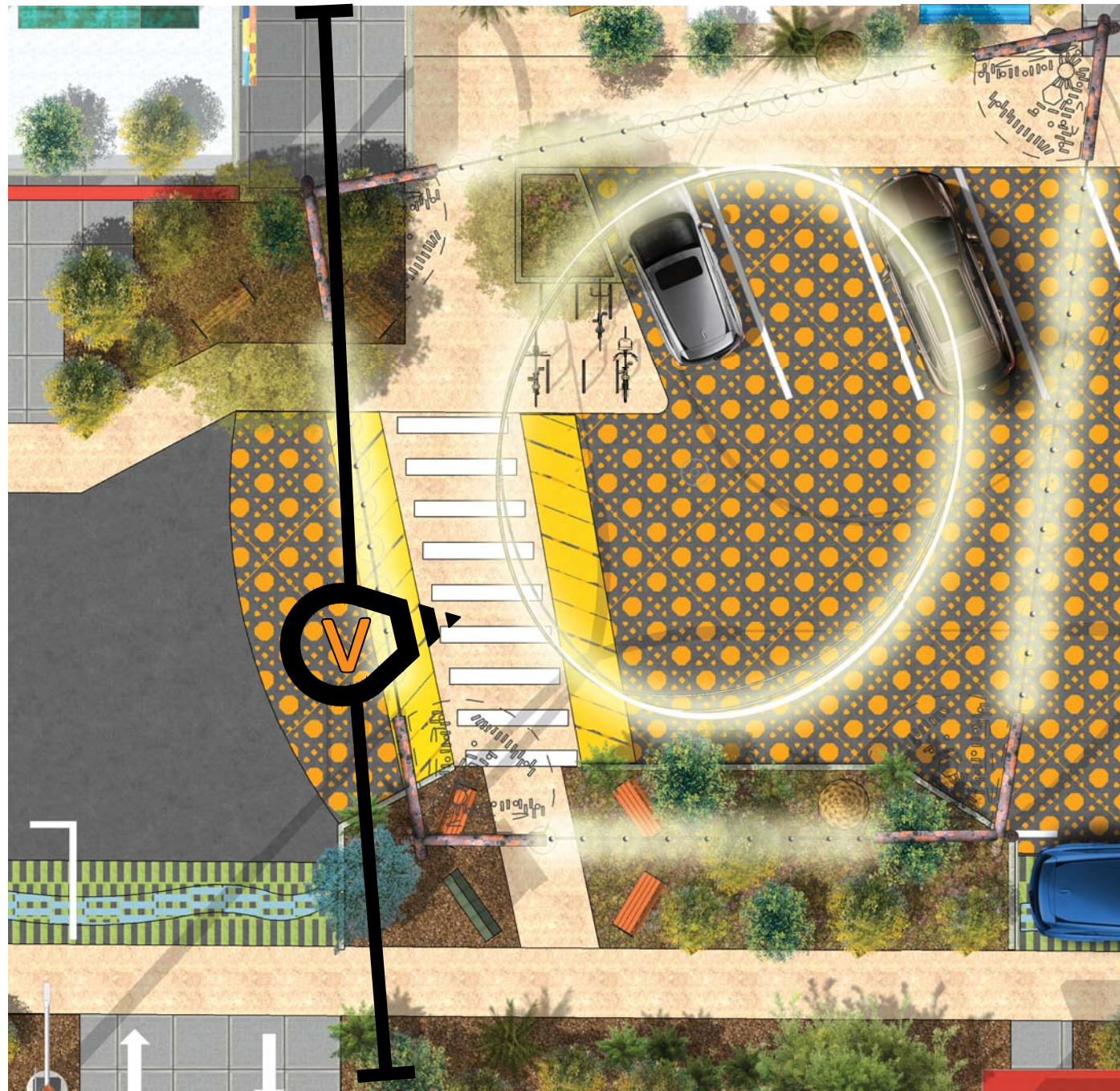
Perspective View 1 of Whistler St.



Plan Detail- Whistler St. View 2



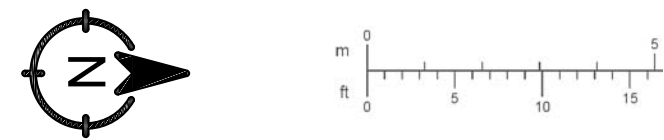
Perspective View 2 of Whistler St.



Plan Detail- Whistler St. View 3



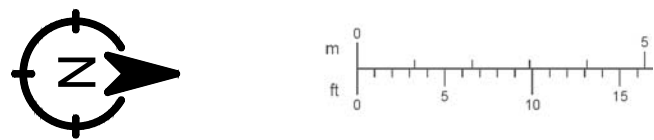
Sectional Perspective View 3 of Whistler St.



Plan Detail- Whistler St. View 4



Perspective View 4 of Whistler St.



Plan Detail- Whistler St. View 5



Perspective View 5 of Whistler St.

Birdseye View of Whistler St.



Thank You Duncan!

