

GENERAL

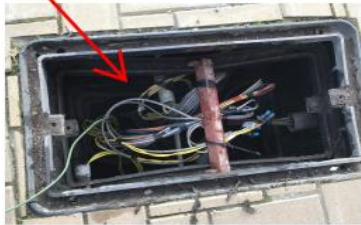
The following changes/clarifications in the RFQ documents are effective immediately. This Addendum will form part of the RFQ documents.

CLARIFICATIONS

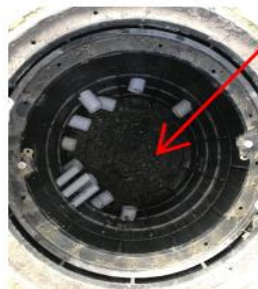
- Delete DWG CoD#2 and one pole base mounted cabinet

#	DESCRIPTION	QUANTIT Y	UNIT	RATE	TOTAL
1.0	Pole, Luminaire, Lamps, Planter Arms, GFIs				
1.1	Type A	2	each		
1.2	Type C	2	each		
2.0	Cabinet	1	each		
				SUBTOTAL	
				GST	
				TOTAL	

- Refer to attached sketch indicating power source and junction box location.
- GFI's are to be installed but not connected to power source.



existing 60amp service from existing panel at SE corner of intersection



junction box

END OF ADDENDUM #1