

CITY OF DUNCAN

CANADA AVENUE NEW PARKING LOT DECEMBER 2021

GENERAL NOTES:

1. THE CITY OF DUNCAN REFERENCES MMCD PLATINUM EDITION VOLUME II 2009 CONSTRUCTION SPECIFICATIONS. UNLESS OTHERWISE SPECIFIED HEREIN, THE CITY OF DUNCAN RESERVES THE RIGHT TO MODIFY/ALTER ANY MMCD SPECIFICATION TO SUIT THE CITY OF DUNCAN.
2. IT IS THE SOLE RESPONSIBILITY OF THE CONTRACTOR TO REINSTATE ANY SURFACE WORKS OR UNDERGROUND UTILITIES INCLUDING IRRIGATION LINES TO EXISTING OR BETTER CONDITION IF DAMAGED BY THE CONTRACTOR OR SUBCONTRACTOR DUE TO CONSTRUCTION.
3. THE LOCATION OF EXISTING UNDERGROUND UTILITIES HAVE BEEN COMPILED FROM DIFFERENT SOURCES AND ARE APPROXIMATE ONLY. EXACT LOCATION IS UNKNOWN AND MUST BE CONFIRMED PRIOR TO CONSTRUCTION. THE CITY ACCEPTS NO RESPONSIBILITY FOR THE ACCURACY OF THE INFORMATION SHOWN.
4. CONTRACTOR TO COMPLY WITH ALL ENVIRONMENTAL, FISHERIES, LEGISLATION, REGULATIONS AND CITY OF DUNCAN BY-LAWS DURING CONSTRUCTION.
5. NOT ALL, IF ANY, EXISTING STRUCTURES OR LANDSCAPING ARE SHOWN. CONTRACTOR TO IDENTIFY ANY DESIGN CONFLICTS WITH STRUCTURES AND/OR LANDSCAPING PRIOR TO INSTALLATION. IF ANY DESIGN CONFLICTS ARE FOUND THE CONTRACTOR IS TO CONTACT THE CITY OF DUNCAN PROJECT MANAGER IMMEDIATELY.
6. ANY MATERIALS, INCLUDING BUT NOT LIMITED TO SOIL, ORGANIC WASTE, PARTS, CONCRETE, ETC. TO BE REMOVED AS A PART OF CONSTRUCTION IS TO BE DISPOSED OF OFF SITE AT THE CONTRACTORS EXPENSE.
7. CONTRACTOR IS RESPONSIBLE FOR RECORDING ALL ACTUAL SITE CONDITIONS.
8. ANY NON-EMERGENCY ASSISTANCE FROM THE CITY OF DUNCAN'S PUBLIC WORKS CREW REQUIRES 2 WEEKS NOTICE.

WATER

1. THE MINIMUM DEPTH OF COVER ON WATER SERVICES SHALL BE 0.7m UNLESS OTHERWISE PERMITTED BY THE CITY OF DUNCAN.
2. ALL SERVICES ARE TO BE 19mm MST 200 POLY UNLESS OTHERWISE NOTED.
3. 14 GAUGE SOLID BLUE TRACER WIRE IS TO BE INSTALLED ON POLY SERVICES.
4. FOR THE WATER SERVICE, A NEW METER SETTER IS TO BE INSTALLED. METER SETTER IS TO BE CAMBRIDGE BRASS SERIES 6031, WITH 381mm EXTENSION AND REQUIRES A DUAL CHECK VALVE
5. CONTRACTOR IS NOT PERMITTED TO OPERATE ANY EXISTING VALVES (GATE OR OTHER) THAT ARE ON THE LIVE WATER DISTRIBUTION SYSTEM. CONTRACTOR TO COORDINATE ANY LIVE SYSTEM APPURTENANCES WITH 2 WEEKS NOTICE.

STORM

6. ALL CATCH BASIN LEADS ARE TO BE PVC SDR35 UNLESS OTHERWISE NOTED.
7. ALL CATCH BASIN BARRELS ARE TO BE MANUFACTURED PRECAST UNLESS OTHERWISE NOTED.

BACKFILL MATERIAL

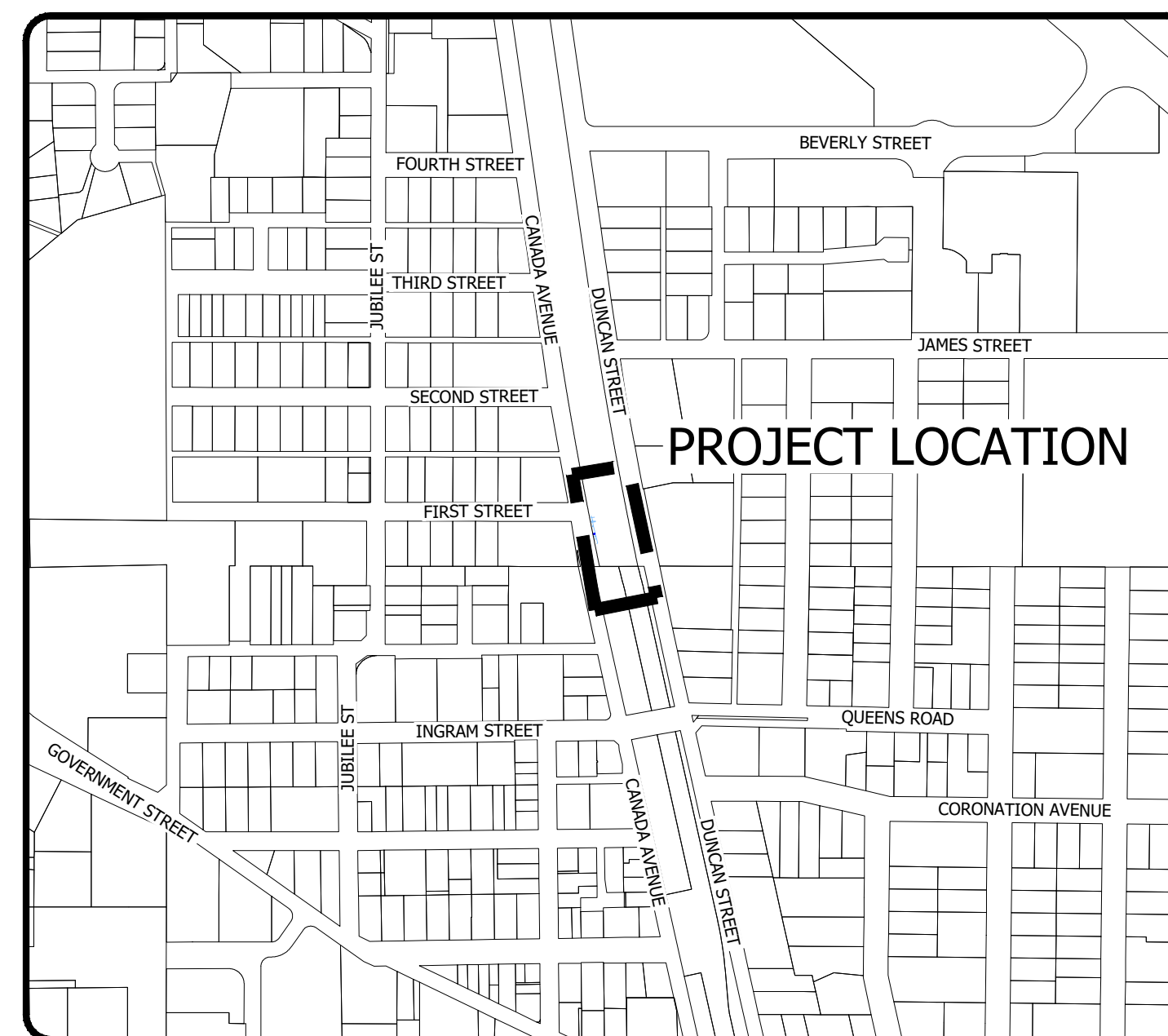
8. ALL BACKFILL MATERIALS ARE TO BE IN ACCORDANCE WITH MMCD PLATINUM EDITION VOLUME II 2009 CONSTRUCTION SPECIFICATIONS.
9. ALL COMPACTION IS TO BE COMPLETED IN ACCORDANCE WITH MMCD PLATINUM EDITION VOLUME II 2009 CONSTRUCTION SPECIFICATIONS.
10. PROOF ROLL PARKING LOT BASE MATERIAL AS PER MMCD SPECIFICATIONS, HOWEVER A SINGLE AXLE DUMP TRUCK IS TO BE USED. THE DUMP TRUCK IS TO HAVE A REAR AXLE LOAD OF 8000kg AND A TIRE PRESSURE OF 550 kpa.

ELECTRICAL

11. ALL ELECTRICAL WORK IS TO BE COMPLETED IN ACCORDANCE TO THE MOST CURRENT APPLICABLE VERSION OF THE ELECTRICAL CODE.

DRAWING INDEX

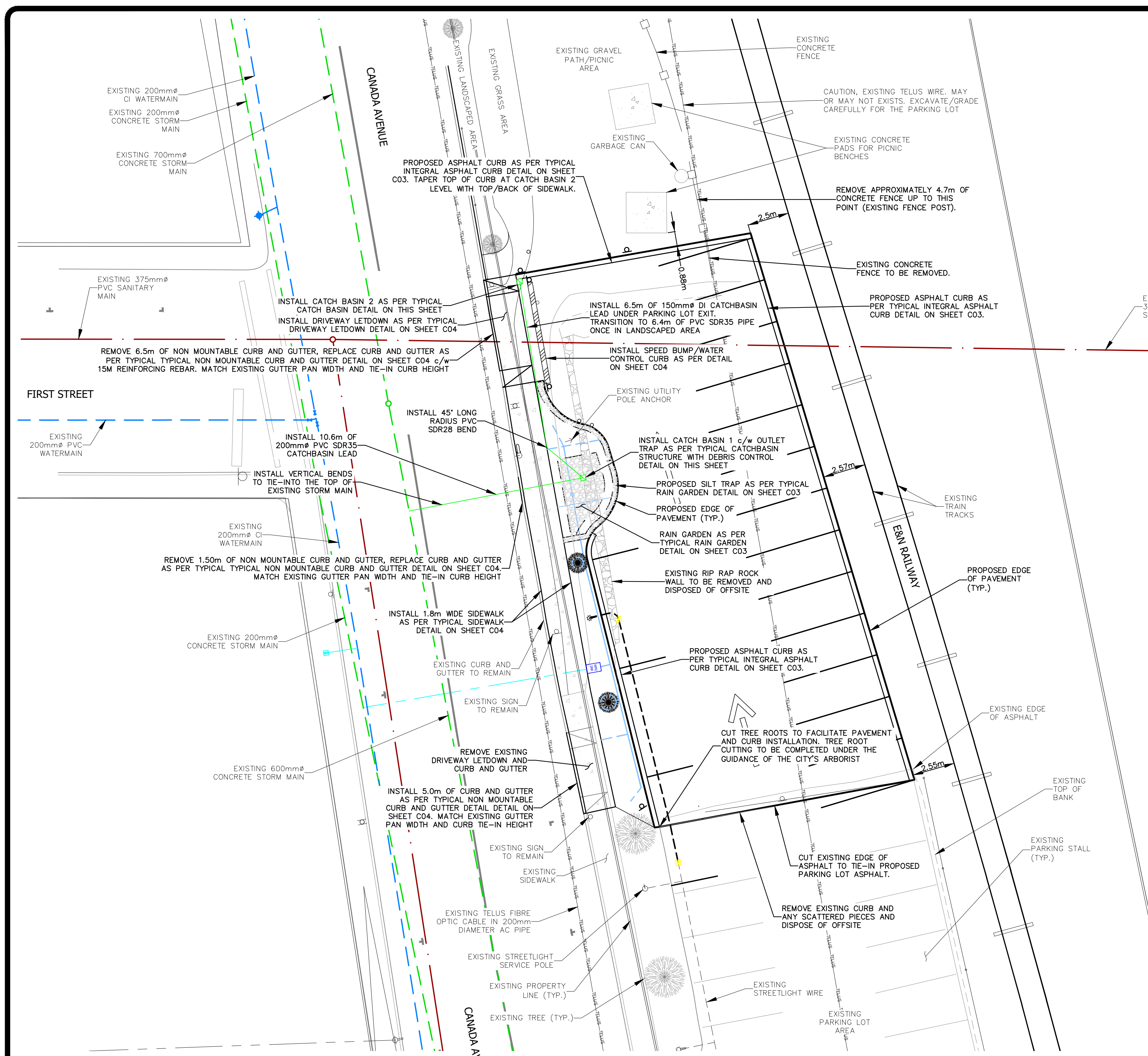
- C01 - TITLE SHEET
- C02 - OVERALL CONSTRUCTION PLAN & STORM DESIGN
- C03 - CURB/GUTTER, SIDEWALK AND PARKING LOT GRADING PLAN
- C04 - LANDSCAPING, SIGN, STREETLIGHT AND PAINT MARKING PLAN
- C05 - STANDARD DETAILS



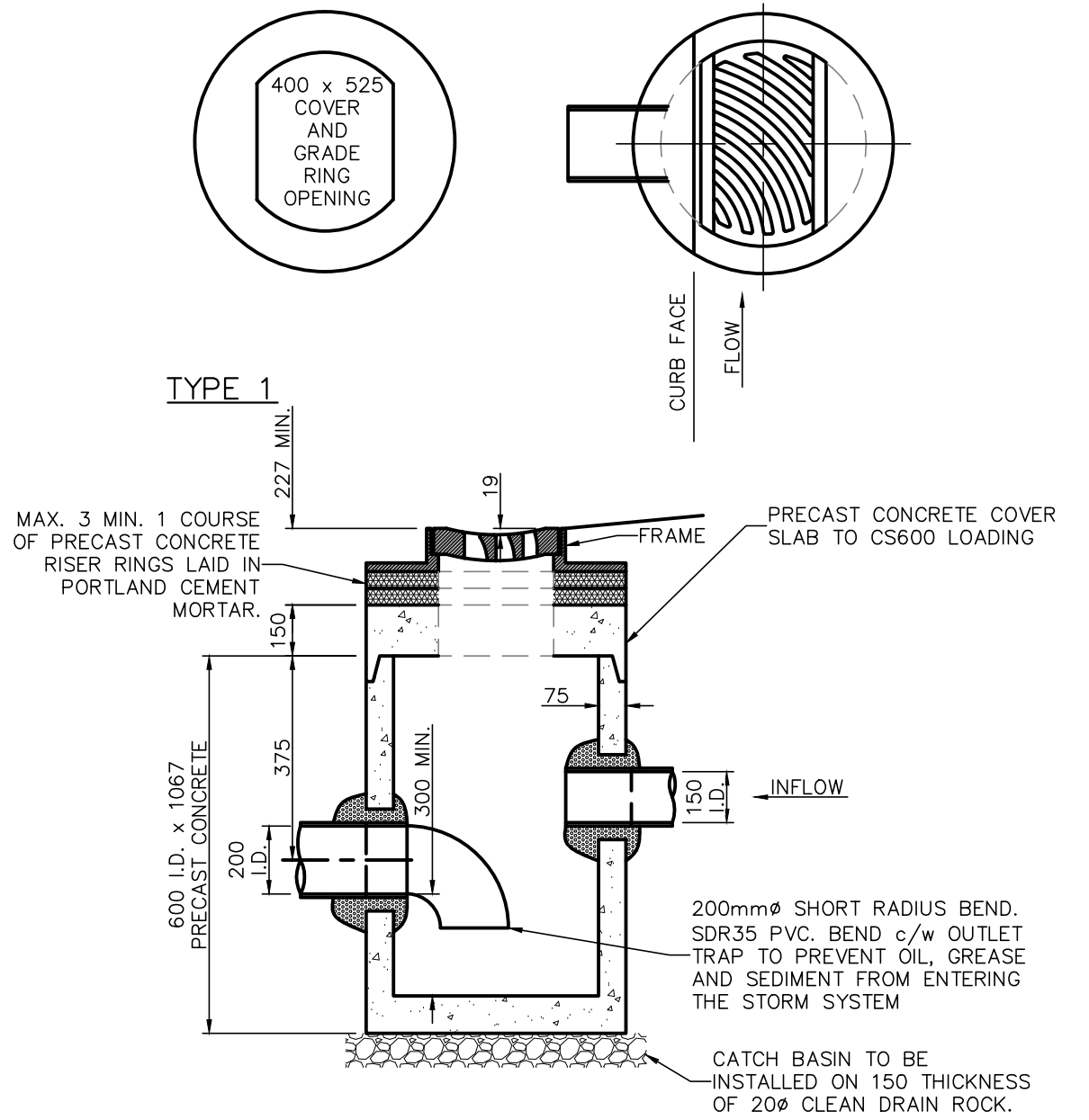
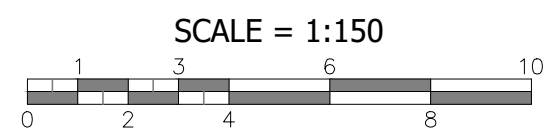
LEGEND	PROPOSED	WATERMAIN	WATERMAIN BLOW OFF	STORM MANHOLE	SANITARY LINE BREAK	WATERMAIN	ARV	CATCH BASIN	LINE BREAK	DESIGNED BY:	SHD/JP	APPROVED BY:	JP	SCALE	
	WATER SERVICE	WATERMAIN CAP	STORM CAP	SANITARY MANHOLE	WATER SERVICE METER	FIRE HYDRANT	SANITARY MAIN	FENCE	CHECKED BY:	SHD	DESIGN START DATE:	2021-10-04	HZ. SCALE:	N/A	
	WATER VALVE	WATERMAIN LINE BREAK	STORM LINE BREAK	SANITARY SERVICE	WATER SERVICE	WATERMAIN BLOW OFF	SANITARY SERVICE	UTILITY POLE AND ANCHOR	DATE		CURRENT DATE:	2021-10-04	VT. SCALE:	N/A	
	WATERMAIN REDUCER	STORM MAIN	INLET/OUTLET/HEADWALL	CONCRETE	WATER VALVE	STORM MAIN	MANHOLE	SIGN	REV#		DESCRIPTION		BY		
	WATERMAIN COUPLER	STORM CLEANOUT	SANITARY MAIN	GUTTER LINE	WATERMAIN REDUCER	STORM SERVICE	CLEANOUT	GUTTER LINE	R9	2021-12-15	ISSUED FOR RFD				
	FIRE HYDRANT	STORM SERVICE	SANITARY CLEANOUT	ELEVATION	WATERMAIN COUPLER	INLET/OUTLET/HEADWALL	CAP	WATER COURSE	R8	2021-12-01	ISSUED FOR IRRIGATION AND STREETLIGHT UPDATE				
	ARV	CATCH BASIN	SANITARY CAP	GRADE	GAS	BC HYDRO	TELUS	SCALE OF LEDGEND: NTS							



CITY OF DUNCAN	FILE NUMBER:	2020.010
CANADA AVENUE NEW PARKING LOT	SHEET:	1 OF 5
TITLE SHEET	REVISION NO.	R9
	DRAWING:	C01
	DWG FILE:	2020.010 - R9 DP

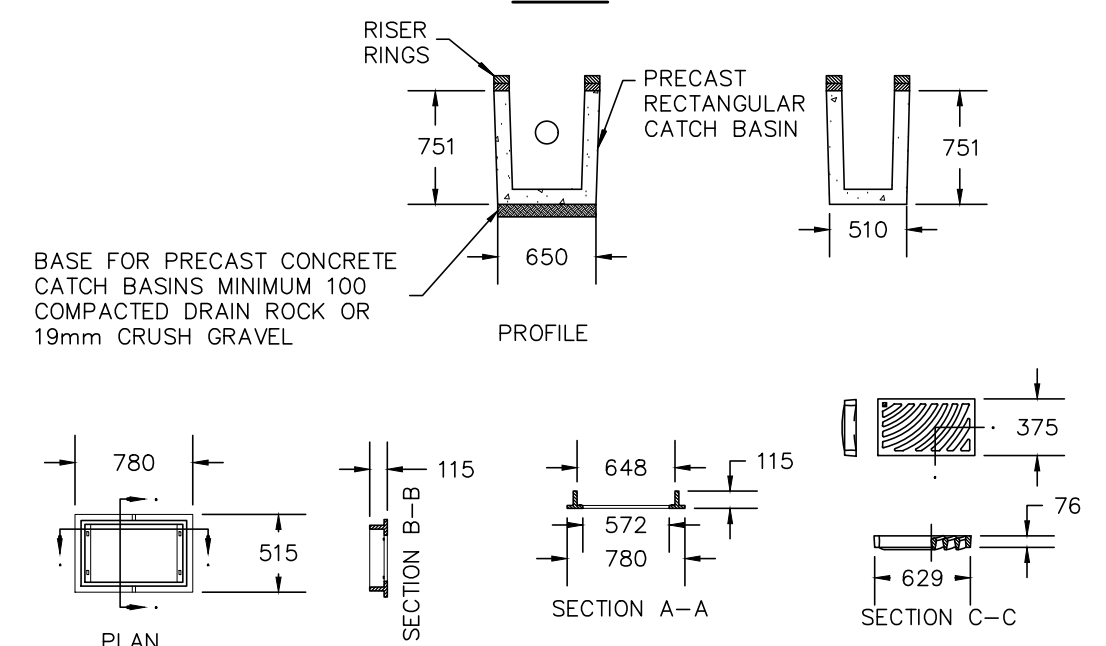


OVERALL CONSTRUCTION PLAN & STORM DESIGN



- NOTES:**
- FOR GRATE AND FRAME DETAILS SEE STD. DWG. D10, D11 AND D12
 - ALL JOINTS TO BE PRE-WETTED BEFORE MORTAR IS PLACED.
 - THE GRATE IS TO BE PLACED 13mm BELOW FINISHED PAVING IF CURB AND GUTTER IS TO BE CONSTRUCTED. CATCH BASIN CASTINGS ARE TO BE LEFT LOOSE UNTIL AFTER THE CURBING OPERATION HAS BEEN COMPLETED. MORTAR SHALL COMPLY TO THE LATEST VERSION OF A.S.T.M.
 - PRECAST REINFORCED CONCRETE SECTIONS SHALL CONFORM TO A.S.T.M. C-478.
 - PRECAST REINFORCED RISER RINGS SHALL CONFORM TO A.S.T.M. C-478.
 - ONLY PRODUCTS APPROVED BY THE CITY ENGINEER WILL BE ACCEPTED FOR INSTALLATION.
 - ALL DIMENSIONS ARE IN MILLIMETERS UNLESS OTHERWISE NOTED.

TYPICAL CATCH BASIN STRUCTURE WITH DEBRIS CONTROL N.T.S.



- NOTES:**
- MAX. 3. MIN. 1 COURSE OF PRECAST CONCRETE RISER RINGS LAID IN PORTLAND CEMENT MORTAR.
 - ALL JOINTS TO BE PRE-WETTED BEFORE MORTAR IS PLACED.
 - THE GRATE IS TO BE PLACED 13mm BELOW FINISHED PAVING IF CURBS AND GUTTER IS TO BE CONSTRUCTED. CATCH BASIN CASTINGS ARE TO BE LEFT LOOSE UNTIL AFTER THE CURBING OPERATION HAS BEEN COMPLETED.
 - BASE OF GRANULAR MATERIAL, COMPACTED TO 95% MODIFIED PROCTOR.
 - MORTAR SHALL COMPLY TO A.S.T.M. LATEST REVISION.
 - PRECAST REINFORCED CONCRETE SECTIONS SHALL CONFORM TO A.S.T.M. C-478.
 - PRECAST REINFORCED RISER RINGS SHALL CONFORM TO A.S.T.M. C-478.
 - ALL CASTING SHALL BE CERTIFIED TO MEET H20 LOADING REQUIREMENTS.
 - APPROXIMATE WEIGHT OF CASTINGS FRAME = 72 kg
 - GRATE = 65 kg
 - ONLY PRODUCTS APPROVED BY THE ENGINEER WILL BE ACCEPTED FOR INSTALLATION
 - LEFT OR RIGHT HAND GRATINGS TO BE USED AS APPROPRIATE TO FACE CURB
 - ALL DIMENSIONS ARE IN MILLIMETERS UNLESS OTHERWISE NOTED.

TYPICAL CATCH BASIN DETAIL N.T.S.

STORM SYSTEM INVERTS:

- TIE-IN AT EX STORM MAIN:
EX GROUND ELEV = ±11.73m
EX STORM MAIN TOP PIPE = ±9.45m
- PR CATCH BASIN 1:
PR RIM ELEVATION = 11.678m
PR CB LEAD WEST INV = 10.854m
PR CB LEAD OVER TELUS CROSSING, INV = 10.817m
PR CB LEAD NORTH INV = 11.054m
- PR CATCH BASIN 2:
PR RIM ELEVATION = 11.724m
PR CB LEAD SOUTH INV = 11.283m

GENERAL NOTES:

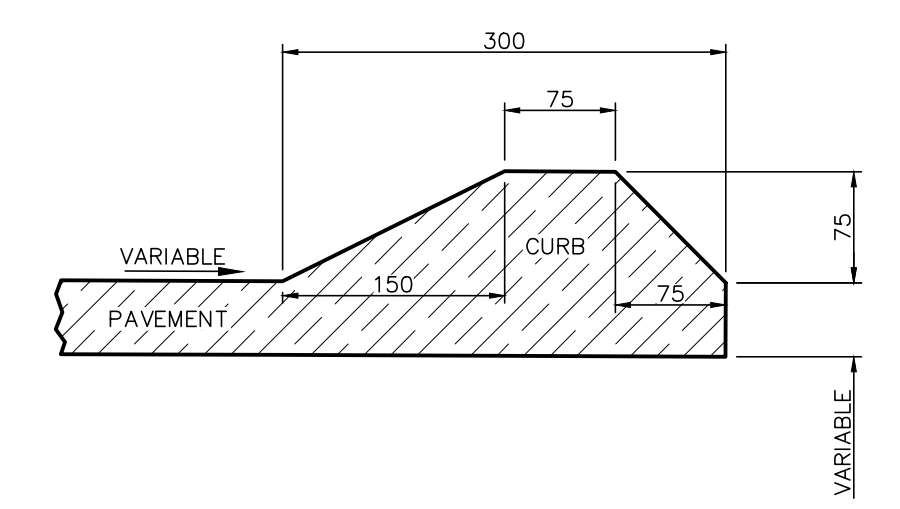
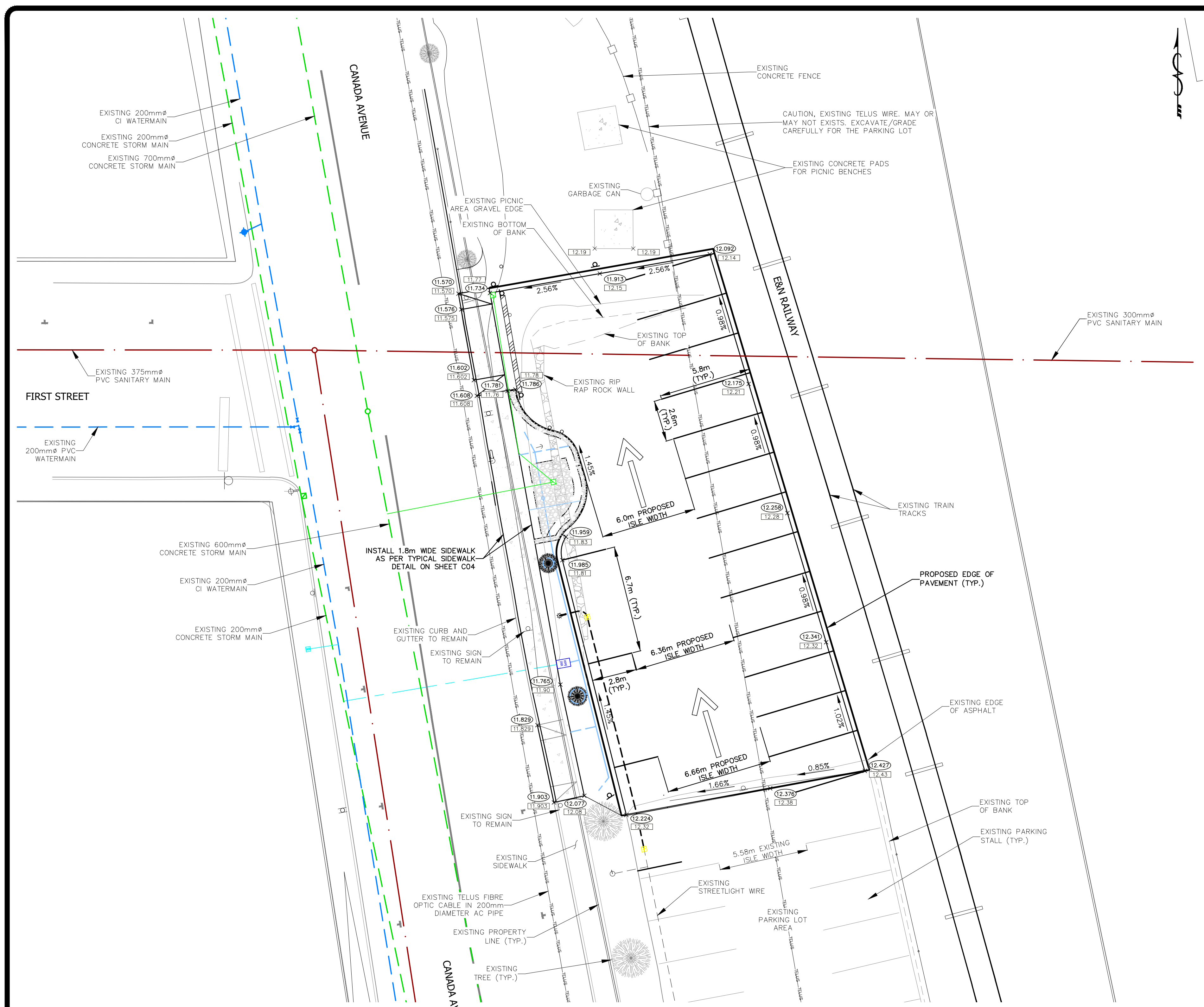
- ALL DIMENSIONS ARE IN METRES UNLESS OTHERWISE NOTED.
- FOR STANDARD DETAILS SEE DRAWING C04.
- LOCATIONS OF THIRD PARTY UTILITIES ARE APPROXIMATE ONLY. CONTRACTOR TO VERIFY LOCATION IN THE FIELD, AND REPORT ANY DESIGN CONFLICTS TO THE CITY.

LEGEND	PROPOSED	EXISTING	ARV	TELUS	SCALE OF LEGEND: NTS
WATERMAIN	—	—	—	—	—
WATER SERVICE	—	—	—	—	—
WATER VALVE	—	—	—	—	—
WATERMAIN REDUCER	—	—	—	—	—
WATERMAIN COUPLER	—	—	—	—	—
FIRE HYDRANT	—	—	—	—	—
ARV	—	—	—	—	—
WATERMAIN BLOW OFF	—	—	—	—	—
WATERMAIN CAP	—	—	—	—	—
WATERMAIN LINE BREAK	—	—	—	—	—
STORM MAIN	—	—	—	—	—
STORM CLEANOUT	—	—	—	—	—
STORM SERVICE	—	—	—	—	—
CATCH BASIN	—	—	—	—	—
STORM MANHOLE	—	—	—	—	—
STORM CAP	—	—	—	—	—
STORM LINE BREAK	—	—	—	—	—
INLET/OUTLET/HEADWALL	—	—	—	—	—
SANITARY MAIN	—	—	—	—	—
SANITARY CLEANOUT	—	—	—	—	—
SANITARY CAP	—	—	—	—	—
SANITARY LINE BREAK	—	—	—	—	—
SANITARY MANHOLE	—	—	—	—	—
SANITARY SERVICE	—	—	—	—	—
CONCRETE	—	—	—	—	—
GUTTER LINE	—	—	—	—	—
ELEVATION	—	—	—	—	—
ARV	—	—	—	—	—
FIRE HYDRANT	—	—	—	—	—
WATERMAIN BLOW OFF	—	—	—	—	—
WATERMAIN METER	—	—	—	—	—
WATER SERVICE	—	—	—	—	—
WATER VALVE	—	—	—	—	—
WATERMAIN REDUCER	—	—	—	—	—
WATERMAIN COUPLER	—	—	—	—	—
GAS	—	—	—	—	—
ARV	—	—	—	—	—
CATCH BASIN	—	—	—	—	—
LINE BREAK	—	—	—	—	—
FENCE	—	—	—	—	—
UTILITY POLE AND ANCHOR	—	—	—	—	—
MANHOLE	—	—	—	—	—
CLEANOUT	—	—	—	—	—
CAP	—	—	—	—	—
WATER COURSE	—	—	—	—	—
SCALE OF LEGEND: NTS	—	—	—	—	—

DESIGNED BY: SHD/JP	APPROVED BY: JP	SCALE
DRAWN BY: SHD	DESIGN START DATE: 2021-10-04	Hz. SCALE: 1:150
CHECKED BY: JP	CURRENT DATE: 2021-10-04	Vt. SCALE: N/A
REVISIONS		
REV#	DATE	DESCRIPTION
R9	2021-12-15	ISSUED FOR RFD
R8	2021-12-01	ISSUED FOR IRRIGATION AND STREETLIGHT UPDATE

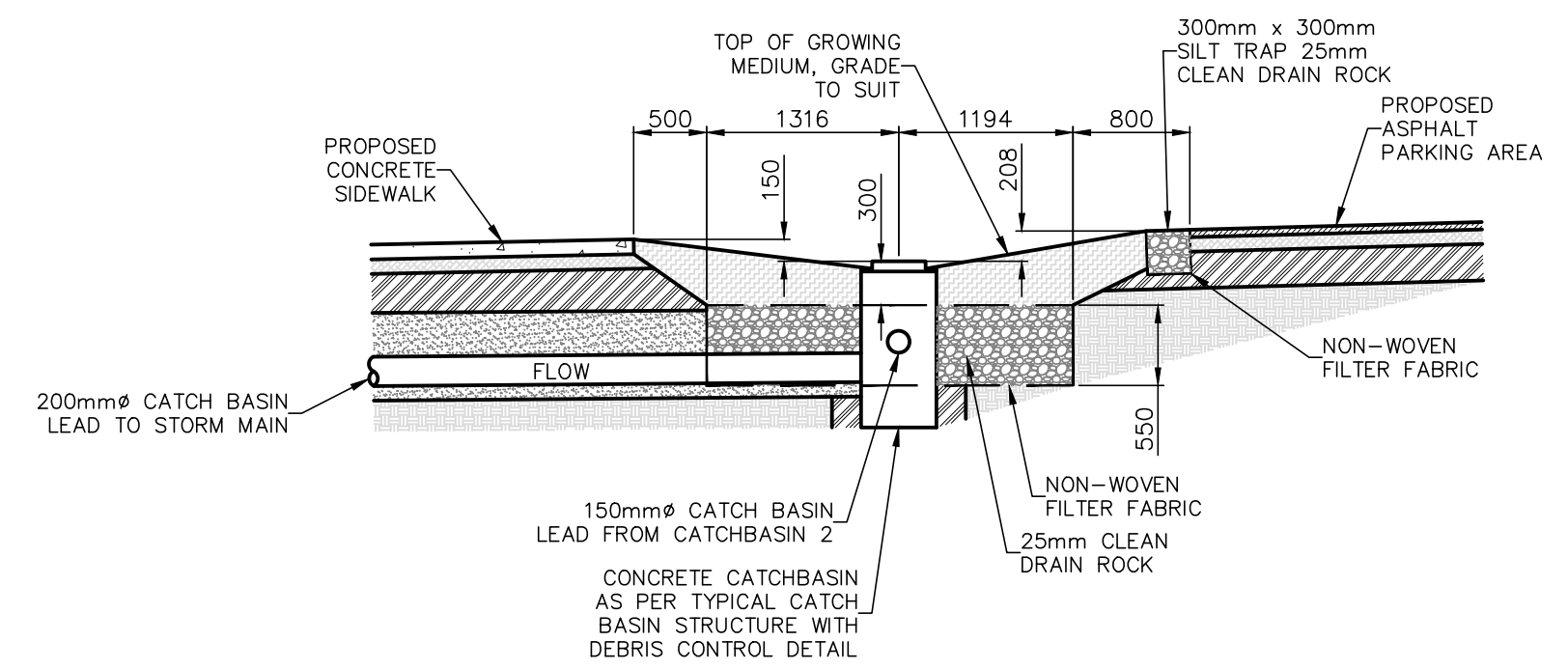
CITY OF DUNCAN
200 CRAIG STREET
DUNCAN, BC
V9L 3Y2

CITY OF DUNCAN	FILE NUMBER: 2020.010
CANADA AVENUE NEW PARKING LOT	SHEET: 2 OF 5
OVERALL CONSTRUCTION PLAN & STORM DESIGN	REVISION NO. R9
	DRAWING: C02
	DWG FILE: 2020.010 - R9 DP



NOTES:
 1. CURB AND GUTTER TO BE BEDDED ON 100 COMPACTED THICKNESS OF 19 MINUS CRUSH GRAVEL COMPACTED TO 95% MODIFIED PROCTOR DENSITY.
 2. THE LENGTH OF TRANSITION FROM ONE TYPE OF CURB TO ANOTHER SHALL BE 1.0m
 3. ALL DIMENSIONS ARE IN MILLIMETERS UNLESS OTHERWISE NOTED.

**TYPICAL INTEGRAL ASPHALT CURB
N.T.S.**

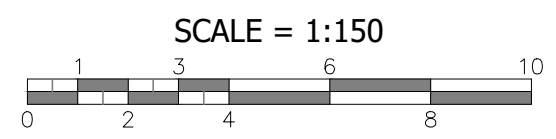


NOTES:
 1. ALL SOFT LANDSCAPING TO BE COMPLETED BY THE CITY OF DUNCAN.
 2. ALL DIMENSIONS ARE IN MILLIMETERS UNLESS OTHERWISE NOTED.

**TYPICAL RAIN GARDEN DETAIL
N.T.S.**

PARKING LOT NOTES:
 1. ASPHALT TO BE 50mm COMPACTED THICKNESS.
 2. CONCRETE SIDEWALK TO BE 100mm THICK.
 3. CONCRETE DRIVEWAY LETDOWN TO BE 150mm THICK.
 4. BASE MATERIAL IS TO BE 19mm CURSH AT 100mm COMPACTED THICKNESS AND COMPACTED TO 95% MODIFIED PROCTOR DENSITY.
 5. SUBBASE MATERIAL TO BE 75mm MINUS SGB AT 250mm COMPACTED THICKNESS AND COMPACTED TO 95% MODIFIED PROCTOR DENSITY.
 6. ALL ELEVATIONS SHOWN ARE IN METRES.

GENERAL NOTES:
 1. ALL DIMENSIONS ARE IN METRES UNLESS OTHERWISE NOTED.
 2. FOR STANDARD DETAILS SEE DRAWING C04.
 3. LOCATIONS OF THIRD PARTY UTILITIES ARE APPROXIMATE ONLY. CONTRACTOR TO VERIFY LOCATION IN THE FIELD, AND REPORT ANY DESIGN CONFLICTS TO THE CITY.



**CURB/GUTTER, SIDEWALK, AND
PARKING LOT GRADING PLAN**

LEGEND	PROPOSED	EXISTING	ARV	TELUS	SCALE OF LEGEND: NTS
WATERMAIN	—	—	—	—	—
WATER SERVICE	—	—	—	—	—
WATER VALVE	—	—	—	—	—
WATERMAIN REDUCER	—	—	—	—	—
WATERMAIN COUPLER	—	—	—	—	—
FIRE HYDRANT	—	—	—	—	—
ARV	—	—	—	—	—
WATERMAIN BLOW OFF	—	—	—	—	—
WATERMAIN CAP	—	—	—	—	—
WATERMAIN LINE BREAK	—	—	—	—	—
STORM MAIN	—	—	—	—	—
STORM CLEANOUT	—	—	—	—	—
STORM SERVICE	—	—	—	—	—
CATCH BASIN	—	—	—	—	—
STORM MANHOLE	—	—	—	—	—
STORM CAP	—	—	—	—	—
STORM LINE BREAK	—	—	—	—	—
INLET/OUTLET/HEADWALL	—	—	—	—	—
SANITARY MAIN	—	—	—	—	—
SANITARY CLEANOUT	—	—	—	—	—
SANITARY CAP	—	—	—	—	—
SANITARY LINE BREAK	—	—	—	—	—
SANITARY MANHOLE	—	—	—	—	—
SANITARY SERVICE	—	—	—	—	—
CONCRETE	—	—	—	—	—
GUTTER LINE	—	—	—	—	—
ELEVATION	—	—	—	—	—
GRADE	—	—	—	—	—
ARV	—	—	—	—	—
FIRE HYDRANT	—	—	—	—	—
SANITARY MAIN	—	—	—	—	—
SANITARY SERVICE	—	—	—	—	—
UTILITY POLE AND ANCHOR	—	—	—	—	—
SIGN	—	—	—	—	—
GUTTER LINE	—	—	—	—	—
WATER COURSE	—	—	—	—	—
SCALE OF LEGEND: NTS	—	—	—	—	—

DESIGNED BY: SHD/JP	APPROVED BY: JP	SCALE	
DRAWN BY: SHD	DESIGN START DATE: 2021-10-04	Hz. SCALE: 1:150	
CHECKED BY: JP	CURRENT DATE: 2021-10-04	Vt. SCALE: N/A	
REVISIONS			
REV#	DATE	DESCRIPTION	BY
R9	2021-12-15	ISSUED FOR RFD	SHD
R8	2021-12-01	ISSUED FOR IRRIGATION AND STREETLIGHT UPDATE	SHD

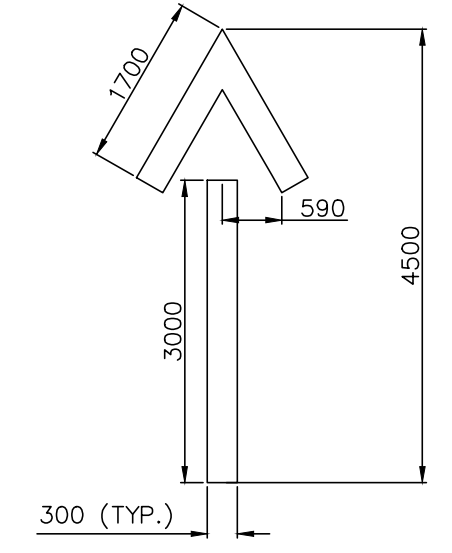
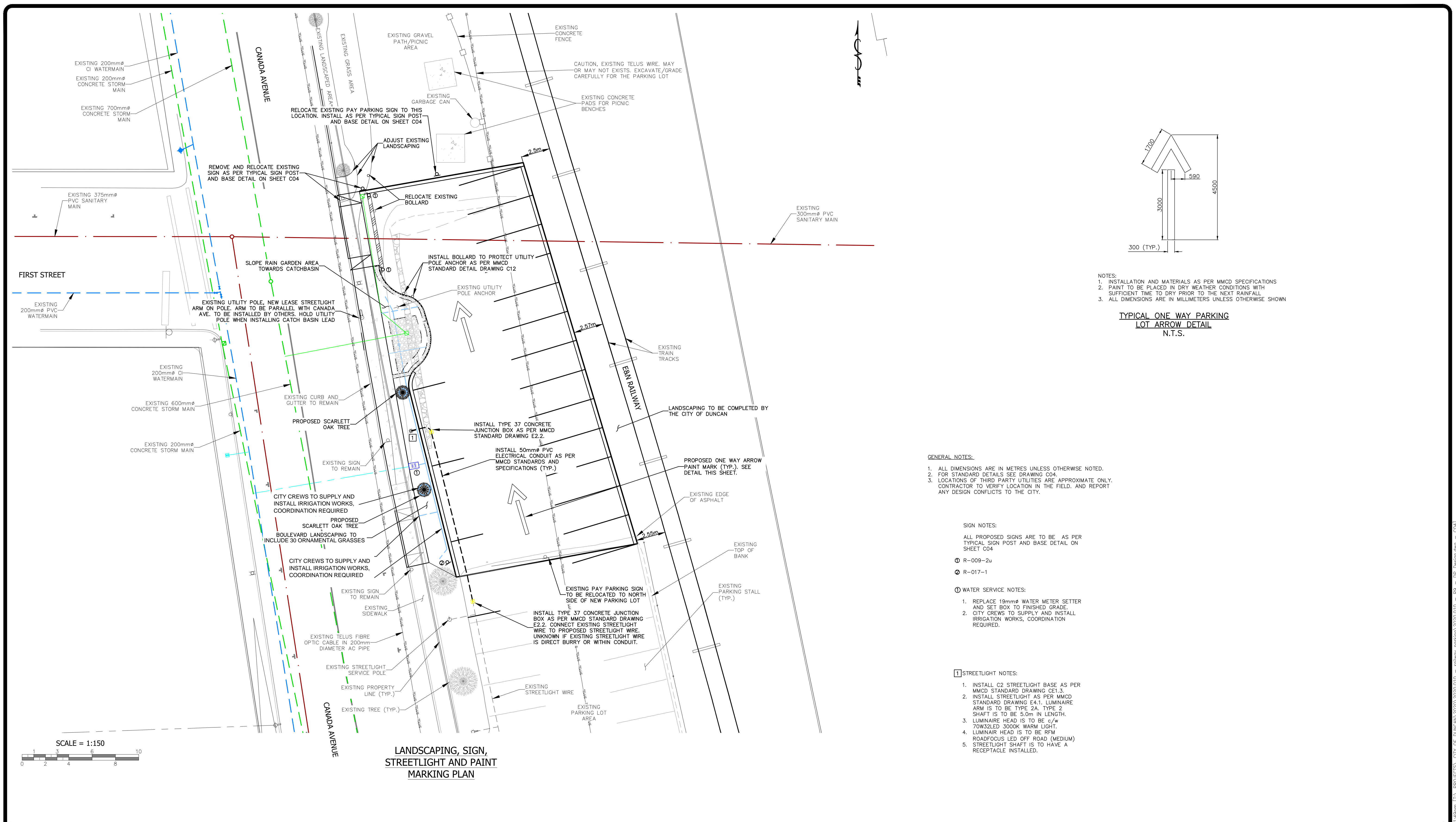
CITY OF DUNCAN
 200 CRAIG STREET
 DUNCAN, BC
 V9L 3Y2

CITY OF DUNCAN
 CANADA AVENUE
 NEW PARKING LOT

**CURB/GUTTER, SIDEWALK AND
PARKING LOT GRADING PLAN**

FILE NUMBER: 2020.010
SHEET: 3 OF 5
REVISION NO. R9
DRAWING: C03
DWG FILE: 2020.010 - R9 DP

s:\projects\city of duncan\2020\2020.010 - railway parking\2020.010 - R9 - DP Design.dwg - C03
 2021-12-15 14:48pm



NOTES:
 1. INSTALLATION AND MATERIALS AS PER MMCD SPECIFICATIONS
 2. PAINT TO BE PLACED IN DRY WEATHER CONDITIONS WITH SUFFICIENT TIME TO DRY PRIOR TO THE NEXT RAINFALL
 3. ALL DIMENSIONS ARE IN MILLIMETERS UNLESS OTHERWISE SHOWN

TYPICAL ONE WAY PARKING LOT ARROW DETAIL
 N.T.S.

GENERAL NOTES:

1. ALL DIMENSIONS ARE IN METRES UNLESS OTHERWISE NOTED.
2. FOR STANDARD DETAILS SEE DRAWING C04.
3. LOCATIONS OF THIRD PARTY UTILITIES ARE APPROXIMATE ONLY. CONTRACTOR TO VERIFY LOCATION IN THE FIELD, AND REPORT ANY DESIGN CONFLICTS TO THE CITY.

SIGN NOTES:

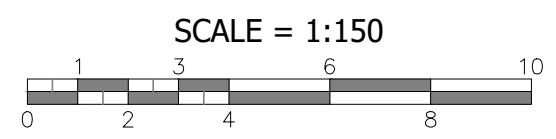
- ALL PROPOSED SIGNS ARE TO BE AS PER TYPICAL SIGN POST AND BASE DETAIL ON SHEET C04
- Ⓡ R-009-2u
 - Ⓡ R-017-1

WATER SERVICE NOTES:

1. REPLACE 19mmØ WATER METER SETTER AND SET BOX TO FINISHED GRADE.
2. CITY CREWS TO SUPPLY AND INSTALL IRRIGATION WORKS, COORDINATION REQUIRED.

STREETLIGHT NOTES:

1. INSTALL C2 STREETLIGHT BASE AS PER MMCD STANDARD DRAWING CE1.3.
2. INSTALL STREETLIGHT AS PER MMCD STANDARD DRAWING E4.1. LUMINAIRE ARM IS TO BE TYPE 2A, TYPE 2 SHAFT IS TO BE 5.0m IN LENGTH.
3. LUMINAIRE HEAD IS TO BE c/w 70W32LED 3000K WARM LIGHT.
4. LUMINAIRE HEAD IS TO BE RFM ROADFOCUS LED OFF ROAD (MEDIUM)
5. STREETLIGHT SHAFT IS TO HAVE A RECEPTACLE INSTALLED.



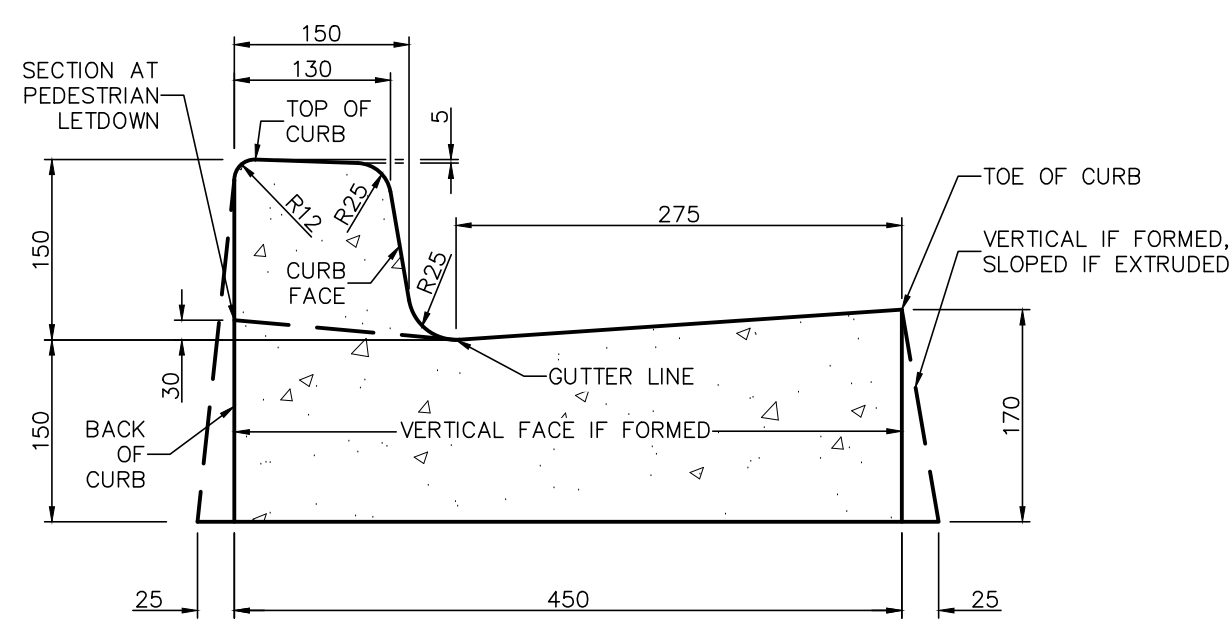
LANDSCAPING, SIGN, STREETLIGHT AND PAINT MARKING PLAN

LEGEND	PROPOSED	WATERMAIN	WATERMAIN BLOW OFF	STORM MANHOLE	SANITARY LINE BREAK	WATERMAIN	ARV	CATCH BASIN	LINE BREAK	DESIGNED BY:	SHD/JP	APPROVED BY:	JP	SCALE	1:150
	EXISTING	WATER SERVICE	WATERMAIN CAP	STORM CAP	SANITARY MANHOLE	WATER SERVICE METER	FIRE HYDRANT	SANITARY MAIN	FENCE	CHECKED BY:	SHD	DESIGN START DATE:	2021-10-04	HZ. SCALE:	1:150
		WATER VALVE	WATERMAIN LINE BREAK	STORM LINE BREAK	SANITARY SERVICE	WATER SERVICE	WATERMAIN BLOW OFF	SANITARY SERVICE	UTILITY POLE AND ANCHOR		JP	CURRENT DATE:	2021-10-04	VT. SCALE:	N/A
		WATERMAIN REDUCER	STORM MAIN	INLET/OUTLET/HEADWALL	CONCRETE	WATER VALVE	STORM MAIN	MANHOLE	SIGN	REV#	DATE	DESCRIPTION	BY		
		WATERMAIN COUPLER	STORM CLEANOUT	SANITARY MAIN	GUTTER LINE	WATERMAIN REDUCER	STORM SERVICE	CLEANOUT	GUTTER LINE	R9	2021-12-15	ISSUED FOR RFD	SHD		
		FIRE HYDRANT	STORM SERVICE	SANITARY CLEANOUT	ELEVATION	WATERMAIN COUPLER	INLET/OUTLET/HEADWALL	CAP	WATER COURSE	R8	2021-12-01	ISSUED FOR IRRIGATION AND STREETLIGHT UPDATE	SHD		
		ARV	CATCH BASIN	SANITARY CAP	GRADE	GAS	BC HYDRO	TELUS	SCALE OF LEGGEND: NTS						

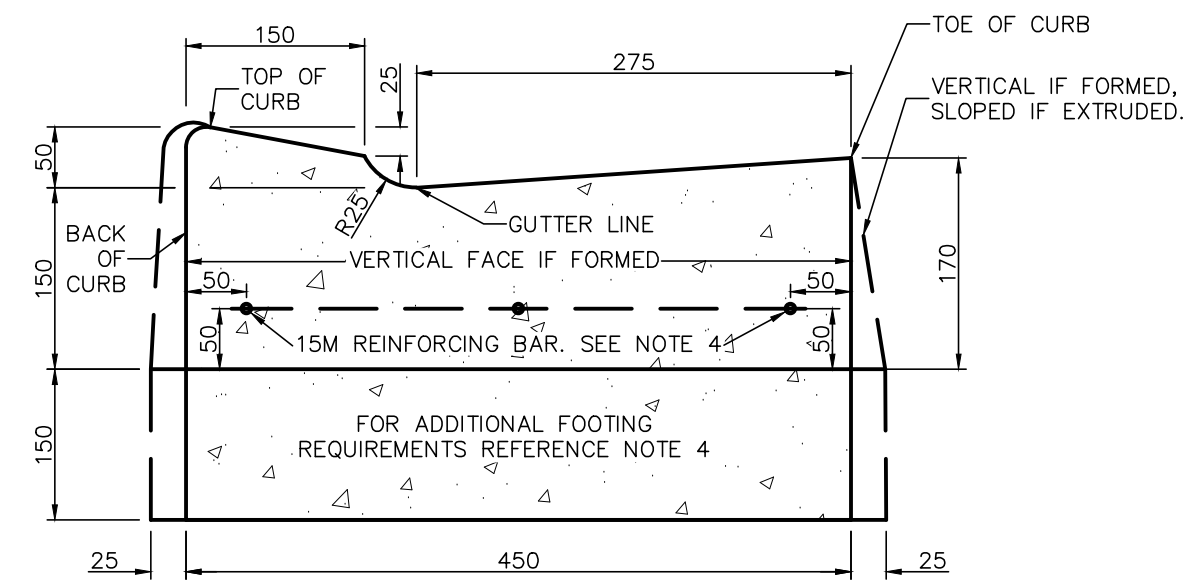


CITY OF DUNCAN	FILE NUMBER:	2020.010
CANADA AVENUE NEW PARKING LOT	SHEET:	4 OF 5
LANDSCAPING, SIGN, STREETLIGHT AND PAINT MARKING PLAN	REVISION NO.:	R9
	DRAWING:	C04
	DWG FILE:	2020.010 - R9 DP

s:\projects\city of duncan\2020\2020.010 - railway parking\2020.010 - R9 - DP Design.dwg - C04
 1:49pm - Dec 15, 2021



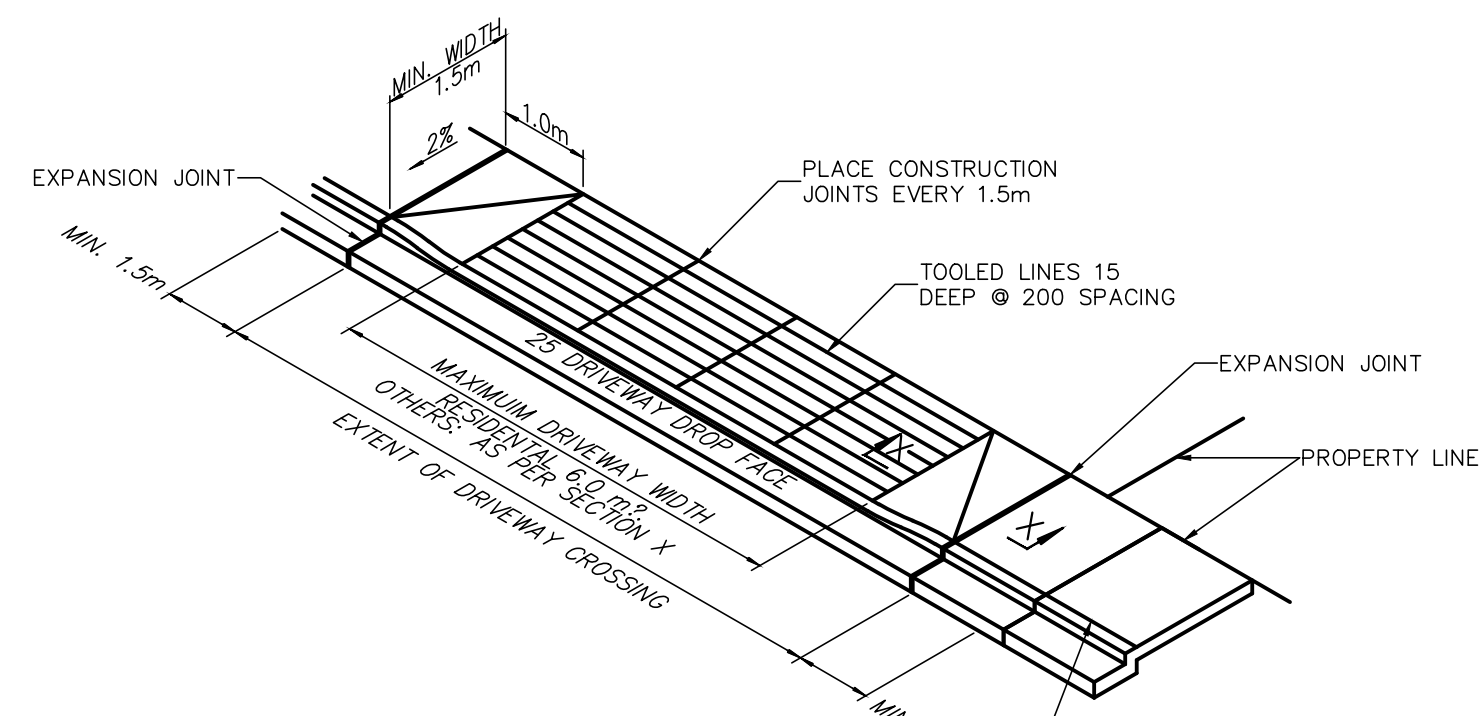
CURB WITH INTEGRAL GUTTER



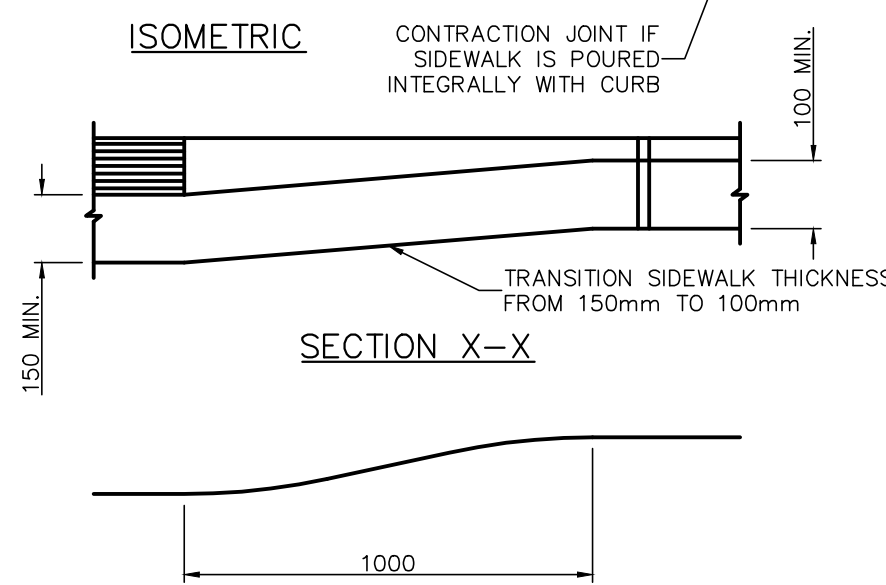
DROP CURB WITH INTEGRAL GUTTER

- NOTES:**
- CURB AND GUTTER TO BE BEDDED ON 100 COMPACTED THICKNESS OF 19 MINUS CRUSH GRAVEL COMPACTED TO 95% MODIFIED PROCTOR DENSITY.
 - THE LENGTH OF TRANSITION FROM ONE TYPE OF CURB TO ANOTHER SHALL BE 1.0m
 - REINFORCING BARS OR CONCRETE FOOTING REQUIRED FOR LANE ACCESS, PARKING LOT ACCESS AND FOR COMMERCIAL AND INDUSTRIAL DRIVEWAY ACCESS
 - ALL DIMENSIONS ARE IN MILLIMETERS UNLESS OTHERWISE NOTED.

TYPICAL NON MOUNTABLE CURB AND GUTTER DETAIL N.T.S.



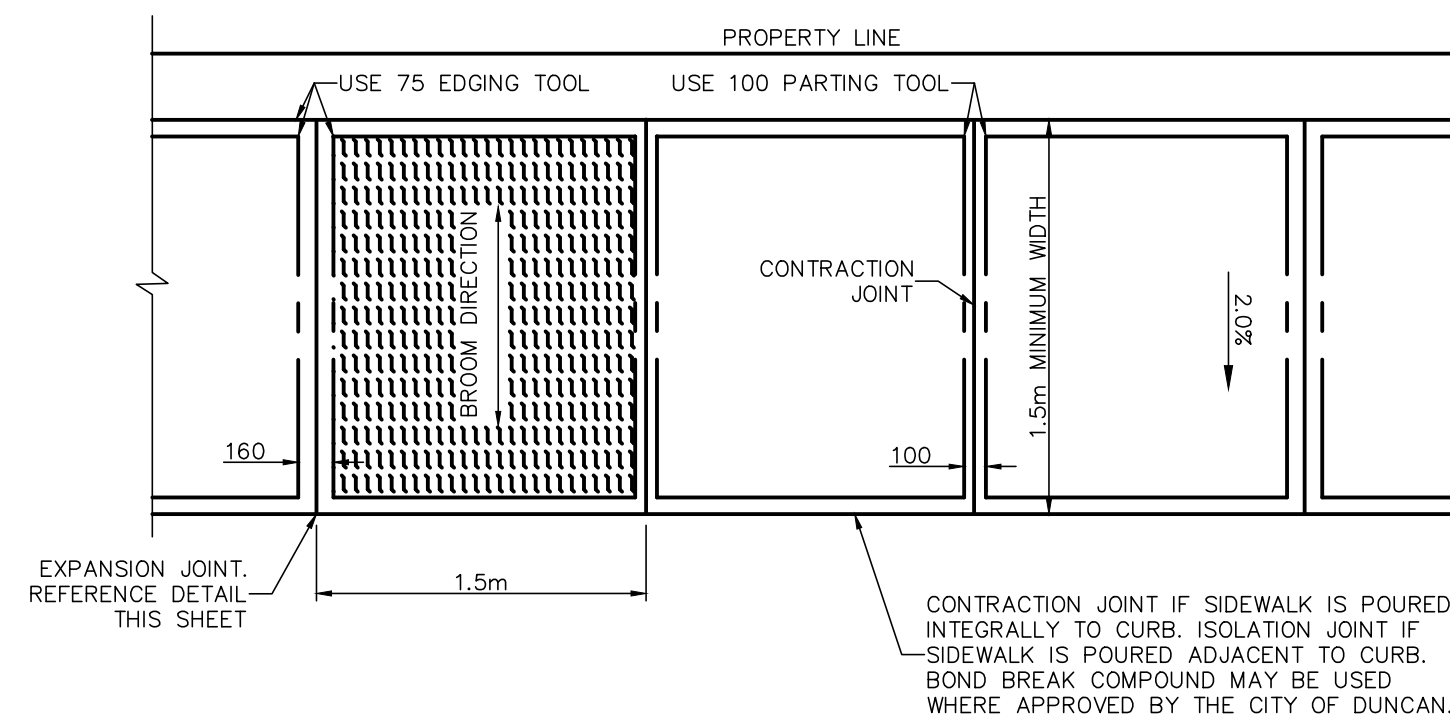
ISOMETRIC



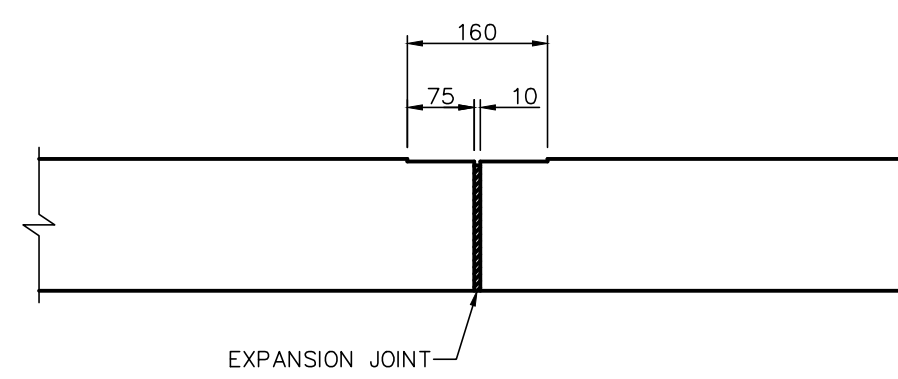
CURB DROP DETAIL

- NOTES:**
- MINIMUM CONCRETE DRIVEWAY SIDEWALK THICKNESS SHALL BE 150mm
 - DRIVEWAY LETDOWN TO BE BEDDED ON 100 COMPACTED THICKNESS OF 19 MINUS CRUSH GRAVEL COMPACTED TO 95% MODIFIED PROCTOR DENSITY.
 - COMMERCIAL, INDUSTRIAL, PARKING LOT ACCESS AND LANE ACCESS SHALL HAVE THE CURB REINFORCEMENT IN ACCORDANCE WITH TYPICAL NON MOUNTABLE CURB AND GUTTER DETAIL THIS SHEET.
 - BASE MATERIAL SHALL BE 100mm COMPACTED THICKNESS OF 19mm MINUS CRUSHED GRAVEL COMPACTED TO 95% MODIFIED PROCTOR.
 - DRIVEWAY SLOPE TO BE 8.6% DOWNWARDS AWAY FROM THE DRIVEWAY.
 - ALL DIMENSIONS ARE IN MILLIMETERS UNLESS OTHERWISE NOTED.

TYPICAL DRIVEWAY LETDOWN DETAIL N.T.S.



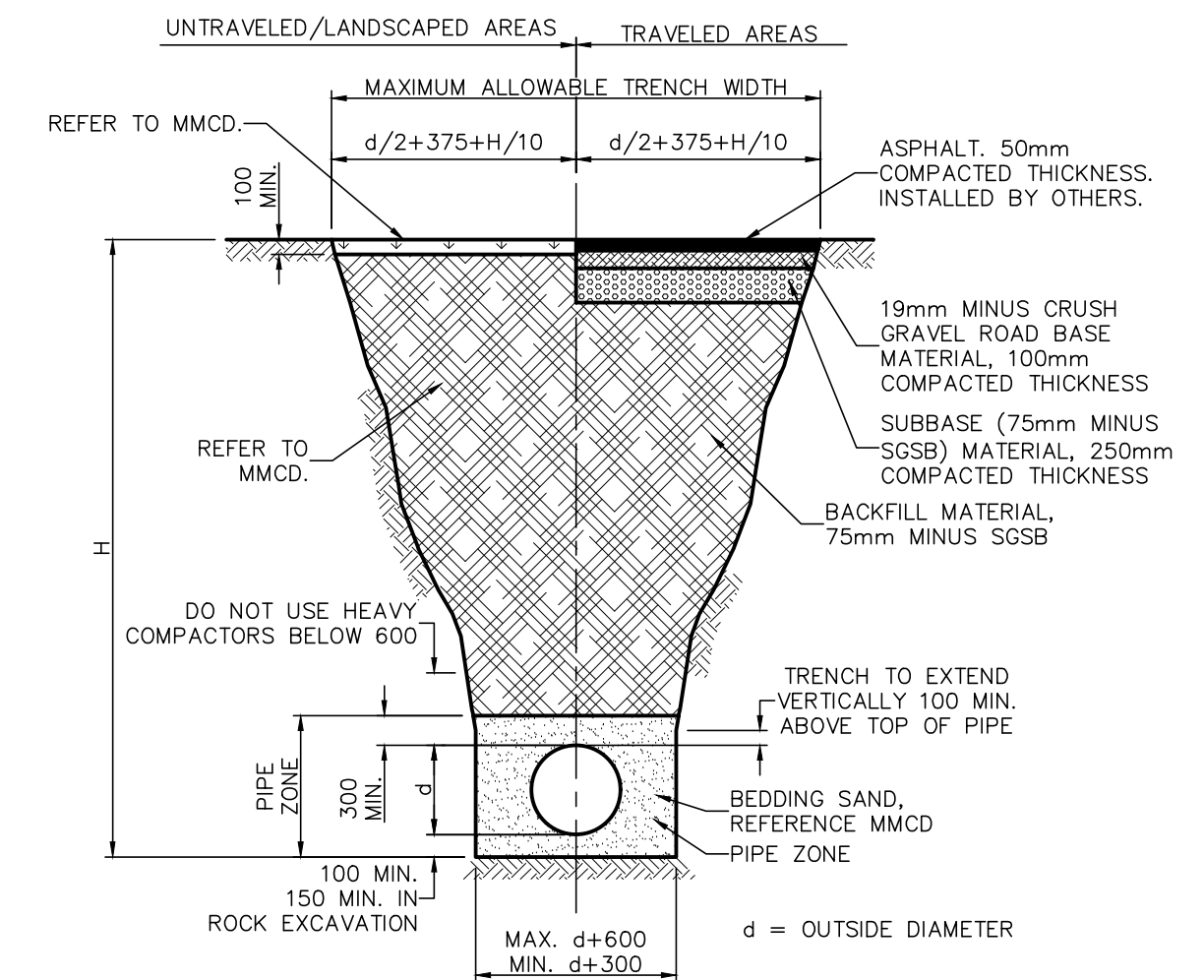
SIDEWALK PLAN VIEW



SIDEWALK PLAN PROFILE VIEW

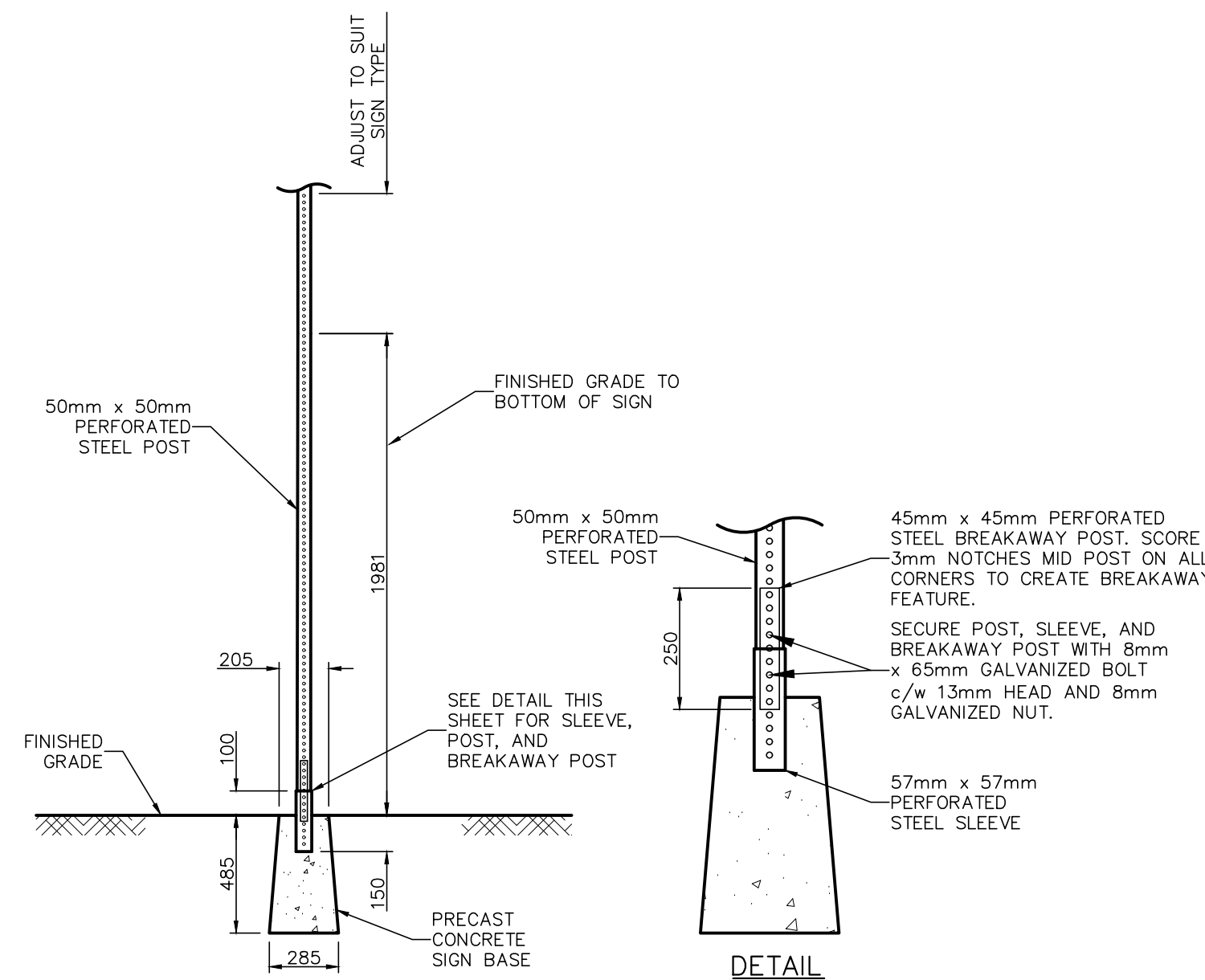
- NOTES:**
- FOR DRIVEWAY LETDOWN, SEE DETAIL THIS SHEET
 - SIDEWALKS SHALL HAVE BROOMED FINISH.
 - CURB AND GUTTER, REFERENCE MMCD FOR SUBSTRUCTURE.
 - SIDEWALK THICKNESS TO BE 100mm
 - ALL DIMENSIONS ARE IN MILLIMETERS UNLESS OTHERWISE NOTED.

TYPICAL SIDEWALK DETAIL N.T.S.



TYPICAL TRENCH DETAIL N.T.S.

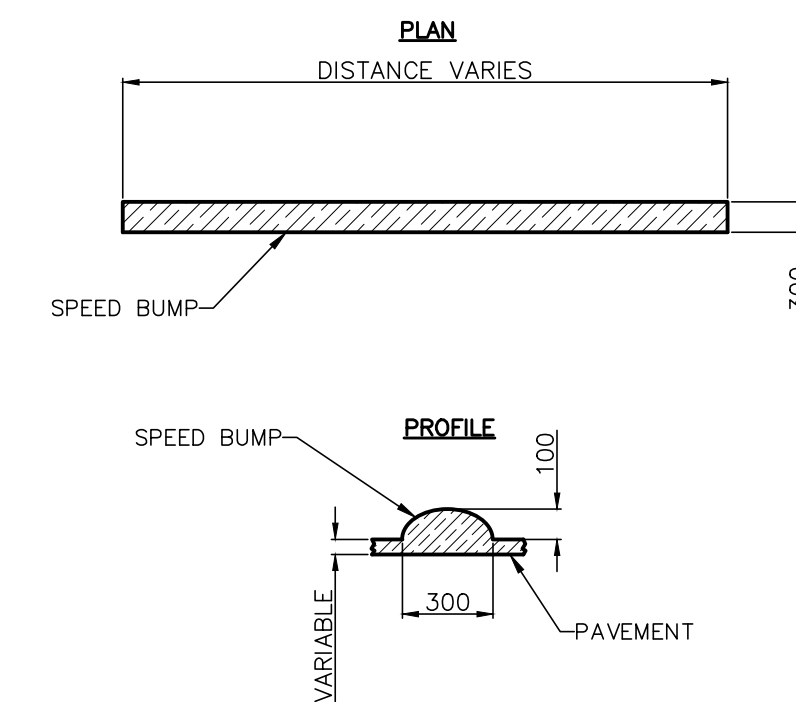
- NOTES:**
- BEDDING SAND, SUBBASE, AND BASE GRANULAR FILL WITHIN TRAVELED AREAS ARE TO BE COMPACTED TO 95% MODIFIED PROCTOR DENSITY.
 - BEDDING SAND, SUBBASE, AND BASE GRANULAR FILL WITHIN UNTRAVELED/LANDSCAPED AREAS ARE TO BE COMPACTED TO 90% MODIFIED PROCTOR DENSITY.
 - ALL DIMENSIONS ARE IN MILLIMETERS UNLESS OTHERWISE NOTED.



DETAIL N.T.S.

- NOTES:**
- SIGN TYPE AND LOCATION AS PER DESIGN DRAWINGS.
 - ALL DIMENSIONS ARE IN MILLIMETERS UNLESS OTHERWISE NOTED.

SIGN POST AND BASE DETAIL N.T.S.



- NOTES:**
- MATERIAL TO BE ASPHALT, REFERENCE MMCD SPECIFICATIONS VOLUME II 2009 EDITION FOR ASPHALT SPECIFICATIONS.
 - SHAPE OF SPEED BUMP TO SUIT ROAD CONDITIONS I.E. ROAD CROWN, CURVES AND GRADE.
 - SPEED BUMP TO BE PAINTED, REFERENCE MMCD FOR PAINT TYPE.
 - IN AREAS WHERE THE ROAD HAS CURB AND GUTTER, THE SPEED BUMP EDGE IS TO END AT THE EDGE OF THE GUTTER PAN/EDGE OF ASPHALT OR AS SHOWN ON THE DESIGN DRAWINGS.
 - ALL DIMENSIONS ARE IN MILLIMETERS UNLESS OTHERWISE SHOWN

TYPICAL INTEGRAL SPEED BUMP DETAIL N.T.S.

LEGEND	PROPOSED	WATERMAIN	WATERMAIN BLOW OFF	STORM MANHOLE	SANITARY LINE BREAK	WATERMAIN	ARV	CATCH BASIN	LINE BREAK	DESIGNED BY:	SHD/JP	APPROVED BY:	JP	SCALE	
		WATER SERVICE	WATERMAIN CAP	STORM CAP	SANITARY MANHOLE	WATER SERVICE METER	FIRE HYDRANT	SANITARY MAIN	FENCE	DRAWN BY:	SHD	DESIGN START DATE:	2021-10-04	HZ. SCALE:	1:150
	WATER VALVE	WATERMAIN LINE BREAK	STORM LINE BREAK	SANITARY SERVICE	WATER SERVICE	WATERMAIN BLOW OFF	WATERMAIN BLOW OFF	SANITARY SERVICE	UTILITY POLE AND ANCHOR	CHECKED BY:	JP	CURRENT DATE:	2021-10-04	VT. SCALE:	N/A
	WATERMAIN REDUCER	STORM MAIN	INLET/OUTLET/HEADWALL	CONCRETE	WATER VALVE	STORM MAIN	STORM MAIN	MANHOLE	SIGN	REVISIONS					
	WATERMAIN COUPLER	STORM CLEANOUT	SANITARY MAIN	GUTTER LINE	WATERMAIN REDUCER	STORM SERVICE	STORM SERVICE	CLEANOUT	GUTTER LINE	REV#	DATE	DESCRIPTION	BY		
	FIRE HYDRANT	STORM SERVICE	SANITARY CLEANOUT	ELEVATION	WATERMAIN COUPLER	INLET/OUTLET/HEADWALL	WATERMAIN COUPLER	CAP	WATER COURSE	R9	2021-12-15	ISSUED FOR RFD	SHD		
	ARV	CATCH BASIN	SANITARY CAP	GRADE	GAS	BC HYDRO	TELUS	SCALE OF LEDGEND: NTS		R8	2021-12-01	ISSUED FOR IRRIGATION AND STREETLIGHT UPDATE	SHD		



CITY OF DUNCAN	FILE NUMBER:	2020.010
CANADA AVENUE NEW PARKING LOT	SHEET:	5 OF 5
STANDARD DETAILS	REVISION NO.	R9
	DRAWING:	C05
	DWG FILE:	2020.010 - R9 DP