

# CITY OF DUNCAN

## TRANS CANADA HIGHWAY AND JAMES STREET INTERSECTION WATERMAIN UPGRADE MARCH 2022

**GENERAL NOTES:**

1. THE CITY OF DUNCAN REFERENCES MMCD PLATINUM EDITION VOLUME II 2009 CONSTRUCTION SPECIFICATIONS. UNLESS OTHERWISE SPECIFIED HEREIN, THE CITY OF DUNCAN RESERVES THE RIGHT TO MODIFY/ALTER ANY MMCD SPECIFICATION TO SUIT THE CITY OF DUNCAN.
2. IT IS THE SOLE RESPONSIBILITY OF THE CONTRACTOR TO REINSTATE ANY SURFACE WORKS OR UNDERGROUND UTILITIES INCLUDING IRRIGATION LINES AND TRAFFIC CONTROL LOOPS TO EXISTING OR BETTER CONDITION IF DAMAGED BY THE CONTRACTOR OR SUBCONTRACTOR DUE TO CONSTRUCTION.
3. THE LOCATION OF EXISTING UNDERGROUND UTILITIES HAVE BEEN COMPILED FROM DIFFERENT SOURCES AND ARE APPROXIMATE ONLY. EXACT LOCATION IS UNKNOWN AND MUST BE CONFIRMED PRIOR TO CONSTRUCTION. THE CITY ACCEPTS NO RESPONSIBILITY FOR THE ACCURACY OF THE INFORMATION SHOWN.
4. LINE PAINTING RESTORATION BY MOTI
5. CONTRACTOR TO COMPLY WITH ALL ENVIRONMENTAL, FISHERIES, LEGISLATION, REGULATIONS AND CITY OF DUNCAN BY-LAWS DURING CONSTRUCTION.
6. NOT ALL, IF ANY, EXISTING STRUCTURES OR LANDSCAPING ARE SHOWN. CONTRACTOR TO IDENTIFY ANY DESIGN CONFLICTS WITH STRUCTURES AND/OR LANDSCAPING PRIOR TO INSTALLATION. IF ANY DESIGN CONFLICTS ARE FOUND THE CONTRACTOR IS TO CONTACT THE CITY OF DUNCAN PROJECT MANAGER IMMEDIATELY.
7. ANY MATERIALS, INCLUDING BUT NOT LIMITED TO SOIL, ORGANIC WASTE, PARTS, CONCRETE, ETC. TO BE REMOVED AS A PART OF CONSTRUCTION IS TO BE DISPOSED OF OFF SITE AT THE CONTRACTORS EXPENSE.
8. CONTRACTOR IS RESPONSIBLE FOR RECORDING ALL ACTUAL SITE CONDITIONS.
9. ANY NON-EMERGENCY ASSISTANCE FROM THE CITY OF DUNCAN'S PUBLIC WORKS CREW REQUIRES 2 WEEKS NOTICE.

**WATER**

1. THE MINIMUM DEPTH OF COVER ON WATER SERVICES SHALL BE 1.2m UNLESS OTHERWISE PERMITTED BY THE CITY OF DUNCAN.
2. ALL BENDS SHALL BE JOINT RESTRAINED BY MECHANICAL MEANS AND NOT THRUST BLOCKED.
3. ALL SERVICES ARE TO BE 19mm MST 200 POLY UNLESS OTHERWISE NOTED.
4. WHERE THE WATERMAIN IS CLOSER THAN 3m HORIZONTALLY OR HAS LESS THAN 45cm CLEARANCE VERTICALLY THAN ALL SANITARY OR STORM MAINS, THE WATERMAIN JOINTS ARE TO BE WRAPPED WITH DENSO TAPE.
5. 14 GAUGE SOLID BLUE TRACER WIRE IS TO BE INSTALLED ON WATERMAIN.
6. CONTRACTOR IS NOT PERMITTED TO OPERATE ANY EXISTING VALVES (GATE OR OTHER) THAT ARE ON THE LIVE WATER DISTRIBUTION SYSTEM. CONTRACTOR TO COORDINATE ANY LIVE SYSTEM APPURTENANCES WITH 2 WEEKS NOTICE.
7. CONTRACTOR SHALL CONDUCT A PRESSURE TEST IN ACCORDANCE WITH CITY OF DUNCAN ENGINEERING SPECIFICATIONS AND IN THE PRESENCE OF CITY OF DUNCAN PERSONNEL.
8. CONTRACTOR SHALL FLUSH AND DISINFECT WATER MAINS IN ACCORDANCE WITH AWWA STANDARDS AND AS APPROVED BY CITY OF DUNCAN. WATER SAMPLES FOR HEALTH TESTS TO BE COLLECTED AND PROCESSED BY CONTRACTOR IN THE PRESENCE OF CITY OF DUNCAN PERSONNEL.
9. CONTRACTOR TO MAKE ALL CONNECTIONS TO EXISTING WATER MAINS IN THE PRESENCE OF CITY OF DUNCAN WATER OPERATOR WITH MINIMUM 7 DAY NOTICE.

**BACKFILL MATERIAL**

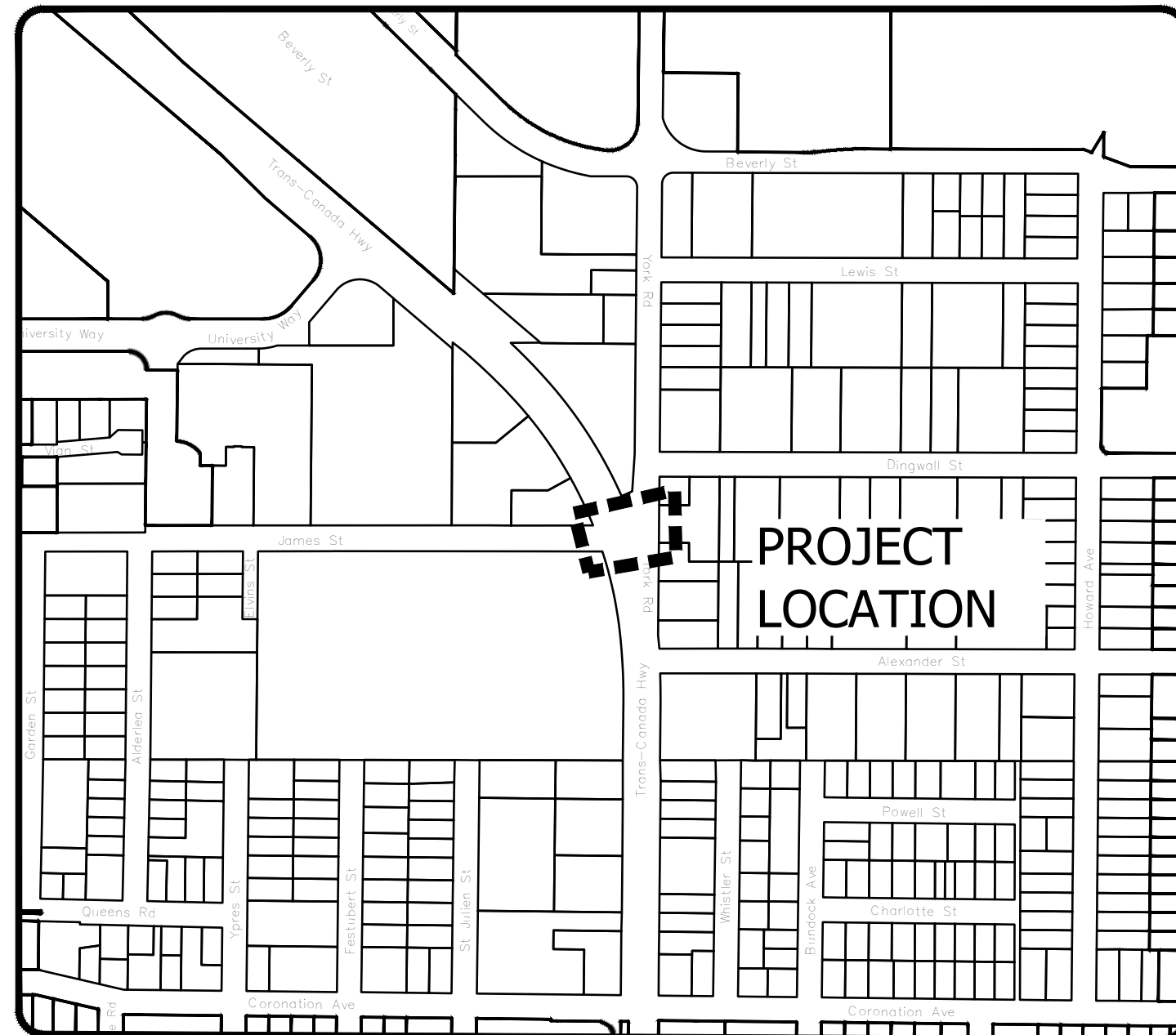
10. ALL BACKFILL MATERIALS ARE TO BE IN ACCORDANCE WITH MMCD PLATINUM EDITION VOLUME II 2009 CONSTRUCTION SPECIFICATIONS.
11. ALL COMPACTION IS TO BE COMPLETED IN ACCORDANCE WITH MMCD PLATINUM EDITION VOLUME II 2009 CONSTRUCTION SPECIFICATIONS.
12. PROOF ROLL TRENCH MATERIAL AS PER MMCD SPECIFICATIONS, HOWEVER A SINGLE AXLE DUMP TRUCK IS TO BE USED. THE DUMP TRUCK IS TO HAVE A REAR AXLE LOAD OF 8000kg AND A TIRE PRESSURE OF 550 kpa.

**ELECTRICAL**

13. ALL ELECTRICAL WORK IS TO BE COMPLETED IN ACCORDANCE TO THE MOST CURRENT APPLICABLE VERSION OF THE ELECTRICAL CODE.

**PERMIT NUMBERS**

MoTi: \_\_\_\_\_  
ISLAND HEALTH: W-S-2464

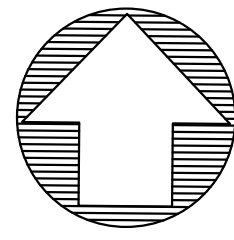


**DRAWING INDEX**

- C01 - TITLE SHEET
- C02 - WATERMAIN PLAN
- C03 - WATERMAIN PROFILE
- C04 - DETAILS

LEGEND	PROPOSED				EXISTING				DESIGNED BY: JP			APPROVED BY: JP			SCALE		SEAL	CITY OF DUNCAN	CITY OF DUNCAN	FILE NUMBER: 2014.002							
	WATERMAIN	WATERMAIN BLOW OFF	STORM MANHOLE	SANITARY LINE BREAK	WATERMAIN	ARV	CATCH BASIN	LINE BREAK	DESIGNED BY:	CMD	DESIGN START DATE:	2022/02	HZ. SCALE:	1:250	DESIGNED BY:	CMD					APPROVED BY:	JP	DESIGN START DATE:	2022/02	VT. SCALE:	1:25	CITY OF DUNCAN
	WATER SERVICE	WATERMAIN CAP	STORM CAP	SANITARY MANHOLE	WATER SERVICE METER	FIRE HYDRANT	SANITARY MAIN	FENCE	WATER SERVICE	WATERMAIN BLOW OFF	SANITARY SERVICE	UTILITY POLE AND ANCHOR	REV#	DATE	DESCRIPTION	BY											
	WATER VALVE	WATERMAIN LINE BREAK	STORM LINE BREAK	SANITARY SERVICE	WATER VALVE	WATERMAIN BLOW OFF	SANITARY SERVICE	UTILITY POLE AND ANCHOR	WATERMAIN REDUCER	WATERMAIN BLOW OFF	SANITARY SERVICE	UTILITY POLE AND ANCHOR	R6	2022/03	ISSUED FOR QUOTATION	CMD											
	WATERMAIN REDUCER	STORM MAIN	INLET/OUTLET/HEADWALL	CONCRETE	WATERMAIN REDUCER	STORM MAIN	MANHOLE	SIGN	WATERMAIN COUPLER	STORM CLEANOUT	SANITARY MAIN	GUTTER LINE	R5	2022/02	ISSUED FOR APPROVAL	CMD											
	FIRE HYDRANT	STORM SERVICE	SANITARY CLEANOUT	ELEVATION	WATERMAIN COUPLER	INLET/OUTLET/HEADWALL	CAP	WATER COURSE	ARV	CATCH BASIN	LINE BREAK	SCALE OF LEGGEND: NTS	R4	2022/02	BACKFILL MATERIAL TYPE AND WATERMAIN PROFILE	CMD											
													R3	2022/02	ALIGNMENT FINALIZATION AND MATERIAL TYPE CHANGE	CMD											
													R2	2022/01	WATERMAIN ALIGNMENT ALTERATIONS	CMD											

c:\p\proj\2014\2014.002 - James Street Watermain Upgrade\2021\2014.002 - R6.dwg - R6.dwg - 01



TRANS CANADA HIGHWAY

5832 TRANS CANADA HWY

5835 YORK RD

5831 YORK RD

5827 YORK R

JAMES STREET

3+000

3+020

3+040

- 1-250x250x150 FxFxF TEE
- 1-250x250x100 FxFxF TEE
- 2-250 FxH GATE VALVE
- 1-250 SPOOL (LEN. TO SUIT)
- 1-250 CAP
- 1-150 FxH GATE VALVE
- 1-100 FxH GATE VALVE
- 3-THRUST BLOCK

PR. 100mmø C900 DR18 PVC WATER SERVICE

1-250 HxH 11.25' BEND

PR. 250mmø C900 DR18 PVC WATERMAIN

11.25' BEND

3+120 122

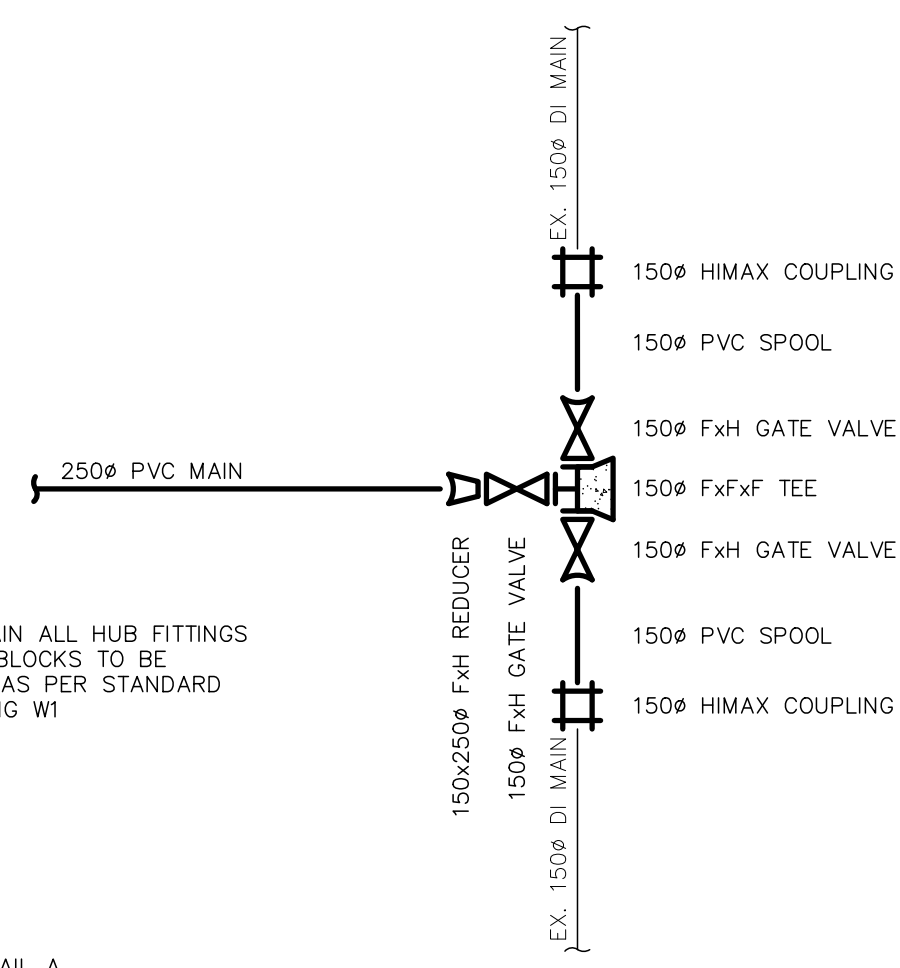
TIE-IN (SEE DETAIL A)  
 CREATE CONTINUOUS HYDRAULIC BARRIER FOR LENGTH OF WATERMAIN TIE-IN PLUS AN ADDITIONAL 300mm ON EITHER END USING 6mm POLYETHYLENE JOINTS TO OVERLAP NO LESS THAN 400mm AND BE SEALED USING ADHESIVE TAPE. BARRIER TO BE NO LESS THAN 300mm BELOW TRENCH AND EXTEND VERTICALLY NO LESS THAN THE OBVERT ELEVATION OF THE EXISTING STORM MAIN. POLYETHYLENE TO WRAP THE TRENCH AT THAT LOCATION SUCH THAT THE TRENCH HEIGHT IS PROTECTED.

5825 YORK RD

5821 YORK RD

5817 YORK RD

TRAFFIC LOOPS TO BE REINSTITATED WITHIN 48 HRS AFTER DISRUPTION



- JOINT RESTRAIN ALL HUB FITTINGS
- ALL THRUST BLOCKS TO BE INSTALLED AS PER STANDARD MMCD DRAWING W1

TIE-IN DETAIL A  
N.T.S.

GENERAL NOTES:

- ALL DIMENSIONS ARE IN METRES UNLESS OTHERWISE NOTED.
- LOCATIONS OF THIRD PARTY UTILITIES ARE APPROXIMATE ONLY. CONTRACTOR TO VERIFY LOCATION IN THE FIELD. AND REPORT ANY DESIGN CONFLICTS TO THE CITY.
- CONTRACTOR TO REMOVE AND REPLACE JAMES STREET TRAFFIC LOOPS AS REQUIRED.

LEGEND	PROPOSED				EXISTING			
	WATERMAIN	WATER SERVICE	WATER VALVE	WATERMAIN REDUCER	WATERMAIN COUPLER	FIRE HYDRANT	WATERMAIN COUPLER	GAS
WATERMAIN	WATERMAIN BLOW OFF	WATERMAIN CAP	WATERMAIN LINE BREAK	WATERMAIN REDUCER	WATERMAIN COUPLER	FIRE HYDRANT	WATERMAIN COUPLER	GAS
WATER SERVICE	WATERMAIN CAP	WATERMAIN LINE BREAK	WATERMAIN REDUCER	WATERMAIN COUPLER	WATERMAIN COUPLER	WATERMAIN BLOW OFF	WATERMAIN COUPLER	WATERMAIN COUPLER
WATER VALVE	WATERMAIN LINE BREAK	WATERMAIN REDUCER	WATERMAIN COUPLER	WATERMAIN COUPLER	WATERMAIN COUPLER	WATERMAIN BLOW OFF	WATERMAIN COUPLER	WATERMAIN COUPLER
WATERMAIN REDUCER	WATERMAIN LINE BREAK	WATERMAIN REDUCER	WATERMAIN COUPLER	WATERMAIN COUPLER	WATERMAIN COUPLER	WATERMAIN BLOW OFF	WATERMAIN COUPLER	WATERMAIN COUPLER
WATERMAIN COUPLER	WATERMAIN LINE BREAK	WATERMAIN REDUCER	WATERMAIN COUPLER	WATERMAIN COUPLER	WATERMAIN COUPLER	WATERMAIN BLOW OFF	WATERMAIN COUPLER	WATERMAIN COUPLER
FIRE HYDRANT	WATERMAIN LINE BREAK	WATERMAIN REDUCER	WATERMAIN COUPLER	WATERMAIN COUPLER	WATERMAIN COUPLER	WATERMAIN BLOW OFF	WATERMAIN COUPLER	WATERMAIN COUPLER
ARV	WATERMAIN LINE BREAK	WATERMAIN REDUCER	WATERMAIN COUPLER	WATERMAIN COUPLER	WATERMAIN COUPLER	WATERMAIN BLOW OFF	WATERMAIN COUPLER	WATERMAIN COUPLER
STORM MANHOLE	STORM CAP	STORM LINE BREAK	INLET/OUTLET/HEADWALL	SANITARY MAIN	SANITARY MAIN	STORM MANHOLE	STORM SERVICE	INLET/OUTLET/HEADWALL
SANITARY LINE BREAK	SANITARY MANHOLE	SANITARY SERVICE	CONCRETE	GUTTER LINE	ELEVATION	SCALE OF LEGGEND: NTS	SCALE OF LEGGEND: NTS	SCALE OF LEGGEND: NTS
SANITARY MANHOLE	SANITARY SERVICE	CONCRETE	GUTTER LINE	ELEVATION	SCALE OF LEGGEND: NTS	SCALE OF LEGGEND: NTS	SCALE OF LEGGEND: NTS	SCALE OF LEGGEND: NTS
SANITARY SERVICE	CONCRETE	GUTTER LINE	ELEVATION	SCALE OF LEGGEND: NTS	SCALE OF LEGGEND: NTS	SCALE OF LEGGEND: NTS	SCALE OF LEGGEND: NTS	SCALE OF LEGGEND: NTS
CONCRETE	GUTTER LINE	ELEVATION	SCALE OF LEGGEND: NTS	SCALE OF LEGGEND: NTS	SCALE OF LEGGEND: NTS	SCALE OF LEGGEND: NTS	SCALE OF LEGGEND: NTS	SCALE OF LEGGEND: NTS
GUTTER LINE	ELEVATION	SCALE OF LEGGEND: NTS	SCALE OF LEGGEND: NTS	SCALE OF LEGGEND: NTS	SCALE OF LEGGEND: NTS	SCALE OF LEGGEND: NTS	SCALE OF LEGGEND: NTS	SCALE OF LEGGEND: NTS
ELEVATION	SCALE OF LEGGEND: NTS	SCALE OF LEGGEND: NTS	SCALE OF LEGGEND: NTS	SCALE OF LEGGEND: NTS	SCALE OF LEGGEND: NTS	SCALE OF LEGGEND: NTS	SCALE OF LEGGEND: NTS	SCALE OF LEGGEND: NTS
SCALE OF LEGGEND: NTS	SCALE OF LEGGEND: NTS	SCALE OF LEGGEND: NTS	SCALE OF LEGGEND: NTS	SCALE OF LEGGEND: NTS	SCALE OF LEGGEND: NTS	SCALE OF LEGGEND: NTS	SCALE OF LEGGEND: NTS	SCALE OF LEGGEND: NTS

DESIGNED BY: JP	APPROVED BY: JP	SCALE	
DRAWN BY: CMD	DESIGN START DATE: 2022/02	HZ. SCALE: 1:250	
CHECKED BY: JP	CURRENT DATE: 2022/02	VT. SCALE: 1:25	
REV#	DATE	DESCRIPTION	BY
R6	2022/03	ISSUED FOR QUOTATION	CMD
R5	2022/02	ISSUED FOR APPROVAL	CMD
R4	2022/02	BACKFILL MATERIAL TYPE AND WATERMAIN PROFILE	CMD
R3	2022/02	ALIGNMENT FINALIZATION AND MATERIAL TYPE CHANGE	CMD
R2	2022/01	WATERMAIN ALIGNMENT ALTERATIONS	CMD

SEAL	CITY OF DUNCAN
200 CRAIG STREET DUNCAN, BC V9L 3Y2	JAMES STREET WATERMAIN UPGRADE TCH INTERSECTION
FILE NUMBER: 2014.002	SHEET: 2 OF 4
REVISION NO. R6	DRAWING: C02
DWG FILE: 2014.002 - R6.DWG	

SEAL	CITY OF DUNCAN
200 CRAIG STREET DUNCAN, BC V9L 3Y2	JAMES STREET WATERMAIN UPGRADE TCH INTERSECTION
FILE NUMBER: 2014.002	SHEET: 2 OF 4
REVISION NO. R6	DRAWING: C02
DWG FILE: 2014.002 - R6.DWG	

SEAL	CITY OF DUNCAN
200 CRAIG STREET DUNCAN, BC V9L 3Y2	JAMES STREET WATERMAIN UPGRADE TCH INTERSECTION
FILE NUMBER: 2014.002	SHEET: 2 OF 4
REVISION NO. R6	DRAWING: C02
DWG FILE: 2014.002 - R6.DWG	

SEAL	CITY OF DUNCAN
200 CRAIG STREET DUNCAN, BC V9L 3Y2	JAMES STREET WATERMAIN UPGRADE TCH INTERSECTION
FILE NUMBER: 2014.002	SHEET: 2 OF 4
REVISION NO. R6	DRAWING: C02
DWG FILE: 2014.002 - R6.DWG	

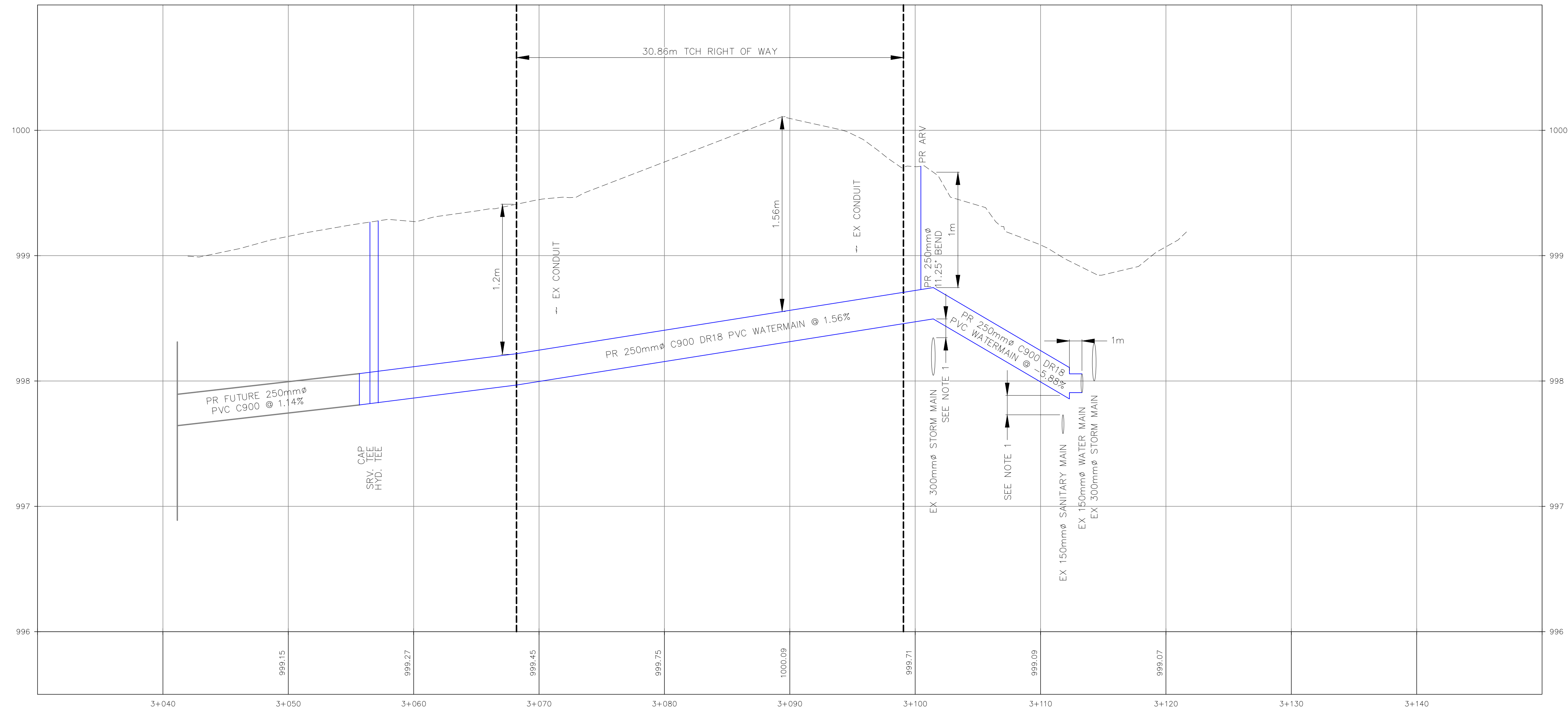
SEAL	CITY OF DUNCAN
200 CRAIG STREET DUNCAN, BC V9L 3Y2	JAMES STREET WATERMAIN UPGRADE TCH INTERSECTION
FILE NUMBER: 2014.002	SHEET: 2 OF 4
REVISION NO. R6	DRAWING: C02
DWG FILE: 2014.002 - R6.DWG	

SEAL	CITY OF DUNCAN
200 CRAIG STREET DUNCAN, BC V9L 3Y2	JAMES STREET WATERMAIN UPGRADE TCH INTERSECTION
FILE NUMBER: 2014.002	SHEET: 2 OF 4
REVISION NO. R6	DRAWING: C02
DWG FILE: 2014.002 - R6.DWG	

SEAL	CITY OF DUNCAN
200 CRAIG STREET DUNCAN, BC V9L 3Y2	JAMES STREET WATERMAIN UPGRADE TCH INTERSECTION
FILE NUMBER: 2014.002	SHEET: 2 OF 4
REVISION NO. R6	DRAWING: C02
DWG FILE: 2014.002 - R6.DWG	

c:\p\9228m [T:\\_PROJETS\LCIT OF DUNCAN\2014\2014.002 - James Street Watermain Upgrade\2021\2014.002 - R6.dwg - 02]

PR WM Alignment 3+000 PROFILE



GENERAL NOTES:

1. MINIMUM VERTICAL SEPARATION TO BE 0.15m AND PIPE ZONE TO BE CONTROL DENSITY FILL (CDF) TO 1m EITHER SIDE OF CROSSING.

LEGEND	PROPOSED				EXISTING			
	WATERMAIN	WATER SERVICE	WATER VALVE	WATERMAIN COUPLER	FIRE HYDRANT	ARV	CATCH BASIN	LINE BREAK
	WATERMAIN	WATER SERVICE	WATER VALVE	WATERMAIN COUPLER	FIRE HYDRANT	ARV	CATCH BASIN	LINE BREAK
	WATERMAIN BLOW OFF	WATERMAIN CAP	WATERMAIN LINE BREAK	STORM MAIN	STORM CLEANOUT	STORM SERVICE	INLET/OUTLET/HEADWALL	SANITARY MAIN
	STORM MANHOLE	STORM CAP	STORM LINE BREAK	SANITARY MAIN	SANITARY CLEANOUT	SANITARY CAP	SANITARY LINE BREAK	SANITARY MANHOLE
	CONCRETE	GUTTER LINE	ELEVATION	GRADE	CONCRETE	GUTTER LINE	ELEVATION	GRADE

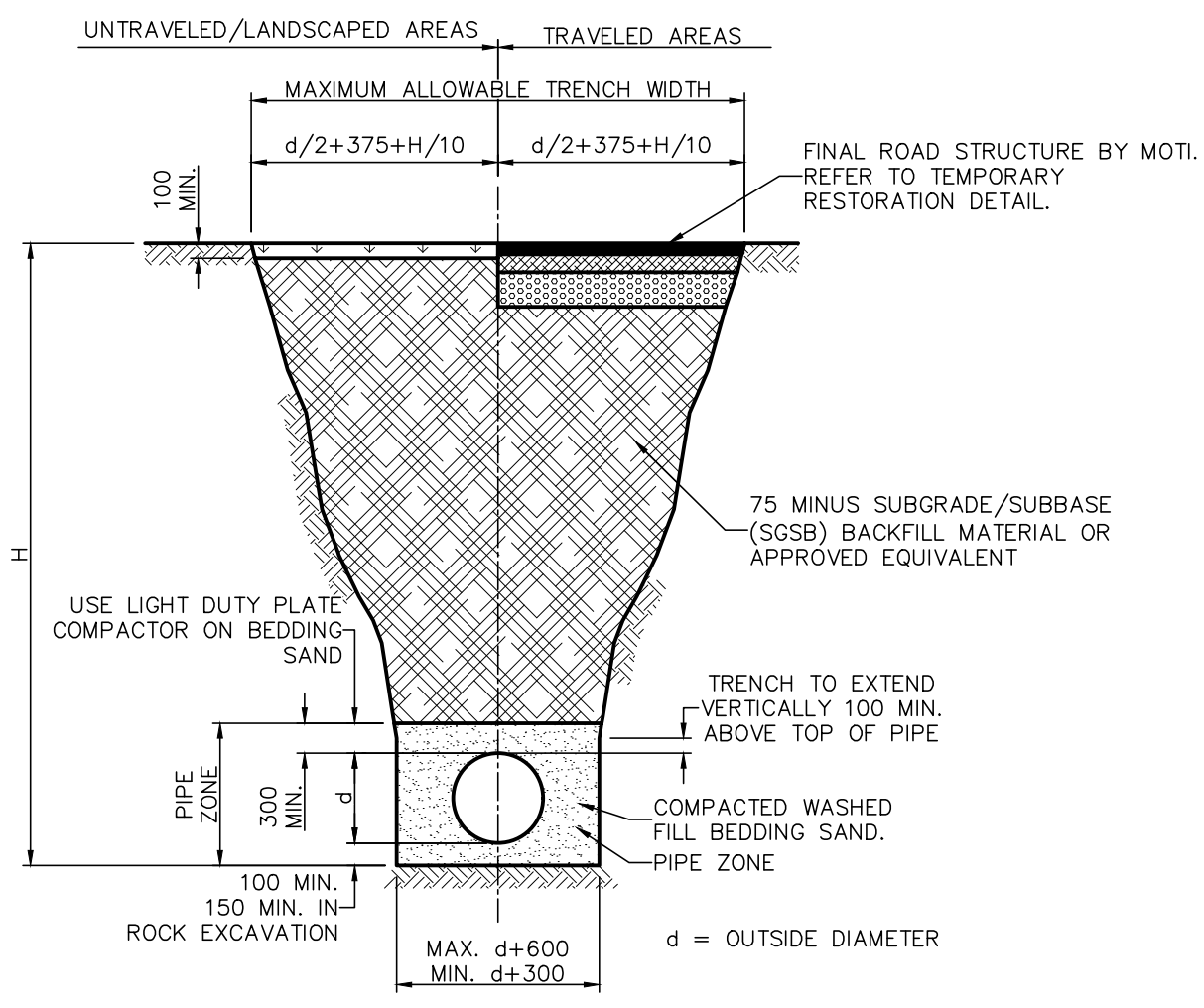
DESIGNED BY:	APPROVED BY:	SCALE
JP	JP	HZ. SCALE: 1:250 VT. SCALE: 1:25
DRAWN BY: CMD	DESIGN START DATE: 2022/02	
CHECKED BY: JP	CURRENT DATE: 2022/02	

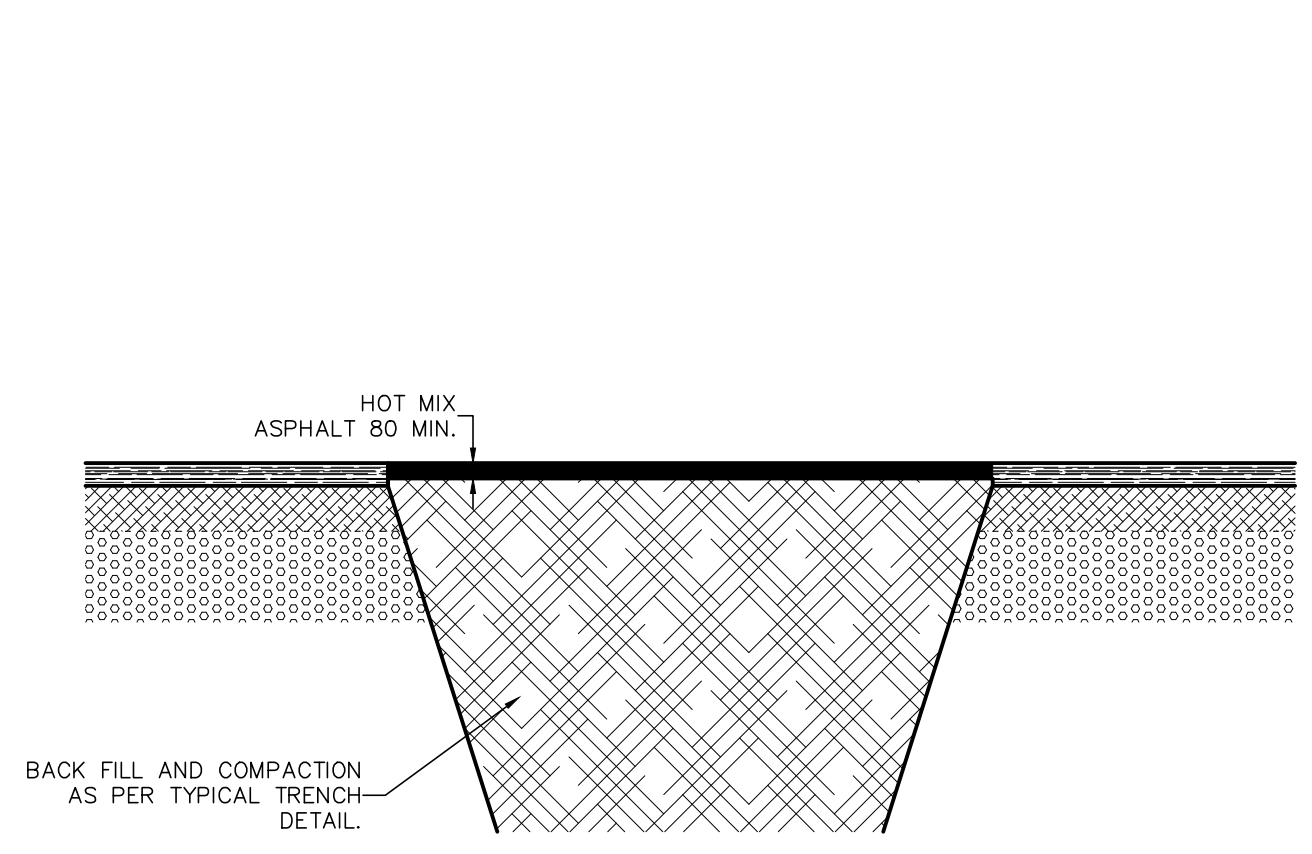
REV#	DATE	DESCRIPTION	BY
R6	2022/03	ISSUED FOR QUOTATION	CMD
R5	2022/02	ISSUED FOR APPROVAL	CMD
R4	2022/02	BACKFILL MATERIAL TYPE AND WATERMAIN PROFILE	CMD
R3	2022/02	ALIGNMENT FINALIZATION AND MATERIAL TYPE CHANGE	CMD
R2	2022/01	WATERMAIN ALIGNMENT ALTERATIONS	CMD

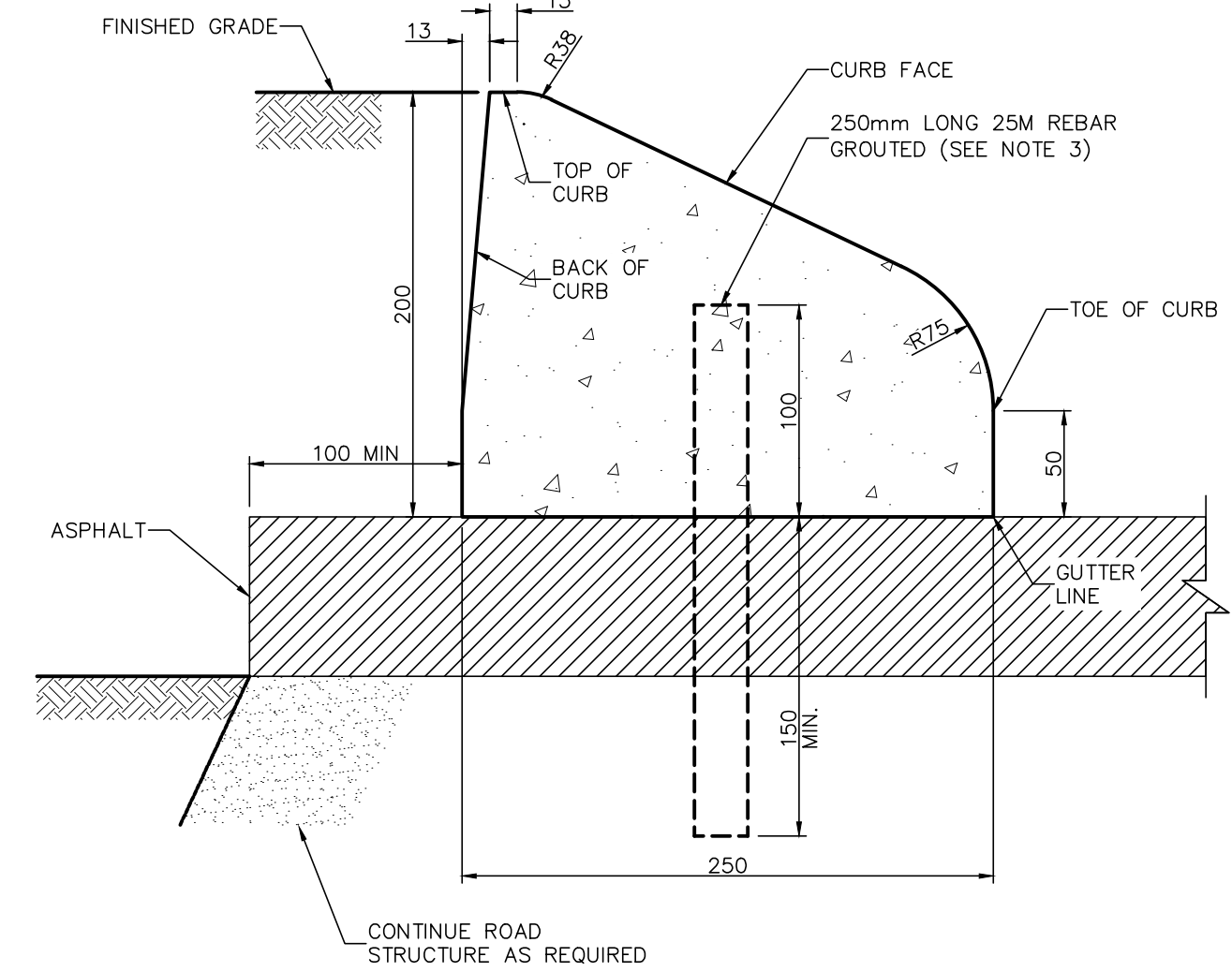
SEAL	CITY OF DUNCAN 200 CRAIG STREET DUNCAN, BC V9L 3Y2	CITY OF DUNCAN JAMES STREET WATERMAIN UPGRADE TCH INTERSECTION WATERMAIN PROFILE	FILE NUMBER: 2014.002 SHEET: 3 OF 4 REVISION NO: R6 DRAWING: C03 DWG FILE: 2014.002 - R6.DWG
------	---	---	--



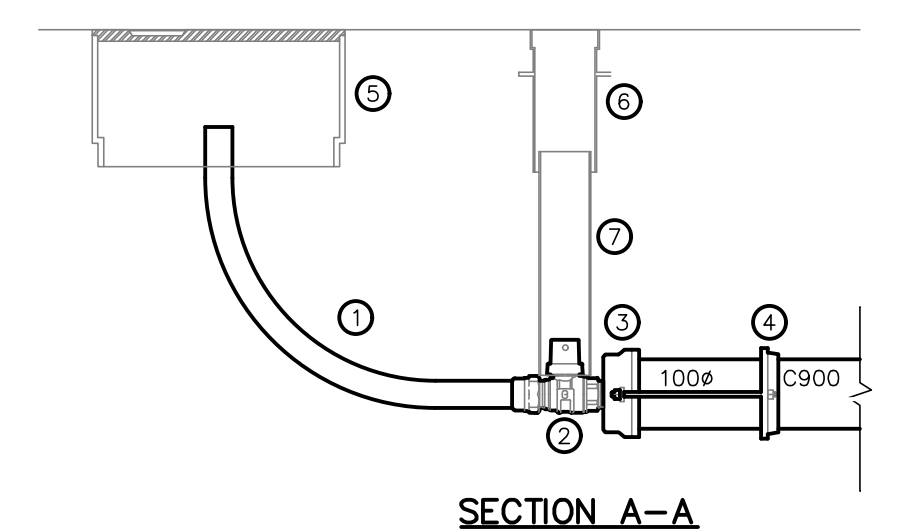
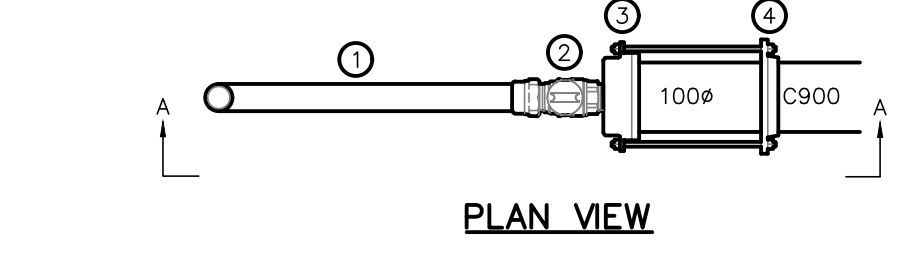
**NOTES:**  
 1. BEDDING SAND, SUBBASE, AND BASE GRANULAR FILL WITHIN TRAVELED AREAS ARE TO BE COMPACTED TO 95% MODIFIED PROCTOR DENSITY.  
 2. BEDDING SAND, SUBBASE, AND BASE GRANULAR FILL WITHIN UNTRAVELED/LANDSCAPED AREAS ARE TO BE COMPACTED TO 90% MODIFIED PROCTOR DENSITY.  
 3. ALL APPROVED EQUIVALENT GRANULAR MATERIAL MUST BE REVIEWED A GEOTECHNICAL ENGINEER.  
 4. ALL DIMENSIONS ARE IN MILLIMETERS UNLESS OTHERWISE NOTED.



**NOTES:**  
 1. ALL APPROVED EQUIVALENT GRANULAR MATERIAL MUST BE REVIEWED A GEOTECHNICAL ENGINEER.  
 2. MOTI TO PERFORM FINAL MILL AND PAVE WORK AFTER CONSTRUCTION IS COMPLETE.  
 3. ALL DIMENSIONS ARE IN MILLIMETERS UNLESS OTHERWISE NOTED.



**NOTES:**  
 1. IF DETAIL IS USED IN CONJUNCTION WITH PERPENDICULAR OR ANGULAR PARKING, WHEEL STOPS IN FRONT OF THE CURB ARE REQUIRED. DESIGN AND DISTANCE OF WHEEL STOP FROM THE CURB TO BE SPECIFIED BY DESIGN ENGINEER.  
 2. ISLAND/MEDIAN CURBS TO BE PLACED ON ASPHALT.  
 3. INSTALL 25M REBAR @ 300 CENTER TO CENTER FROM B.C. TO E.C. OF ALL TRAFFIC ISLAND CORNERS.  
 4. THE LENGTH OF TRANSITION FROM ONE TYPE OF CURB TO ANOTHER SHALL BE 1.0m.  
 5. ALL DIMENSIONS ARE IN MILLIMETERS UNLESS OTHERWISE NOTED.



**NOTES:**  
 1. ALL DIMENSIONS IN MILLIMETERS UNLESS NOTED OTHERWISE.  
 2. ONLY PRODUCTS APPROVED BY THE CITY ENGINEER WILL BE ACCEPTED FOR INSTALLATION.  
 3. SEE CITY OF DUNCAN APPROVED PRODUCTS LIST FOR ALL APPROVED INSTALLATION PARTS.  
 4. IN TRAVELED AREAS A CONCRETE BOX SHALL BE INSTALLED. IN LANDSCAPED AREAS A PLASTIC BOX SHALL BE INSTALLED.  
 5. QUANTITY OF THRUST RESTRAINTS TO ENSURE THE SUBSEQUENT LENGTHS OF MAIN ARE SECURE.  
 6. INSTALL ALL PARTS AND MATERIALS SHOWN IN ACCORDANCE WITH MANUFACTURERS SPECIFICATIONS AND ALL OTHER APPLICABLE STANDARD DETAILS HEREIN.

**QUANTITY MATERIAL LIST**

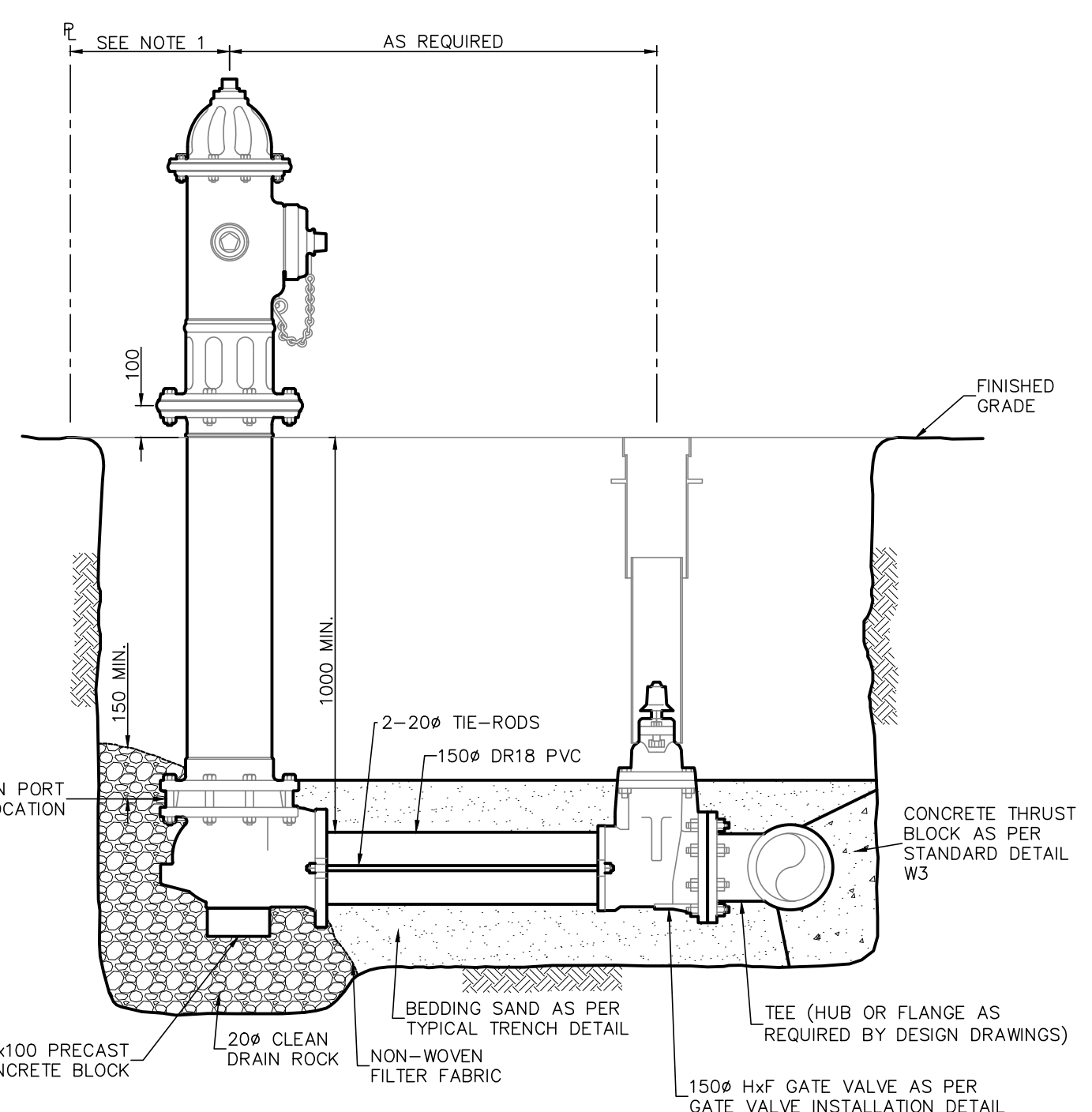
1	50# POLYETHYLENE MST200, LENGTH TO SUIT
2	50# CcXIP STOP AND DRAIN
3	100mm DI CAP WITH 50# IP TAP
4	WATERMAIN THRUST RESTRAINT
5	WATER METER BOX
6	NELSON BOX
7	PVC RISER, LENGTH TO SUIT

TYPICAL TRENCH DETAIL N.T.S.

TEMPORARY PAVEMENT RESTORATION DETAIL N.T.S.

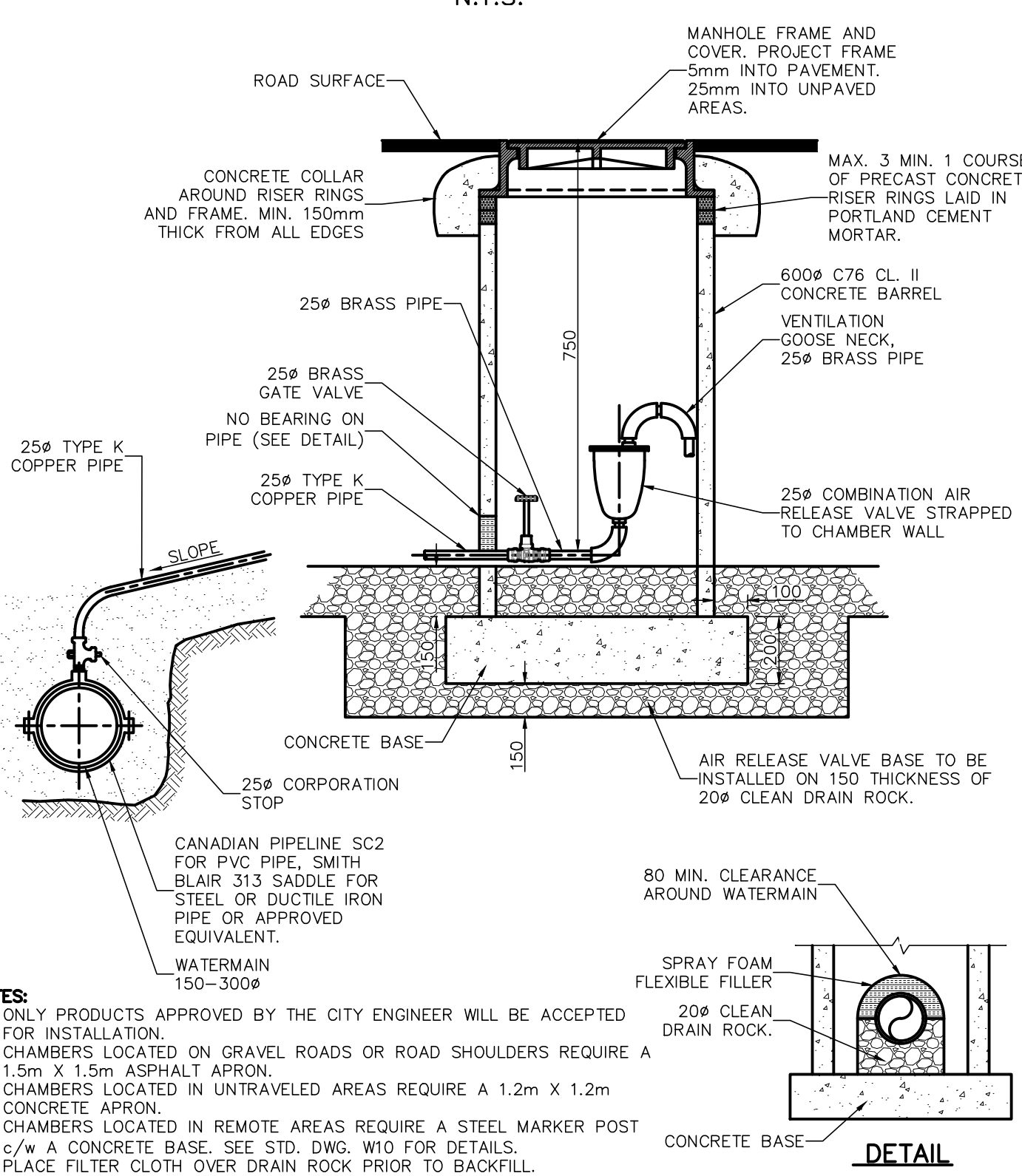
ISLAND CURB DETAIL N.T.S.

100mm END OF LINE BLOW OFF DETAIL N.T.S.



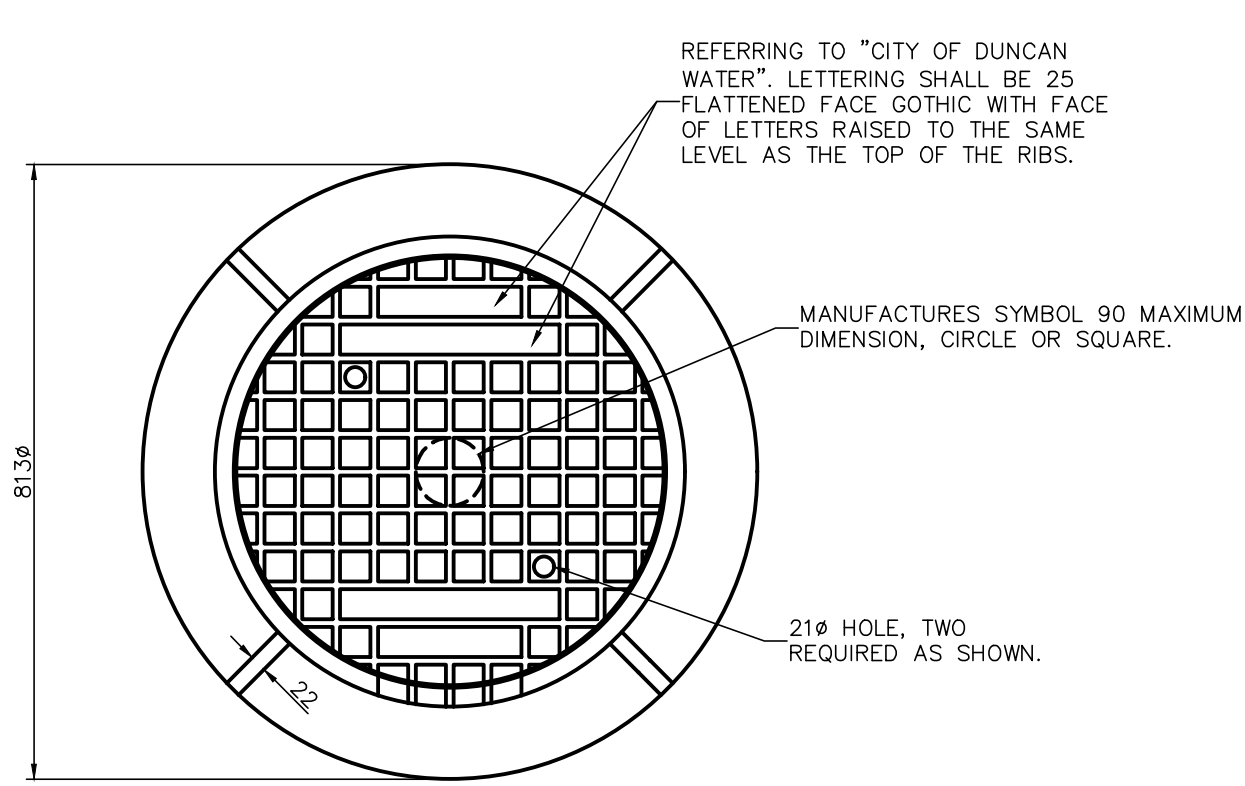
**NOTES:**  
 1. HOSE AND PUMPER NOZZLE MUST FACE CURB.  
 2. HYDRANT FLANGES SHALL BE SET 100mm ABOVE A POINT 2% UP FROM THE TOP OF THE BACK OF CURB.  
 3. ONLY PRODUCTS APPROVED BY THE ENGINEER WILL BE ACCEPTED FOR INSTALLATION.  
 4. 2-20# TIE-RODS OR AS SPECIFIED. FOR DISTANCES GREATER THAN 3.0m ALL JOINTS FROM WATER MAIN TO HYDRANT TO BE RESTRAINED.  
 5. ALL DIMENSIONS ARE IN MILLIMETERS UNLESS OTHERWISE NOTED.

TYPICAL FIRE HYDRANT DETAIL N.T.S.

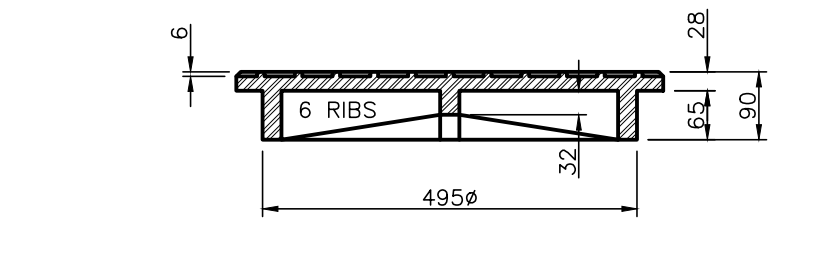


**NOTES:**  
 1. ONLY PRODUCTS APPROVED BY THE CITY ENGINEER WILL BE ACCEPTED FOR INSTALLATION.  
 2. CHAMBERS LOCATED ON GRAVEL ROADS OR ROAD SHOULDERS REQUIRE A 1.5m X 1.5m ASPHALT APRON.  
 3. CHAMBERS LOCATED IN UNTRAVELED AREAS REQUIRE A 1.2m X 1.2m CONCRETE APRON.  
 4. CHAMBERS LOCATED IN REMOTE AREAS REQUIRE A STEEL MARKER POST c/w A CONCRETE BASE. SEE STD. DWG. W10 FOR DETAILS.  
 5. PLACE FILTER CLOTH OVER DRAIN ROCK PRIOR TO BACKFILL.  
 6. CHAMBER MUST BE SELF DRAINING.  
 7. ALL DIMENSIONS ARE IN MILLIMETERS UNLESS OTHERWISE NOTED.

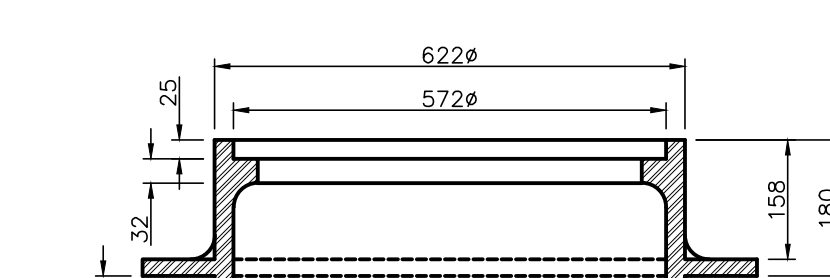
OFFSET AIR RELEASE VALVE DETAIL N.T.S.



PLAN



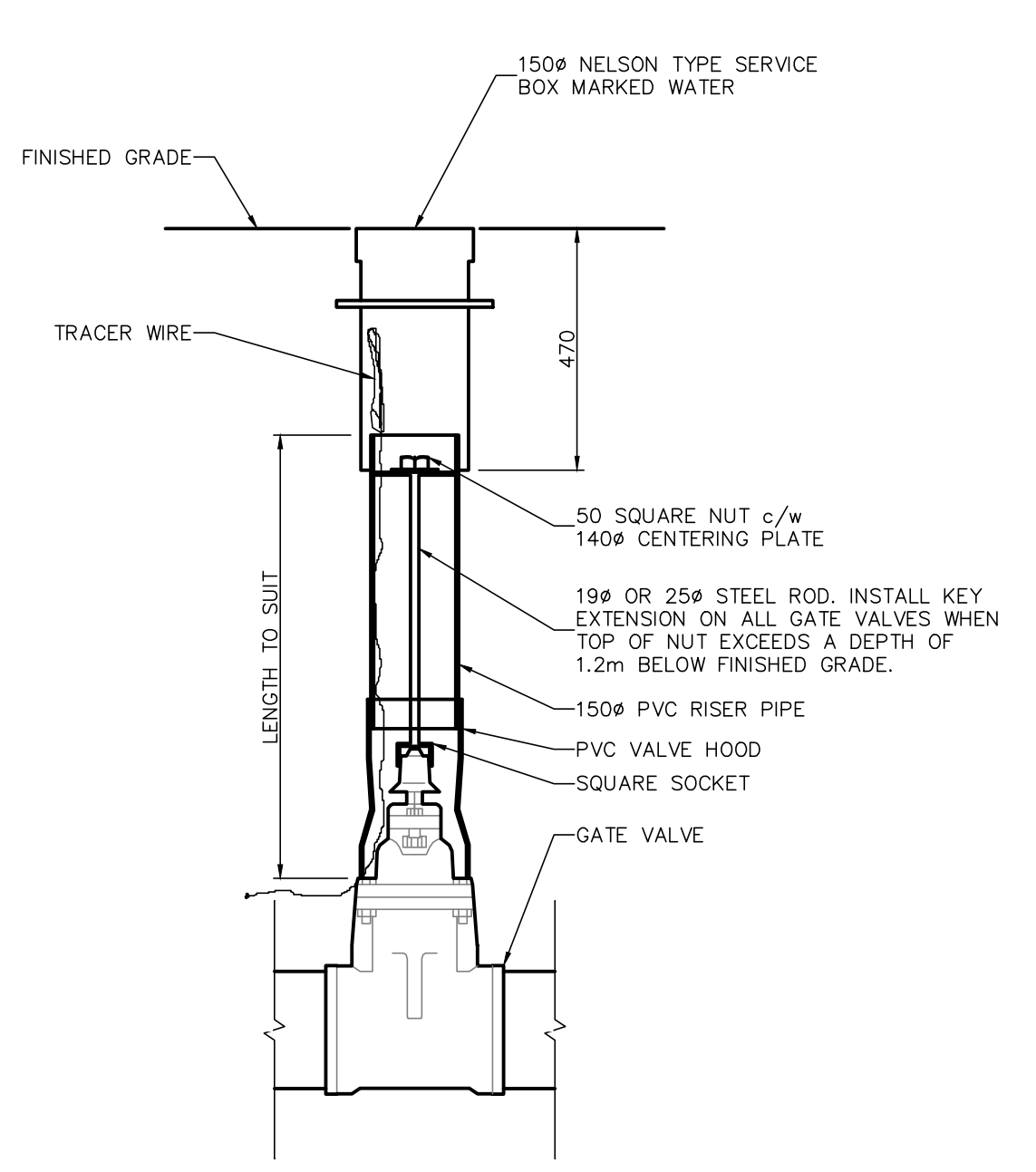
COVER



FRAME

MANHOLE FRAME AND COVER DETAIL N.T.S.

**NOTES:**  
 1. ALL CASTINGS SHALL BE CERTIFIED TO MEET CS600 REQUIREMENTS.  
 2. ALL METAL BEARING SURFACES BETWEEN FRAME, COVER AND RISER RINGS MACHINED FOR NON ROCKING FIT IN ALL POSITIONS, ALLOW 1.5 RAISED FACE IN CASTING FOR MACHINING.  
 3. ONLY PRODUCTS APPROVED BY THE CITY ENGINEER WILL BE ACCEPTED FOR INSTALLATION.  
 4. ALL DIMENSIONS ARE IN MILLIMETERS UNLESS OTHERWISE NOTED.



**NOTES:**  
 1. ONLY PRODUCTS APPROVED BY THE CITY ENGINEER WILL BE ACCEPTED FOR INSTALLATION.  
 2. VALVES LOCATED ON GRAVEL ROADS OR ROAD SHOULDERS REQUIRE A 1.5m X 1.5m ASPHALT APRON.  
 3. VALVES LOCATED IN UNTRAVELED AREAS REQUIRE A 1.2m X 1.2m CONCRETE APRON.  
 4. 150# RISER PIPE SHALL BE DR-18 PVC IN TRAVELED AND UNTRAVELED AREAS.  
 5. TRACER WIRE TO ENTER RISER AT VALVE BODY AND EXCESS TO BE BUNDLED NEATLY AT WITHIN VALVE BOX IN SUCH A MANNER AS TO NOT INTERFERE WITH VALVE OPERATION OR PROPER LID CLOSURE.  
 6. ALL DIMENSIONS ARE IN MILLIMETERS UNLESS OTHERWISE NOTED.

GATE VALVE INSTALLATION DETAIL N.T.S.

LEGEND	PROPOSED	EXISTING	REVISIONS
WATERMAIN	—	—	—
WATER SERVICE	—	—	—
WATER VALVE	—	—	—
WATERMAIN REDUCER	—	—	—
WATERMAIN COUPLER	—	—	—
FIRE HYDRANT	—	—	—
ARV	—	—	—

LEGEND	PROPOSED	EXISTING	REVISIONS
WATERMAIN	—	—	—
WATER SERVICE	—	—	—
WATER VALVE	—	—	—
WATERMAIN REDUCER	—	—	—
WATERMAIN COUPLER	—	—	—
GAS	—	—	—

DESIGNED BY:	APPROVED BY:	SCALE
JP	JP	HZ. SCALE: 1:250 VT. SCALE: 1:25
CMD		
JP		

REV#	DATE	DESCRIPTION	BY
R6	2022/03	ISSUED FOR QUOTATION	CMD
R5	2022/02	ISSUED FOR APPROVAL	CMD
R4	2022/02	BACKFILL MATERIAL TYPE AND WATERMAIN PROFILE	CMD
R3	2022/02	ALIGNMENT FINALIZATION AND MATERIAL TYPE CHANGE	CMD
R2	2022/01	WATERMAIN ALIGNMENT ALTERATIONS	CMD

SEAL
SCALE



CITY OF DUNCAN	FILE NUMBER:
JAMES STREET WATERMAIN UPGRADE TCH INTERSECTION	2014.002
DETAILS	SHEET: 4 OF 4
	REVISION NO. R6
	DRAWING: C04
	DWG FILE: 2014.002 - R6.DWG