

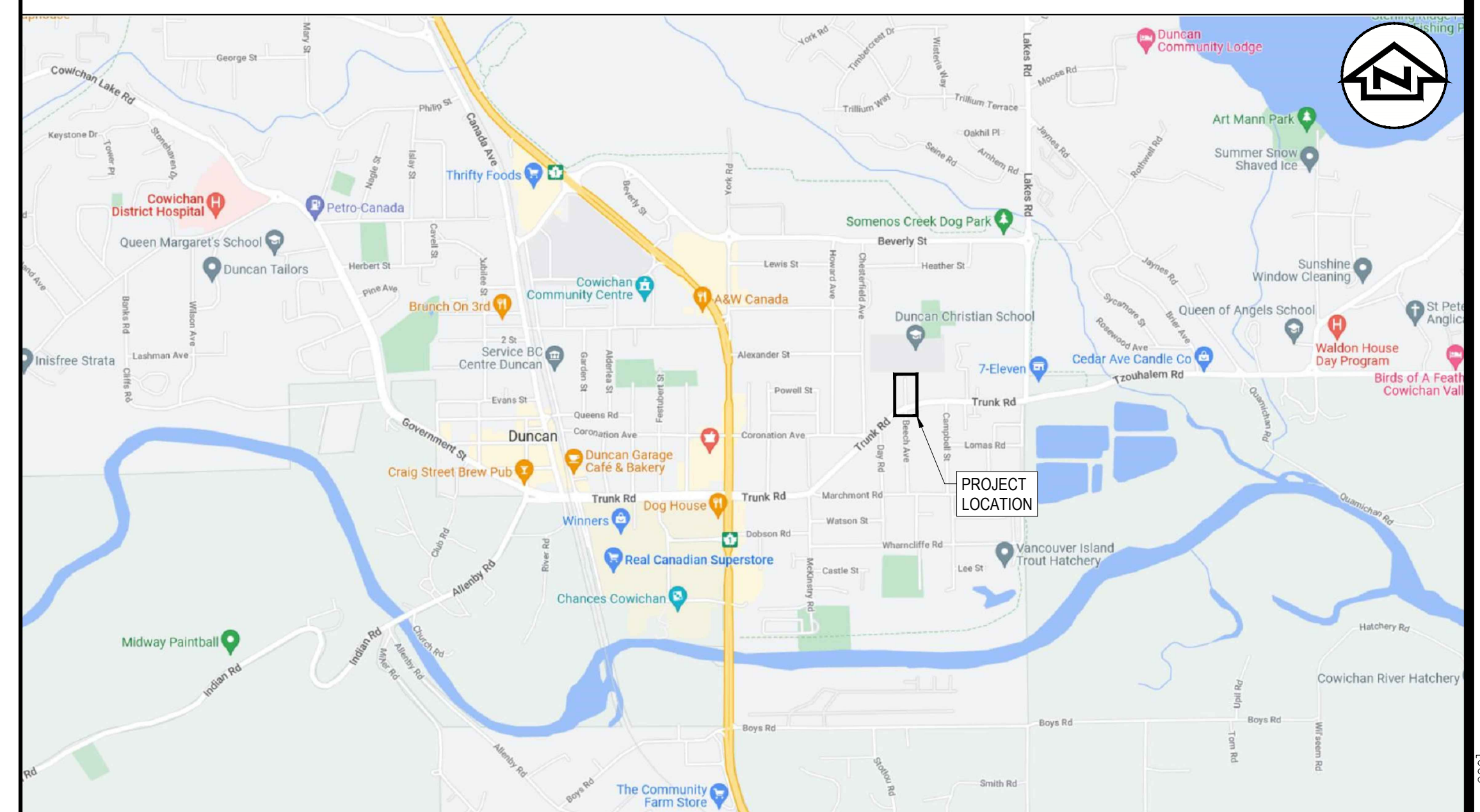
# CITY OF DUNCAN

## NORTH BEECH AVE RENEWAL PROJECT

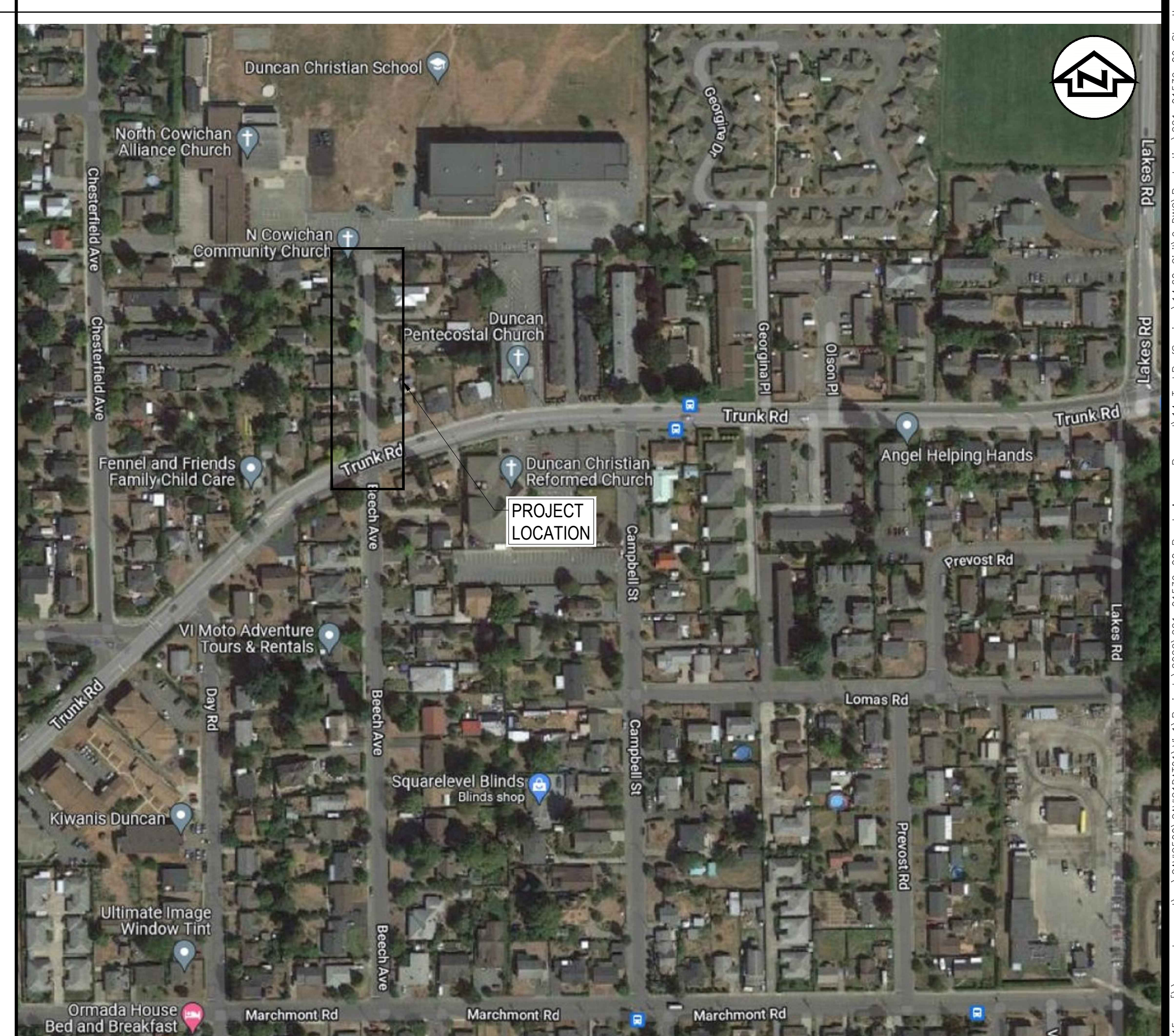
221-01539-00



LOCATION PLAN



KEY PLAN



DRAWING INDEX

TITLE	DWG NO.	ISS/REV	SHEET NO.
COVER SHEET AND GENERAL NOTES	G00	R2	1
SANITARY AND STORM DRAIN PLAN PROFILE	C01	R2	2
WATER MIAN PLAN PROFILE	C02	R2	3
SURFACE WORKS AND DETAILS	C03	R2	4

GENERAL NOTES

- GENERAL NOTES:**
- ALL CONSTRUCTION AND MATERIALS TO BE IN ACCORDANCE WITH THE MOST CURRENT CITY OF DUNCAN ENGINEERING SPECIFICATIONS, MMCD SPECIFICATIONS AND DETAILS, AND THESE DRAWINGS.
  - ALL PRODUCTS TO BE IN ACCORDANCE WITH CITY OF DUNCAN APPROVED PRODUCTS LIST. CONTRACTOR SHALL BE SOLELY RESPONSIBLE FOR CONSTRUCTION MEANS, METHODS, TECHNIQUES, SEQUENCES AND PROCEDURES AND FOR CO-ORDINATING THE VARIOUS PARTS OF THE WORK.
  - EXISTING SERVICES SHOWN ON THIS DRAWING ARE APPROXIMATE ONLY AND CANNOT BE GUARANTEED FOR ACCURACY. CONTRACTOR TO CONFIRM LOCATION OF ALL EXISTING SERVICES IN THE FIELD PRIOR TO CONSTRUCTION.
  - A PERMIT AND SECURITY DEPOSIT ARE REQUIRED FOR WORKS WITHIN A MUNICIPAL ROAD ALLOWANCE AND/OR MUNICIPAL RIGHT OF WAY AND MUST BE OBTAINED BEFORE WORKS COMMENCE. NOTIFY CITY OF DUNCAN 48 HOURS PRIOR TO CONSTRUCTION.
  - MAINTAIN VEHICULAR ACCESS TO EXISTING LOTS.
  - CAREFULLY RELOCATE EXISTING LANDSCAPE FEATURES, TRAFFIC SIGNS AND SITE FEATURES TO ACCOMMODATE CONSTRUCTION WORK. ALL EXISTING WORKS TO BE RETURNED TO AS FOUND OR BETTER CONDITION.
  - A PERMIT TO CONSTRUCT WORKS ADJACENT TO BOULEVARD OR BY-LAW PROTECTED TREES MUST BE OBTAINED FROM CITY OF DUNCAN BEFORE WORKS COMMENCE. ARBORIST REQUIRED WHEN WORK IS INSIDE CRITICAL ROOT ZONE OF BOULEVARD TREES AND PRIVATE BY-LAW PROTECTED TREES.
  - CONTACT BC-1 (1-800-474-8888), BC HYDRO, SHAW CABLE, AND FORTIS GAS FOR UNDERGROUND UTILITY LOCATIONS PRIOR TO CONSTRUCTION.
  - DISPOSE OF ALL EXCAVATED MATERIAL UNSUITABLE FOR REUSE AT A SUITABLE OFF-SITE DISPOSAL AREA, IN ACCORDANCE WITH ALL APPLICABLE REGULATIONS.
  - ALL ELEVATIONS ARE METRIC GEODETIC.
  - ANY UNSCHEDULED UTILITY SERVICE DISRUPTIONS TO BE RECTIFIED IN A TIMELY MANNER. CONTRACTOR TO KEEP STANDARD REPAIR COMPONENTS ON SITE AT ALL TIMES. CONTRACTOR TO IMMEDIATELY NOTIFY CITY OF DUNCAN REPRESENTATIVE OF ANY UNSCHEDULED UTILITY SERVICE DISRUPTION.
- ROAD AND TRAFFIC CONTROL NOTES:**
- ALL TRAFFIC CONTROL TO CONFORM TO MOST CURRENT WORKSAFE BC, MMCD, AND MINISTRY OF TRANSPORTATION SPECIFICATIONS (TRAFFIC CONTROL MANUAL FOR WORK ON ROADWAYS), AND THESE DRAWINGS.
  - PRIOR TO CONSTRUCTION, CONTRACTOR TO PREPARE AND SUBMIT A TRAFFIC CONTROL PLAN TO CITY OF DUNCAN FOR ACCEPTANCE. DOCUMENT TO INCLUDE DETAILS OF ALL WORK SITES AND LANE CLOSURE REQUIREMENTS.
  - PROVIDE TRAFFIC CONTROL, SIGNAGE, BARRICADES AND ILLUMINATION, AND DETOUR ROUTING AS REQUIRED TO MAINTAIN TRAFFIC FLOW AND EMERGENCY VEHICLE ACCESS. ALL FLAG PERSONS TO HAVE PROOF OF CERTIFICATION. FLAG PERSONS ARE STRICTLY REQUIRED WHEN THERE IS ONLY ONE OPEN LANE OF TRAFFIC.
  - AT THE END OF EVERY DAY, EXCAVATIONS SHALL BE COVERED WITH STEEL TRAFFIC PLATES SUITABLE FOR VEHICULAR TRAFFIC (MINIMUM H20 LOADING) WHEREVER POSSIBLE.
  - 24 HOUR EMERGENCY CONTACT INFORMATION FOR CONTRACTOR REPRESENTATIVE TO BE PROVIDED TO CITY OF DUNCAN.
  - CITY OF DUNCAN TO BE ADVISED OF ROUTING FOR DETOURS, IF REQUIRED, PRIOR TO ACCEPTANCE.
  - CONTRACTOR TO CONFORM TO CITY OF DUNCAN CONSTRUCTION NOISE RESTRICTIONS OUTLINED IN CITY BYLAW 3156.
  - ALL ROADS ARE KEPT CLEAN OF DEBRIS ON A REGULAR BASIS.
  - ALL EXISTING ASPHALT TO BE CUT SQUARE WITH ASPHALT SAW.
- SANIDRN NOTES:**
- CONSTRUCTION TO BE UNDERTAKEN USING BEST MANAGEMENT PRACTICES FOR STORMWATER TREATMENT. CONTRACTOR IS RESPONSIBLE TO PREPARE AND FOLLOW A SILT ABATEMENT PLAN WHICH WILL PREVENT CONTAMINATED WATER FROM ENTERING THE STORM SYSTEM, OVERLAND DRAINAGES, CREEKS AND WETLAND AREAS.
  - CATCHBASINS AND MANHOLE COVERS TO HAVE GEOTEXTILE PLACED BETWEEN FRAME AND GRATINGS TO REDUCE INFLOW OF SEDIMENT UNTIL SITE IS PAVED AND LANDSCAPED. CONTRACTOR TO CLEAN/REPLACE GEOTEXTILE AS REQUIRED TO ACHIEVE FLOW INTO CATCHBASINS.
  - ALL MANHOLES TO BE 1050mm DIAMETER, UNLESS OTHERWISE NOTED.
  - SANITARY AND DRAIN MAINS TO BE FLUSHED AND VIDEO INSPECTED BY CONTRACTOR.
  - CONNECTION TO EXISTING SANITARY AND DRAIN MAINS TO BE UNDER CITY OF DUNCAN SUPERVISION.
  - EXISTING SERVICES MUST BE EXPOSED AT CROSSING AND TIE-IN POINTS PRIOR TO CONSTRUCTION FOR GRADE CHECK.
  - PIPES THAT ARE TO BE ABANDONED SHALL BE SAW-CUT A MINIMUM OF 1.5m FROM EXISTING CONNECTION WITH ENDS CAPPED AND ENCASED IN CONCRETE. REMOVE/FILL ALL REDUNDANT CASTINGS ONCE TURNOVER IS COMPLETE.

- WATER NOTES:**
- ALL WATERMANS TO BE TO BE DUCTILE IRON PRESSURE CLASS 350.
  - ALL WATERMANS FITTINGS TO BE DUCTILE IRON TO AWWA C153, MINIMUM PRESSURE RATING: 235PSI.
  - ALL VALVES TO BE GATE VALVES, MIN. PRESSURE RATING 250 PSI.
  - NEW SERVICE LINES TO BE INSTALLED TO EACH LOT. CONNECT TO EXISTING METER SETTERS AFTER NEW WATERMAIN IS IN SERVICE.
  - A MINIMUM OF 3m HORIZONTAL CLEAR SEPARATION AND 450mm CLEAR VERTICAL SEPARATION SHALL BE MAINTAINED BETWEEN WATER SERVICES AND ALL SANITARY SEWER AND DRAIN SERVICES. WHERE A SANITARY OR STORM DRAIN SERVICE IS LOWER THAN THE WATER SERVICE BY MORE THAN 450mm IN ELEVATION THE HORIZONTAL OFFSET MAY BE REDUCED TO NO LESS THAN 1.0m. ISLAND HEALTH APPROVAL IS REQUIRED FOR ANY REDUCTION IN THE SEPARATION.
  - FOR CROSSING OF EXISTING SEWERS WHERE THE WATER MAIN DOES NOT HAVE THE REQUIRED 450mm VERTICAL SEPARATION, WRAP THE JOINTS WITH PETROLATUM TAPE 3.0m ON EITHER SIDE OF THE WATERMAIN.
  - A MINIMUM OF 1.5m CLEAR HORIZONTAL AND 150mm CLEAR VERTICAL SEPARATION SHALL BE MAINTAINED BETWEEN WATERMANS AND ELECTRICAL CONDUITS, GAS MAINS AND TELEPHONE CONDUITS.
  - A MINIMUM OF 1.0m HORIZONTAL CENTRE TO CENTRE AND 150mm CLEAR VERTICAL SEPARATION SHALL BE MAINTAINED BETWEEN WATER SERVICES AND ELECTRICAL, GAS AND TELEPHONE SERVICES.
  - WATER SERVICES 50mmØ AND LESS TO BE CROSSLINKED POLYETHYLENE (PEX) TO AWWA C904 & CSA B137.5, MINIMUM 19mmØ, UNLESS OTHERWISE NOTED.
  - ALL WATERMAIN FITTINGS MUST BE PIPE RESTRAINED WITH THRUST BLOCKS INSTALLED AT TEES.
  - REINSTATE ALL EXISTING WATER SERVICES AND ABANDON MAINS ONLY AFTER NEW WATERMAIN HAS BEEN APPROVED FOR USE.
  - CONTRACTOR TO CONDUCT PRESSURE TEST, FLUSH AND DISINFECT WATERMANS IN ACCORDANCE WITH MMCD AND AWWA STANDARDS IN THE PRESENCE OF ENGINEER OR REPRESENTATIVE. WATER SAMPLES FOR HEALTH TESTS TO BE COLLECTED AND PROCESSED BY CONTRACTOR.
  - NEUTRALIZE CHLORINE SOLUTIONS IN ACCORDANCE WITH MINISTRY OF THE ENVIRONMENT AND FISHERIES AND OCEANS PRIOR TO DISCHARGE TO ANY DRAINAGE COURSE.
  - CONNECTIONS TO EXISTING WATERMANS AND METERS TO BE BY CONTRACTOR UNDER THE SUPERVISION OF CITY OPERATIONS STAFF. CONTRACTOR SHALL PROVIDE 48 HOURS NOTICE FOR WORK BY CITY OF DUNCAN FORCES.
  - EXISTING SERVICES MUST BE EXPOSED AT CROSSING AND TIE-IN POINTS PRIOR TO CONSTRUCTION FOR GRADE CHECK.
  - PIPES THAT ARE TO BE ABANDONED SHALL BE SAW-CUT A MINIMUM OF 1.5m FROM EXISTING CONNECTION WITH ENDS CAPPED AND ENCASED IN CONCRETE. REMOVE/FILL ALL REDUNDANT CASTINGS ONCE TURNOVER IS COMPLETE.
  - ALL RESIDENTS TO BE NOTIFIED IN WRITING A MINIMUM OF 48 HOURS PRIOR TO ANY SCHEDULED WATER SERVICE OR ACCESS DISRUPTIONS. MAXIMUM SHUTDOWN 4 HOURS.
  - THE CONTRACTOR IS TO MEET THE CONDITIONS EXPRESSED IN THE WATERMAIN CONSTRUCTION PERMIT NO. XXXXXX ISSUED BY VANCOUVER ISLAND HEALTH AUTHORITY TO THE OWNER AND SHALL NOT COMMENCE WATERMAIN CONSTRUCTION WITHOUT A COPY OF SAID PERMIT. ANY FIELD CHANGES OR DEVIATIONS ARE TO BE PRE-APPROVED BY THE ISLAND HEALTH PUBLIC HEALTH ENGINEER THROUGH THE CONTRACT ADMINISTRATOR.
- GEOTECHNICAL TESTING FOR SITE WORKS:**
- THE CONTRACTOR WILL BE REQUIRED TO RETAIN AND PAY FOR THE SERVICES OF A QUALIFIED INDEPENDENT GEOTECHNICAL TESTING AGENCY UNDER THE SUPERVISION OF A REGISTERED PROFESSIONAL ENGINEER, AND PAY THE COST OF TESTING SERVICES FOR QUALITY CONTROL INCLUDING, BUT NOT LIMITED TO, THE FOLLOWING:
- SIEVE ANALYSIS OF SANDS AND AGGREGATES TO BE SUPPLIED, OR AS PROVIDED BY MATERIAL SUPPLIER
  - STANDARD PROCTOR DENSITY CURVES FOR BACKFILL MATERIALS
  - STANDARD PROCTOR DENSITY CURVES FOR APPROVED BORROW MATERIALS
  - REVIEW AND APPROVAL OF SUB-BASE AND SUBGRADE
  - COMPACTION CONTROL TESTS FOR BACKFILL AND EMBANKMENT MATERIAL TO BE TO A MINIMUM OF 95%MPD, INCLUDING THE FOLLOWING:
    - TRENCH BACKFILL - ONCE PER EVERY 25m OF TRENCH AT 0.5m VERTICAL LIFTS.
    - GRANULAR BASE (ROAD, CURBS AND SIDEWALKS) - ONCE PER 25 LINEAL METRES.
  - CONCRETE STRENGTH TESTS (MINIMUM THREE SPECIMEN CYLINDERS IN ACCORDANCE WITH CSA A23.1) FOR THE FOLLOWING:
    - CONCRETE SIDEWALKS - ONCE PER 100sq m (MIN. ONE PER DAY DURING CONCRETE PLACEMENT)
    - CURB AND GUTTER - ONCE PER 50 LINEAL METRES (MINIMUM ONE PER DAY DURING CONCRETE PLACEMENT)
    - CONCRETE DRIVEWAY CROSSINGS - ONE PER CROSSING
  - ASPHALT MIX DESIGNS AND TESTING INCLUDING THICKNESS AND COMPACTION
- THE CONTRACTOR IS TO COORDINATE DIRECTLY WITH THE GEOTECHNICAL ENGINEER AND PROVIDE ALL SUPPORTING DOCUMENTATION TO WSP FOR REVIEW AND ACCEPTANCE.

DESIGNED BY: BH	APPROVED BY: FM	SCALE		
DRAWN BY: SG	DESIGN START DATE: 2022/03	HZ. SCALE: X		
CHECKED BY: JCS	CURRENT DATE: 2022/07	VL. SCALE: X		
REV#	DATE	DESCRIPTION	REVISIONS	BY
R2	2022/07/28	ISSUED FOR TENDER		BH
R1	2022/06/17	ISSUED FOR 90% REVIEW		BH
R0	2022/05/03	ISSUED FOR 60% REVIEW		BH

Engineers and Geoscientists BC  
Permit to Practice #1000200

CITY OF DUNCAN  
200 CRAIG STREET  
DUNCAN, BC  
V9L 3Y2

CITY OF DUNCAN  
BEECH AVE RENEWAL PROJECT  
COVER SHEET AND GENERAL NOTES

FILE NUMBER:  
SHEET: 1 OF 4  
REVISION NO. R2  
DRAWING: G00  
DWG FILE:

DESIGNED BY: BH APPROVED BY: FM SCALE  
DRAWN BY: SG DESIGN START DATE: 2022/03 HZ. SCALE: X  
CHECKED BY: JCS CURRENT DATE: 2022/07 VL. SCALE: X

REV# DATE DESCRIPTION REVISIONS BY  
R2 2022/07/28 ISSUED FOR TENDER BH  
R1 2022/06/17 ISSUED FOR 90% REVIEW BH  
R0 2022/05/03 ISSUED FOR 60% REVIEW BH

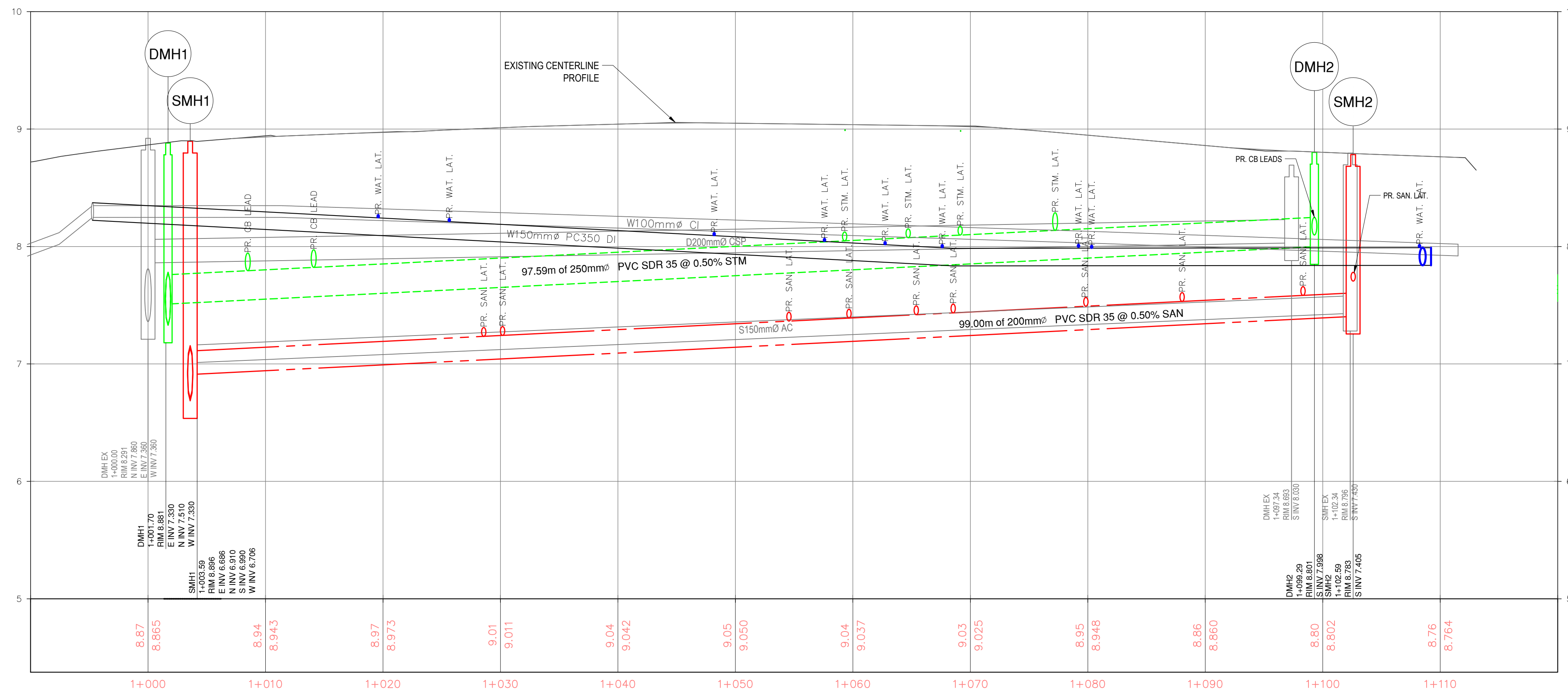
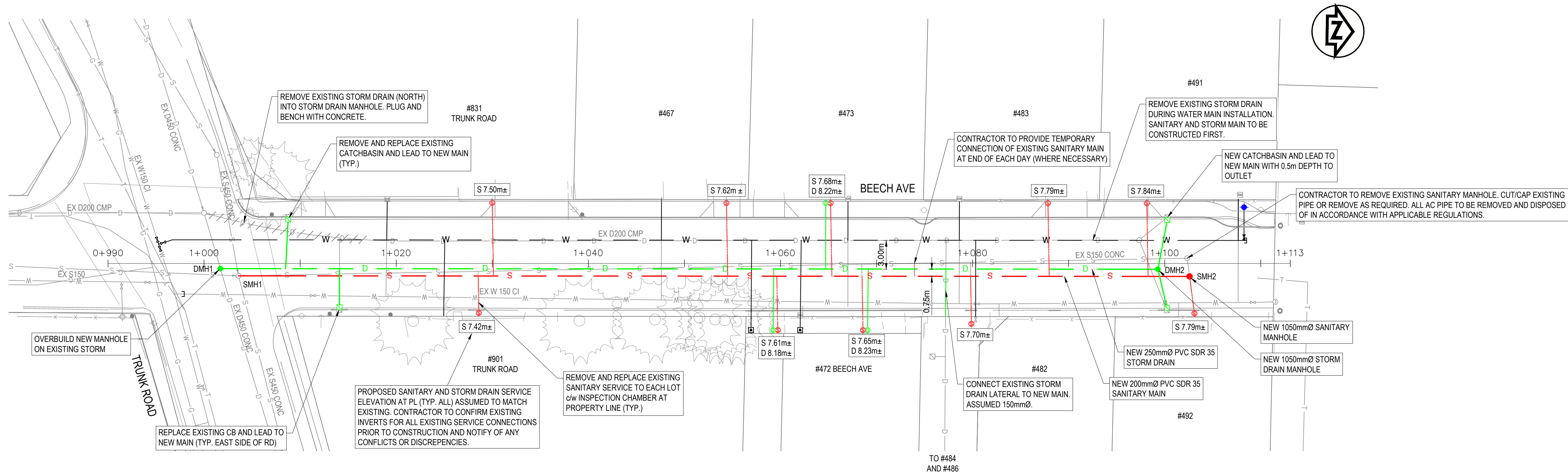
Engineers and Geoscientists BC  
Permit to Practice #1000200

CITY OF DUNCAN  
200 CRAIG STREET  
DUNCAN, BC  
V9L 3Y2

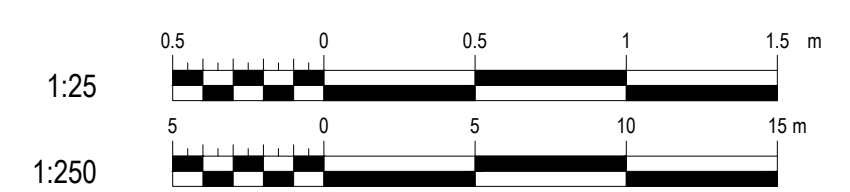
CITY OF DUNCAN  
BEECH AVE RENEWAL PROJECT  
COVER SHEET AND GENERAL NOTES

FILE NUMBER:  
SHEET: 1 OF 4  
REVISION NO. R2  
DRAWING: G00  
DWG FILE:





Engineers and Geoscientists BC  
Permit to Practice #1000200



LEGEND	PROPOSED	EXISTING
WATERMAIN	Blue line with arrows	Black line with arrows
WATER SERVICE	Blue line	Black line
WATER VALVE	Blue symbol	Black symbol
WATERMAIN REDUCER	Blue symbol	Black symbol
WATERMAIN COUPLER	Blue symbol	Black symbol
FIRE HYDRANT	Blue symbol	Black symbol
ARV	Blue symbol	Black symbol
WATERMAIN BLOW OFF	Blue symbol	Black symbol
WATERMAIN CAP	Blue symbol	Black symbol
WATERMAIN LINE BREAK	Blue symbol	Black symbol
STORM MAIN	Green line with arrows	Black line with arrows
STORM CLEANOUT	Green symbol	Black symbol
STORM SERVICE	Green line	Black line
STORM MANHOLE	Green symbol	Black symbol
STORM CAP	Green symbol	Black symbol
STORM LINE BREAK	Green symbol	Black symbol
INLET/OUTLET/HEADWALL	Green symbol	Black symbol
SANITARY MAIN	Red line with arrows	Black line with arrows
SANITARY CLEANOUT	Red symbol	Black symbol
SANITARY SERVICE	Red line	Black line
SANITARY MANHOLE	Red symbol	Black symbol
SANITARY SERVICE	Red line	Black line
CONCRETE	Red symbol	Black symbol
GUTTER LINE	Red line	Black line
ELEVATION	Red symbol	Black symbol
GRADE	Red line	Black line
WATERMAIN METER	Blue symbol	Black symbol
WATER SERVICE	Blue line	Black line
WATER VALVE	Blue symbol	Black symbol
WATERMAIN REDUCER	Blue symbol	Black symbol
WATERMAIN COUPLER	Blue symbol	Black symbol
GAS	Black line	Black line
ARV	Black symbol	Black symbol
BC HYDRO	Black symbol	Black symbol
CATCH BASIN	Black symbol	Black symbol
FIRE HYDRANT	Black symbol	Black symbol
SANITARY MAIN	Black line	Black line
SANITARY SERVICE	Black line	Black line
MANHOLE	Black symbol	Black symbol
CLEANOUT	Black symbol	Black symbol
CAP	Black symbol	Black symbol
TELUS	Black line	Black line
LINE BREAK	Black symbol	Black symbol
FENCE	Black symbol	Black symbol
UTILITY POLE AND ANCHOR	Black symbol	Black symbol
SIGN	Black symbol	Black symbol
GUTTER LINE	Black line	Black line
WATER COURSE	Black line	Black line
SCALE OF LEGEND: NTS		

DESIGNED BY:	BH	APPROVED BY:	FM
DRAWN BY:	SG	DESIGN START DATE:	2022/03
CHECKED BY:	JCS	CURRENT DATE:	2022/07
SCALE		SCALE	
H: SCALE: 1:250		V: SCALE: 1:25	
REV#	DATE	DESCRIPTION	BY
R2	2022/07/28	ISSUED FOR TENDER	BH
R1	2022/06/17	ISSUED FOR 90% REVIEW	BH
R0	2022/05/03	ISSUED FOR 60% REVIEW	BH

**CITY OF DUNCAN**  
200 CRAIG STREET  
DUNCAN, BC  
V9L 3Y2

CITY OF DUNCAN	
BEECH AVE RENEWAL PROJECT	
SANITARY AND STORM DRAIN PLAN PROFILE	
FILE NUMBER:	
SHEET:	2 OF 4
REVISION NO.	R2
DRAWING:	C01
DWG FILE:	

CONTRACTOR TO HYDROVAC WATER TIE-IN LOCATION PRIOR TO CONSTRUCTION FOR CONFIRMATION OF EXISTING TEL AND GAS MAIN LOCATIONS. FORTIS AND TELUS TO BE NOTIFIED PRIOR TO CONSTRUCTION AND STAND-BY SHOULD RELOCATION BE REQUIRED.

NEW TEE c/w THRUST BLOCK  
 • 2-1500 COUPLINGS  
 • 1-1500x1500 FLxFLxFL TEE  
 • 2-1500 MlxFL GATE VALVES (E & W)  
 • 1-1500 FLxH GATE VALVE (N)

CUT AND CAP EXISTING WATER AT MAIN c/w THRUST BLOCK. ABANDON MAIN IN PLACE.

RESTRAIN ALL JOINTS WITHIN 19m OF TEE

NEW 19mm WATER SERVICE (TYP. ALL LOTS). CONNECT TO EXISTING METER SETTER ONCE NEW MAIN IS IN SERVICE.

CONTRACTOR TO REMOVE EXISTING STORM MAIN.

CONTRACTOR TO CONFIRM LOCATION OF EXISTING METER WHERE NO METER IS SHOWN.

NEW 150mmØ DUCTILE IRON WATER MAIN

NEW HYDRANT TO DETAIL MMCD W4 (SEE SHEET C03)

CONTRACTOR TO CONFIRM IF WATER METER IS CONNECTED TO MAIN BEING REPLACED. IF SO, REPLACE SERVICE AS REQUIRED.

BLIND FLANGE TEE AT END OF LINE.

REMOVE LID AND FRAME AND FILL WITH CONCRETE

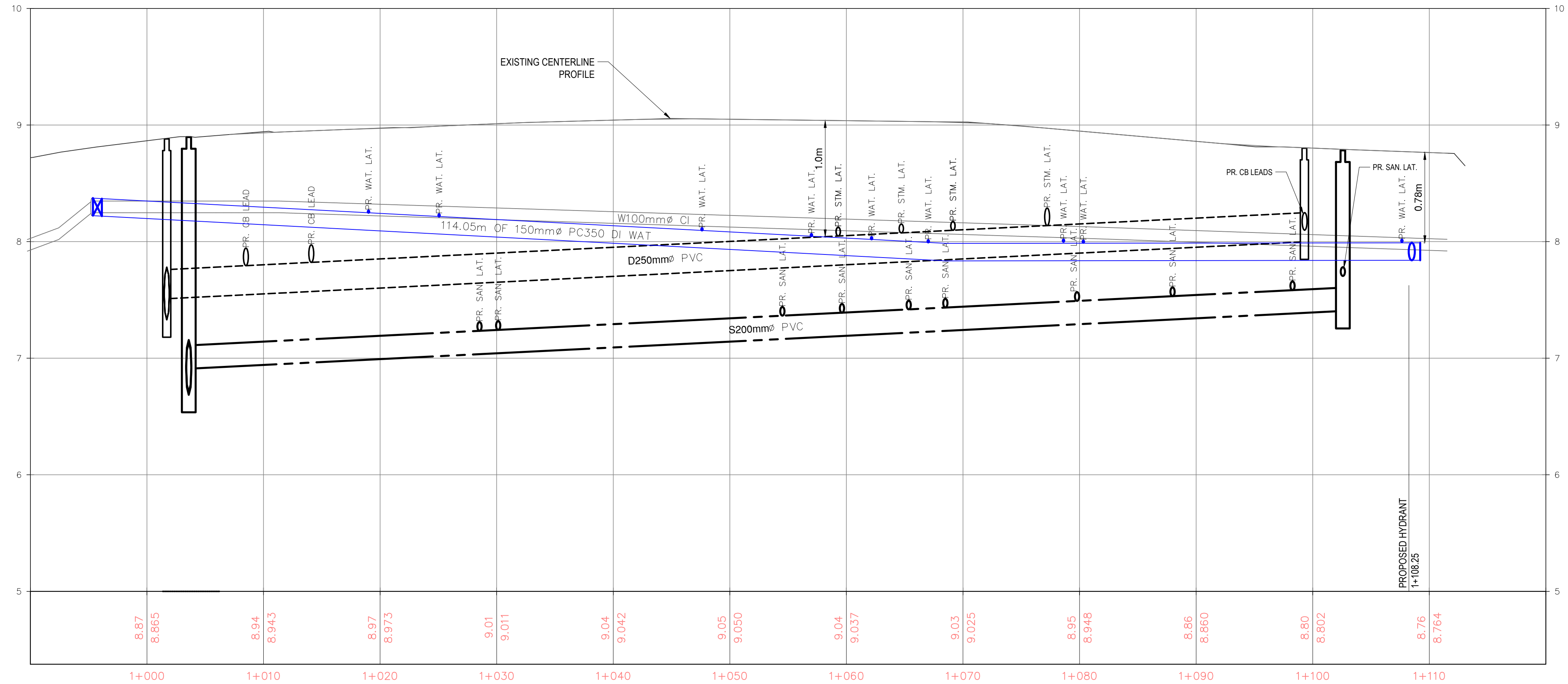
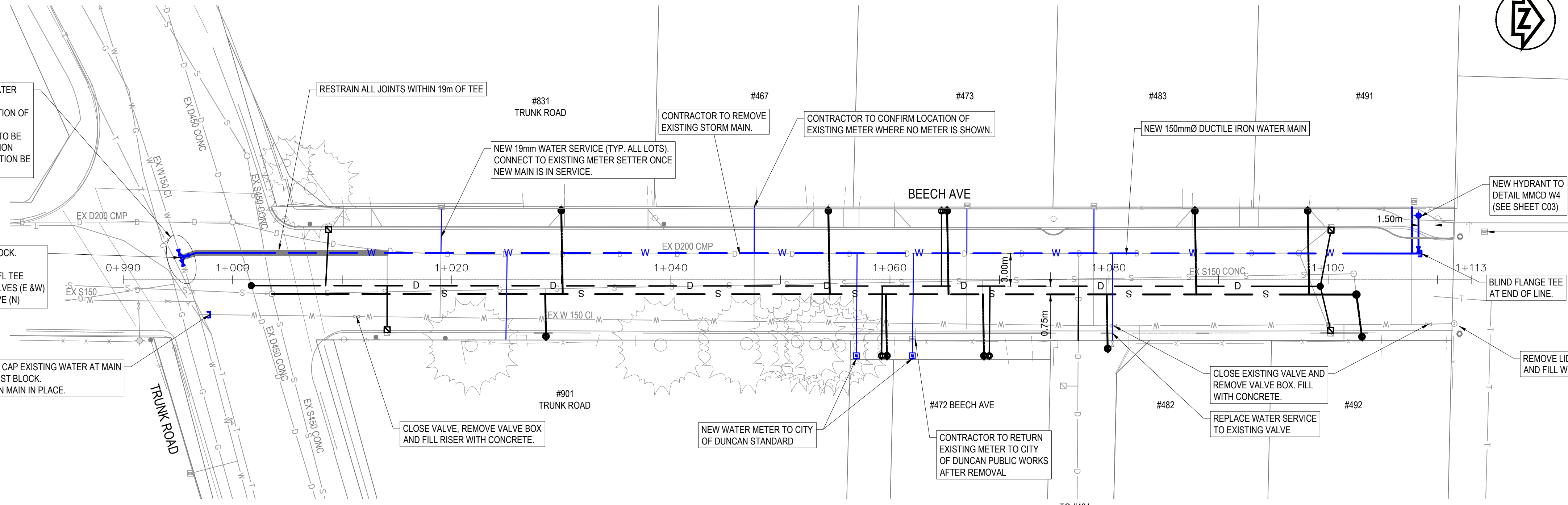
CLOSE VALVE, REMOVE VALVE BOX AND FILL RISER WITH CONCRETE.

NEW WATER METER TO CITY OF DUNCAN STANDARD

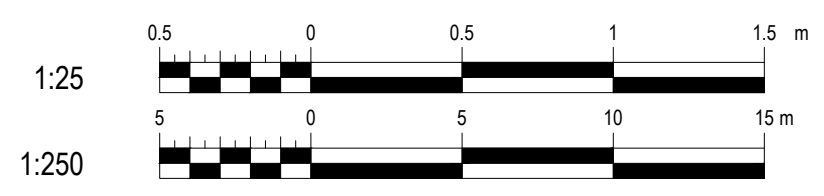
CONTRACTOR TO RETURN EXISTING METER TO CITY OF DUNCAN PUBLIC WORKS AFTER REMOVAL

CLOSE EXISTING VALVE AND REMOVE VALVE BOX. FILL WITH CONCRETE.

REPLACE WATER SERVICE TO EXISTING VALVE



Engineers and Geoscientists BC  
 Permit to Practice #1000200



LEGEND		PROPOSED		EXISTING	
WATERMAIN	WATERMAIN BLOW OFF	STORM MANHOLE	SANITARY LINE BREAK	WATERMAIN	ARV
WATER SERVICE	WATERMAIN CAP	STORM CAP	SANITARY MANHOLE	WATER SERVICE	FIRE HYDRANT
WATER VALVE	WATERMAIN LINE BREAK	STORM LINE BREAK	SANITARY SERVICE	WATER SERVICE	SANITARY MAIN
WATERMAIN REDUCER	STORM MAIN	INLET/OUTLET/HEADWALL	CONCRETE	WATER VALVE	STORM MAIN
WATERMAIN COUPLER	STORM CLEANOUT	SANITARY MAIN	GUTTER LINE	WATERMAIN REDUCER	STORM SERVICE
FIRE HYDRANT	STORM SERVICE	SANITARY CLEANOUT	ELEVATION	WATERMAIN COUPLER	INLET/OUTLET/HEADWALL
ARV	CATCH BASIN	SANITARY CAP	GRADE	GAS	BC HYDRO
					TELUS

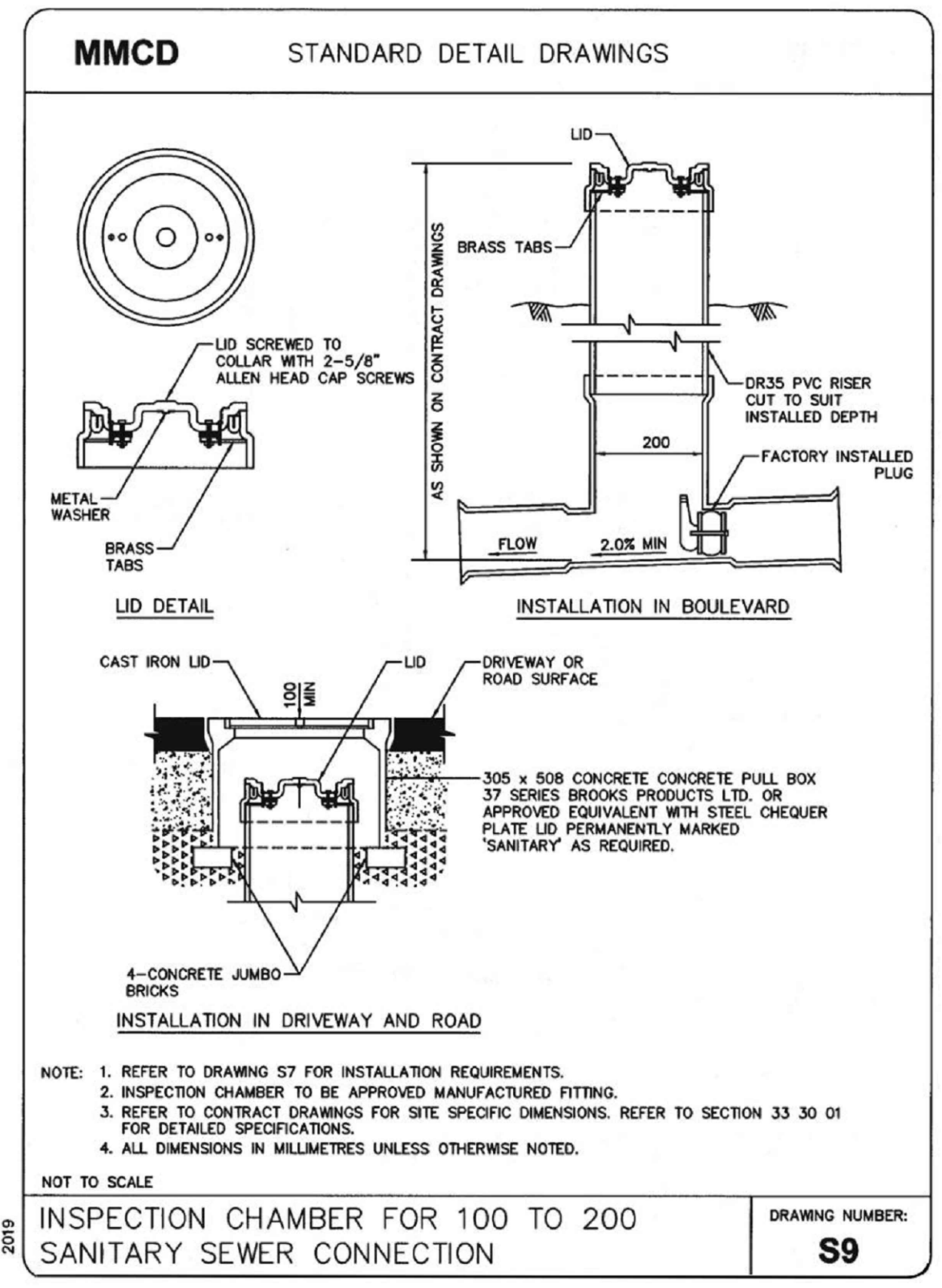
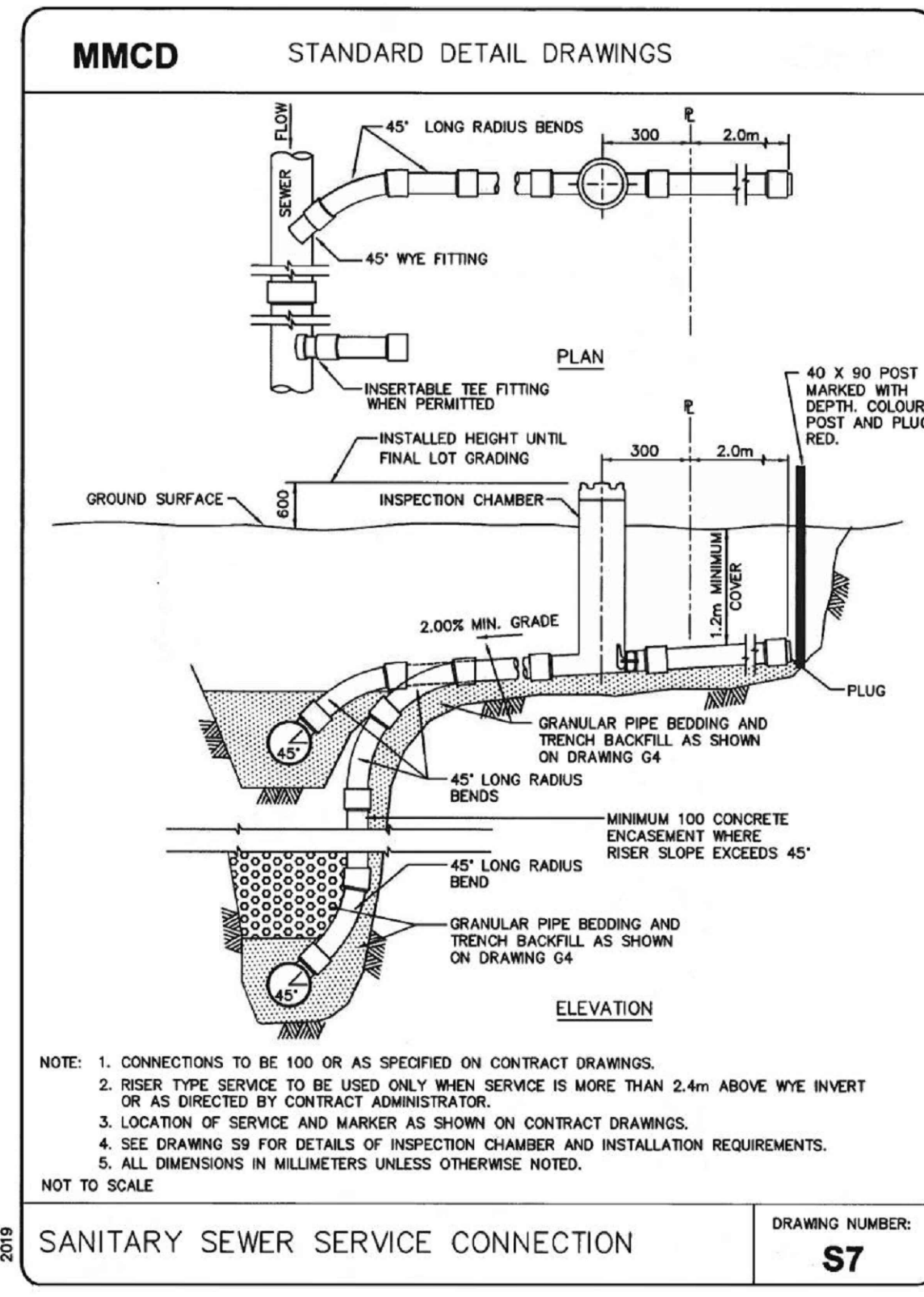
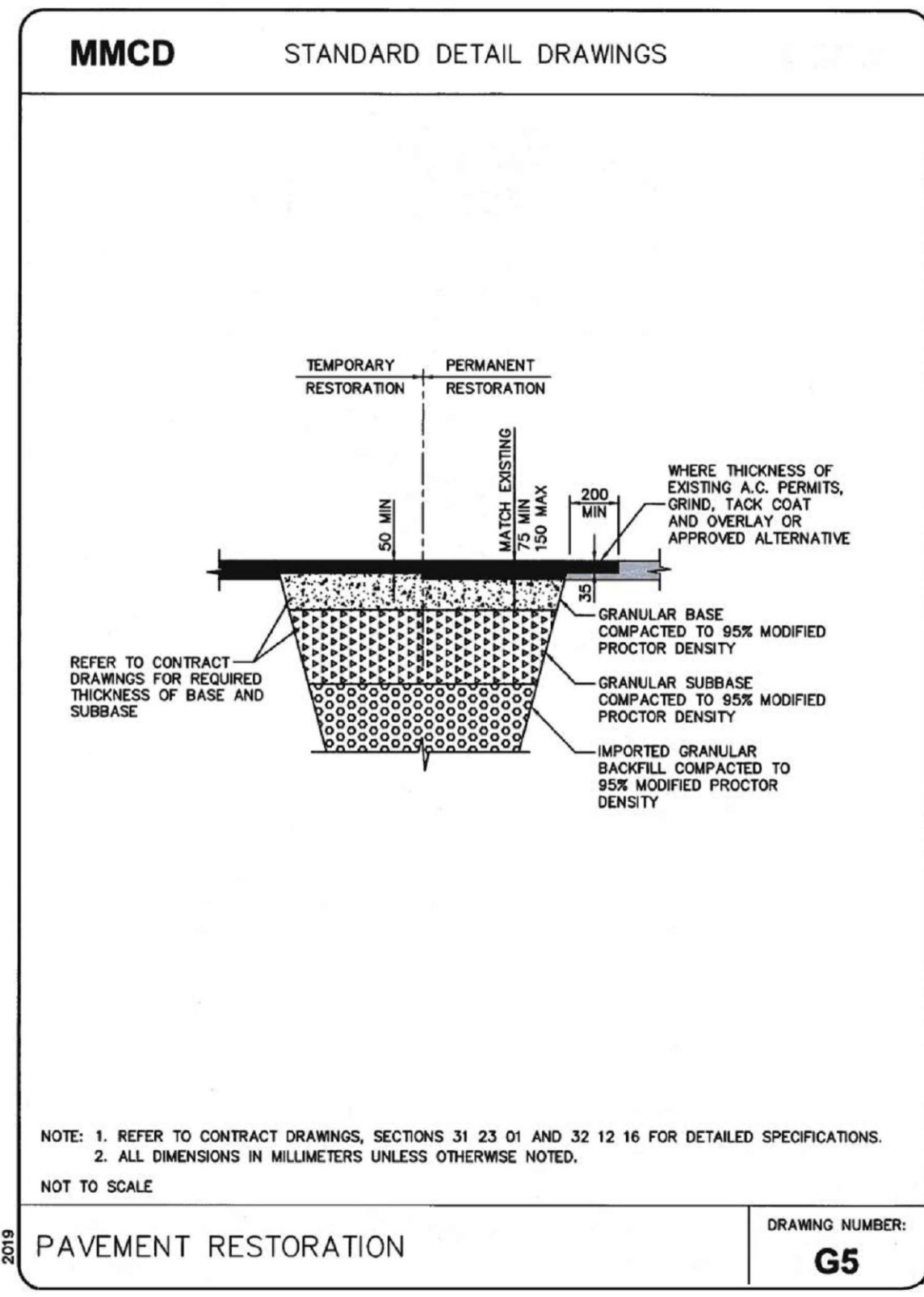
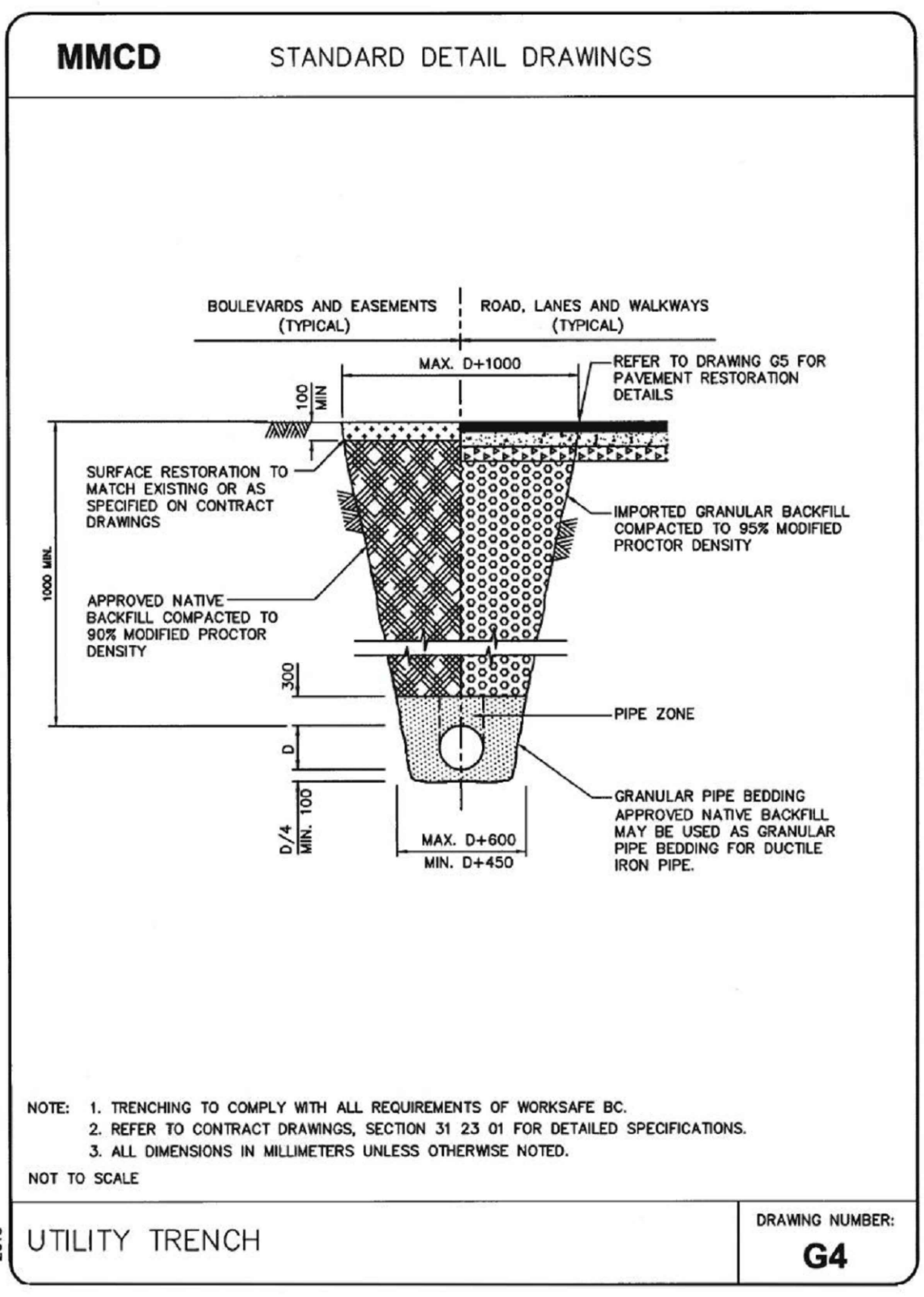
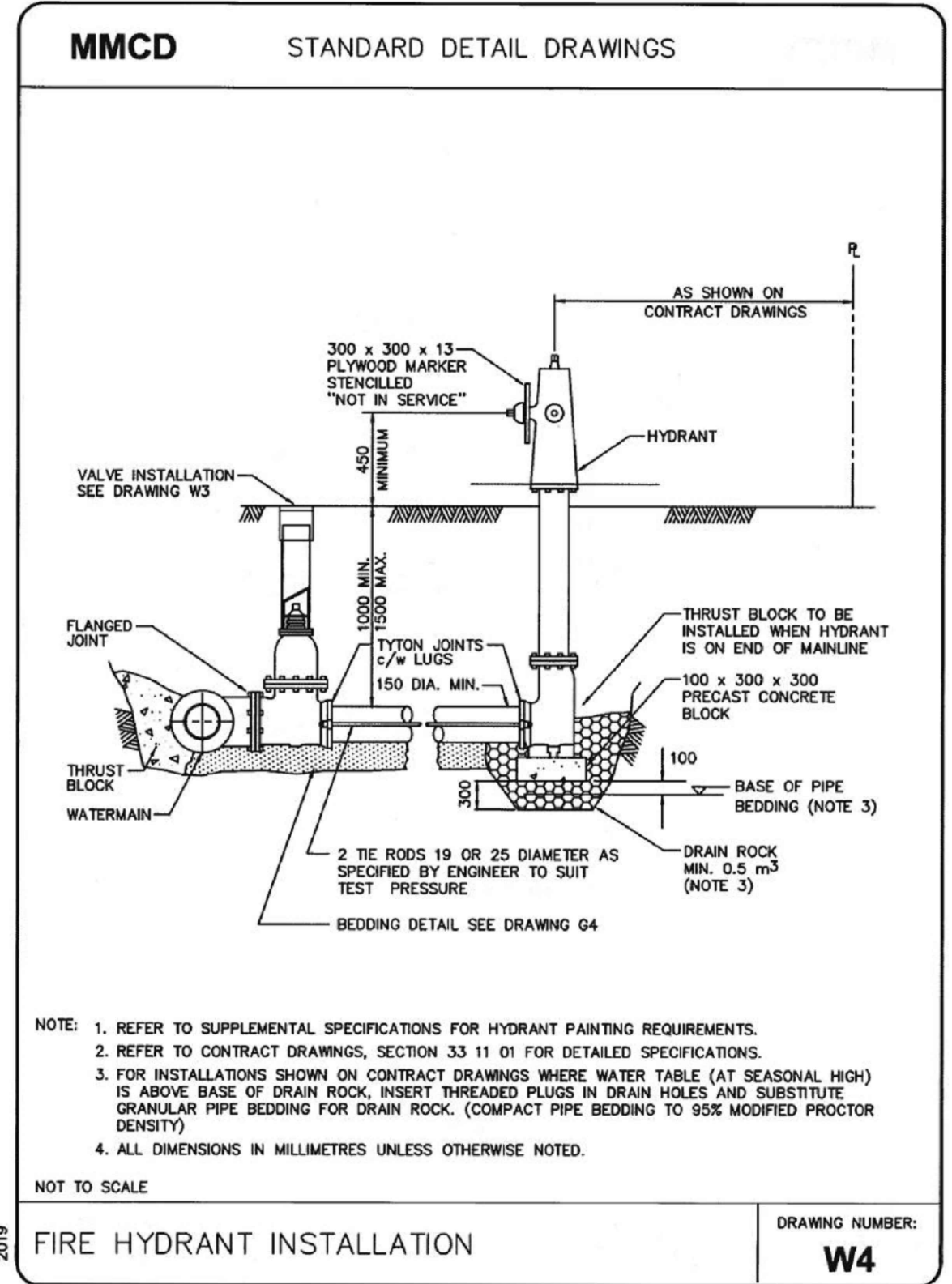
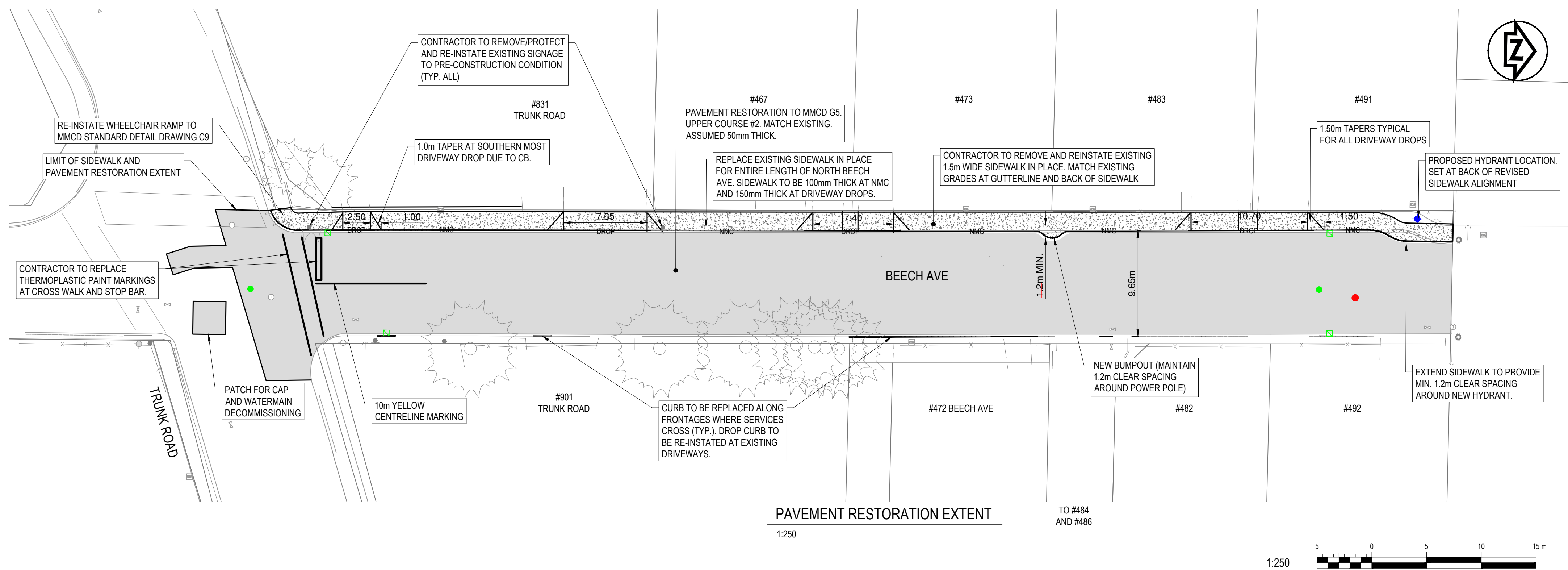
DESIGNED BY:	BH	APPROVED BY:	FM
DRAWN BY:	SG	DESIGN START DATE:	2022/03
CHECKED BY:	JCS	CURRENT DATE:	2022/07
SCALE		SCALE	
Hr. SCALE: 1:250		Vt. SCALE: 1:25	
REV#	DATE	DESCRIPTION	BY
R2	2022/07/28	ISSUED FOR TENDER	BH
R1	2022/06/17	ISSUED FOR 90% REVIEW	BH
R0	2022/05/03	ISSUED FOR 60% REVIEW	BH

**CITY OF DUNCAN**  
 200 CRAIG STREET  
 DUNCAN, BC  
 V9L 3Y2

CITY OF DUNCAN	
BEECH AVE RENEWAL PROJECT	
WATER MAIN PLAN PROFILE	

FILE NUMBER:	
SHEET:	3 OF 4
REVISION NO.	R2
DRAWING:	C02
DWG FILE:	





Engineers and Geoscientists BC  
 Permit to Practice #1000200

LEGEND	PROPOSED				EXISTING			
	WATERMAIN	WATER SERVICE	STORM SERVICE	STORM MANHOLE	WATERMAIN	WATER SERVICE	STORM SERVICE	STORM MANHOLE
Watermain Blow Off	Watermain Cap	Watermain Line Break	Watermain Reducer	Watermain Coupler	Fire Hydrant	Sanitary Service	Sanitary Manhole	Sanitary Cap
Watermain Valve	Watermain Line Break	Watermain Reducer	Watermain Coupler	Fire Hydrant	Sanitary Service	Sanitary Manhole	Sanitary Cap	Sanitary Cap
Watermain Reducer	Watermain Coupler	Fire Hydrant	Sanitary Service	Sanitary Manhole	Sanitary Cap	Sanitary Cap	Sanitary Cap	Sanitary Cap
Watermain Coupler	Fire Hydrant	Sanitary Service	Sanitary Manhole	Sanitary Cap	Sanitary Cap	Sanitary Cap	Sanitary Cap	Sanitary Cap
Fire Hydrant	Sanitary Service	Sanitary Manhole	Sanitary Cap	Sanitary Cap	Sanitary Cap	Sanitary Cap	Sanitary Cap	Sanitary Cap
ARV	Catch Basin	Sanitary Cap	Sanitary Cap	Sanitary Cap	Sanitary Cap	Sanitary Cap	Sanitary Cap	Sanitary Cap

DESIGNED BY:	APPROVED BY:	SCALE:
BH	FM	Hz. SCALE: 1:250
SG	2022/03	VL. SCALE: 1:25
JCS	2022/07	

REV#	DATE	DESCRIPTION	BY
R2	2022/07/28	ISSUED FOR TENDER	BH
R1	2022/06/17	ISSUED FOR 90% REVIEW	BH
R0	2022/05/03	ISSUED FOR 60% REVIEW	BH

**CITY OF DUNCAN**  
 200 CRAIG STREET  
 DUNCAN, BC  
 V9L 3Y2

CITY OF DUNCAN	FILE NUMBER:
BEECH AVE RENEWAL PROJECT	4 OF 4
SURFACE WORKS AND DETAILS	REVISION NO. R2
	DRAWING: C03
	DWG FILE:

CITY OF DUNCAN	FILE NUMBER:
BEECH AVE RENEWAL PROJECT	4 OF 4
SURFACE WORKS AND DETAILS	REVISION NO. R2
	DRAWING: C03
	DWG FILE:

ben.harms - Jul 28, 2022 - 11:16am [\\corporate\home\ben\CA0500\CA0500\040101\Net\Projects\2022\221-01539-00\Beech\_Avenue\_Renewal\4-602.dwg] D:\E\ProfServices\14-602.dwg\3 - DNE\Production\221-01539-00-SheetLayout.dwg - C03